

For Research Use Only

GINS1 Recombinant antibody, PBS Only (Detector)

Catalog Number: 83293-1-PBS



Basic Information

| | | |
|--|---|---|
| Catalog Number: 83293-1-PBS | GenBank Accession Number: BC012542 | Purification Method: Protein A purification |
| Size: 100ug, Concentration: 1mg/ml by Nanodrop; | GeneID (NCBI): 9837 | CloneNo.: 240234A2 |
| Source: Rabbit | UNIPROT ID: Q14691 | |
| Isotype: IgG | Full Name: GINS complex subunit 1 (Psf1 homolog) | |
| Immunogen Catalog Number: AG8895 | Calculated MW: 196 aa, 23 kDa | |

Applications

Tested Applications:
WB, Cytometric bead array, Indirect ELISA

Species Specificity:
human

Product Information

83293-1-PBS targets GINS1 as part of a matched antibody pair:

MP00317-2: 83293-2-PBS capture and 83293-1-PBS detection (validated in Cytometric bead array)

Unconjugated rabbit recombinant monoclonal antibody in PBS only (BSA and azide free) storage buffer at a concentration of 1 mg/mL, ready for conjugation. Created using Proteintech's proprietary in-house recombinant technology. Recombinant production enables unrivalled batch-to-batch consistency, easy scale-up, and future security of supply.

This conjugation ready format makes antibodies ideal for use in many applications including: ELISAs, multiplex assays requiring matched pairs, mass cytometry, and multiplex imaging applications. Antibody use should be optimized by the end user for each application and assay.

Storage

Storage:
Store at -80°C.

Storage Buffer:
PBS Only

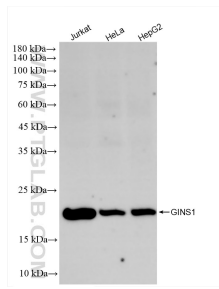
For technical support and original validation data for this product please contact:

T: 1 (888) 4PTGLAB (1-888-478-4522) (toll free
in USA), or 1(312) 455-8498 (outside USA)

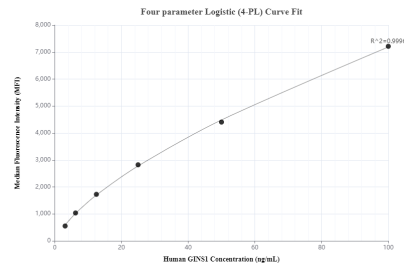
E: proteintech@ptglab.com
W: ptglab.com

This product is exclusively available under Proteintech Group brand and is not available to purchase from any other manufacturer.

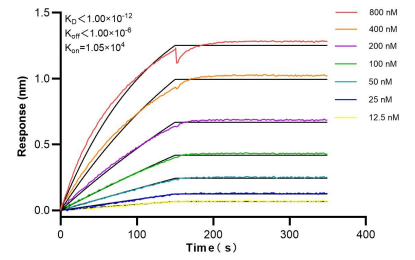
Selected Validation Data



Various lysates were subjected to SDS PAGE followed by western blot with 83293-1-RR (GINS1 antibody) at dilution of 1:10000 incubated at room temperature for 1.5 hours. This data was developed using the same antibody clone with 83293-1-PBS in a different storage buffer formulation.



Cytometric bead array standard curve of MP00317-2, GINS1 Recombinant Matched Antibody Pair, PBS Only. Capture antibody: 83293-2-PBS. Detection antibody: 83293-1-PBS. Standard: Ag8895. Range: 3.13-100 ng/mL.



Bi-layer interferometry (BLI) kinetic assays of 83293-1-RR against Human GINS1 were performed. The affinity constant is below 1 pM.