

For Research Use Only

# gp130/IL6ST Recombinant antibody, PBS Only (Detector)

Catalog Number: 83284-4-PBS



## Basic Information

<b>Catalog Number:</b> 83284-4-PBS	<b>GenBank Accession Number:</b> NM_002184.3	<b>Purification Method:</b> Protein A purification
<b>Size:</b> 100ug , Concentration: 1 mg/ml by Nanodrop;	<b>GeneID (NCBI):</b> 3572	<b>CloneNo.:</b> 240992A5
<b>Source:</b> Rabbit	<b>UNIPROT ID:</b> P40189-1	
<b>Isotype:</b> IgG	<b>Full Name:</b> interleukin 6 signal transducer (gp130, oncostatin M receptor)	
	<b>Calculated MW:</b> 104 kDa	

## Applications

**Tested Applications:**  
Sandwich ELISA, Indirect ELISA, Sample test

**Species Specificity:**  
human

## Product Information

83284-4-PBS targets gp130/IL6ST as part of a matched antibody pair:

MP00324-3: 83284-7-PBS capture and 83284-4-PBS detection (validated in Sandwich ELISA)

Unconjugated rabbit recombinant monoclonal antibody in PBS only (BSA and azide free) storage buffer at a concentration of 1 mg/mL, ready for conjugation. Created using Proteintech's proprietary in-house recombinant technology. Recombinant production enables unrivalled batch-to-batch consistency, easy scale-up, and future security of supply.

This conjugation ready format makes antibodies ideal for use in many applications including: ELISAs, multiplex assays requiring matched pairs, mass cytometry, and multiplex imaging applications. Antibody use should be optimized by the end user for each application and assay.

## Storage

**Storage:**  
Store at -80°C.  
**Storage Buffer:**  
PBS Only

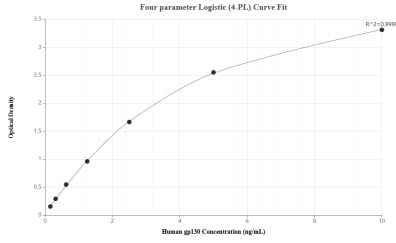
For technical support and original validation data for this product please contact:

T: 1 (888) 4PTGLAB (1-888-478-4522) (toll free  
in USA), or 1(312) 455-8498 (outside USA)

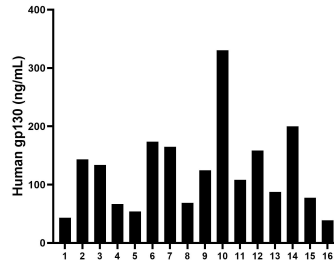
E: [proteintech@ptglab.com](mailto:proteintech@ptglab.com)  
W: [ptglab.com](http://ptglab.com)

**This product is exclusively available under Proteintech Group brand and is not available to purchase from any other manufacturer.**

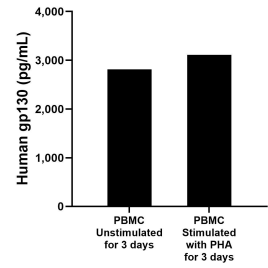
## Selected Validation Data



Sandwich ELISA standard curve of MP00324-3, Human gp130 Recombinant Matched Antibody Pair - PBS only. 83284-7-PBS was coated to a plate as the capture antibody and incubated with serial dilutions of standard Eg0024. 83284-4-PBS was HRP conjugated as the detection antibody. Range: 0.156-10 ng/mL



Serum of sixteen individual healthy human donors was measured. The human gp130 concentration of detected samples was determined to be 123.3 ng/mL with a range of 38.7 - 330.5 ng/mL.



Human peripheral blood mononuclear cells (PBMC) ( $1 \times 10^6$  cells/mL) were cultured in DMEM supplemented with 8% fetal bovine serum,  $5 \mu\text{M}$   $\beta$ -mercaptoethanol, 2 mM L-glutamine, 100 U/mL penicillin, and 100  $\mu\text{g}/\text{mL}$  streptomycin sulfate. Cells were cultured unstimulated or stimulated with 10  $\mu\text{g}/\text{mL}$  PHA for 3 days. Aliquots of the cell culture supernates were removed and assayed for levels of human gp130.