

For Research Use Only

IGFBP2 Recombinant antibody, PBS Only (Capture)



Catalog Number: 83283-3-PBS

Basic Information

Catalog Number: 83283-3-PBS	GenBank Accession Number: NM_000597.3	Purification Method: Protein A purification
Size: 100ug, Concentration: 1 mg/ml by Nanodrop;	GeneID (NCBI): 3485	CloneNo.: 240227D4
Source: Rabbit	UNIPROT ID: P18065	
Isotype: IgG	Full Name: IGF binding protein 2	
	Calculated MW: 35 kDa	

Applications

Tested Applications:
WB, Sandwich ELISA, Indirect ELISA, Sample test

Species Specificity:
human

Product Information

83283-3-PBS targets IGFBP2 as part of a matched antibody pair:

MP00322-2: 83283-3-PBS capture and 83283-2-PBS detection (validated in Sandwich ELISA)

Unconjugated rabbit recombinant monoclonal antibody in PBS only (BSA and azide free) storage buffer at a concentration of 1 mg/mL, ready for conjugation. Created using Proteintech's proprietary in-house recombinant technology. Recombinant production enables unrivalled batch-to-batch consistency, easy scale-up, and future security of supply.

This conjugation ready format makes antibodies ideal for use in many applications including: ELISAs, multiplex assays requiring matched pairs, mass cytometry, and multiplex imaging applications. Antibody use should be optimized by the end user for each application and assay.

Storage

Storage:
Store at -80°C.

Storage Buffer:
PBS Only

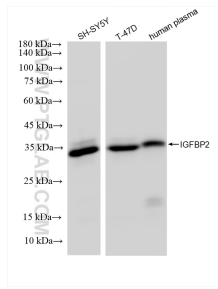
For technical support and original validation data for this product please contact:

T: 1 (888) 4PTGLAB (1-888-478-4522) (toll free in USA), or 1(312) 455-8498 (outside USA)

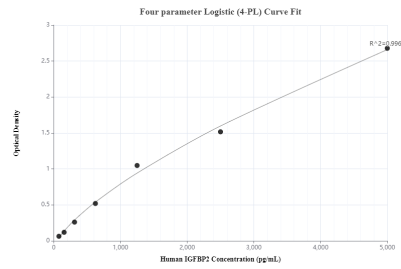
E: proteintech@ptglab.com
W: ptglab.com

This product is exclusively available under Proteintech Group brand and is not available to purchase from any other manufacturer.

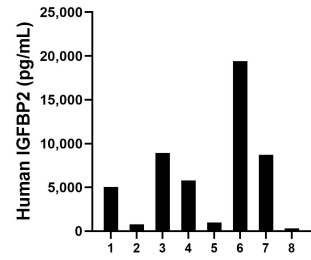
Selected Validation Data



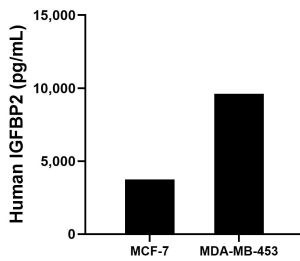
Various lysates were subjected to SDS PAGE followed by western blot with 83283-3-RR (IGFBP2 antibody) at dilution of 1:10000 incubated at room temperature for 1.5 hours. This data was developed using the same antibody clone with 83283-3-PBS in a different storage buffer formulation.



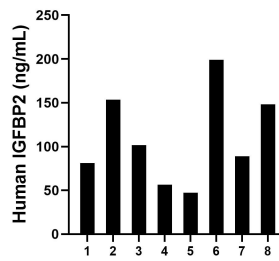
Sandwich ELISA standard curve of MP00322-2, human IGFBP2 Recombinant Matched Antibody Pair - PBS only. 83283-3-PBS was coated to a plate as the capture antibody and incubated with serial dilutions of standard Eg0823. 83283-2-PBS was HRP conjugated as the detection antibody. Range: 78.1-5000 pg/mL.



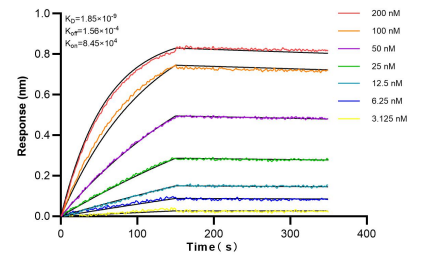
Urine of eight individual healthy human donors was measured. The IGFBP2 concentration of detected samples was determined to be 6251.0 pg/mL with a range of 306.2 - 19423.8 pg/mL.



MCF-7 human breast cancer cells (5×10^6 cells/mL) were cultured in DMEM and 10% fetal bovine serum, 4 mM L-glutamine, 4500 mg/L glucose, 100 U/mL penicillin, and 100 µg/mL streptomycin sulfate. An aliquot of the cell culture supernatants was removed, assayed for human IGFBP2, and measured 3750.9 pg/mL. MDA-MB-453 human breast carcinoma cells (5×10^6 cells/mL) were cultured in DMEM supplemented with 10% fetal bovine serum, 2.5 mM L-glutamine, 100



Serum of eight individual healthy human donors was measured. The IGFBP2 concentration of detected samples was determined to be 109.5 ng/mL with a range of 47.4 - 199.1 ng/mL.



Bi-layer interferometry (BLI) kinetic assays of 83283-3-RR against Human IGFBP2 were performed. The affinity constant is 1.85 nM.