

For Research Use Only

IGFBP2 Recombinant antibody, PBS Only (Capture/Detector)



Catalog Number: 83283-2-PBS

Basic Information

Catalog Number: 83283-2-PBS	GenBank Accession Number: NM_000597.3	Purification Method: Protein A purification
Size: 100ug , Concentration: 1mg/ml by Nanodrop;	GeneID (NCBI): 3485	CloneNo.: 240227G3
Source: Rabbit	UNIPROT ID: P18065	
Isotype: IgG	Full Name: IGF binding protein 2	
	Calculated MW: 35 kDa	

Applications

Tested Applications:
Cytometric bead array, Sandwich ELISA, Indirect ELISA, Sample test

Species Specificity:
human

Product Information

83283-2-PBS targets IGFBP2 as part of a matched antibody pair:

MP00322-1: 83283-2-PBS capture and 83283-1-PBS detection (validated in Cytometric bead array)

MP00322-2: 83283-3-PBS capture and 83283-2-PBS detection (validated in Sandwich ELISA)

Unconjugated rabbit recombinant monoclonal antibody in PBS only (BSA and azide free) storage buffer at a concentration of 1 mg/mL, ready for conjugation. Created using Proteintech's proprietary in-house recombinant technology. Recombinant production enables unrivalled batch-to-batch consistency, easy scale-up, and future security of supply.

This conjugation ready format makes antibodies ideal for use in many applications including: ELISAs, multiplex assays requiring matched pairs, mass cytometry, and multiplex imaging applications. Antibody use should be optimized by the end user for each application and assay.

Storage

Storage:
Store at -80°C.
Storage Buffer:
PBS Only

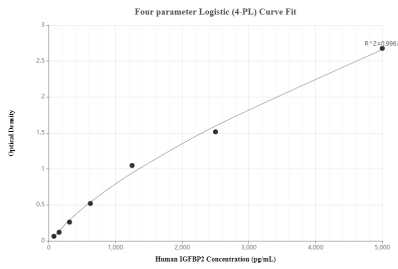
For technical support and original validation data for this product please contact:

T: 1 (888) 4PTGLAB (1-888-478-4522) (toll free in USA), or 1(312) 455-8498 (outside USA)

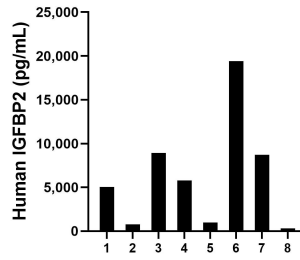
E: proteintech@ptglab.com
W: ptglab.com

This product is exclusively available under Proteintech Group brand and is not available to purchase from any other manufacturer.

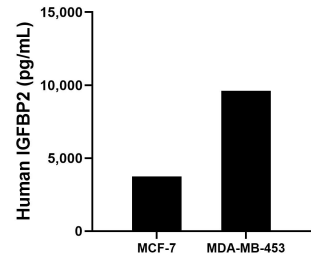
Selected Validation Data



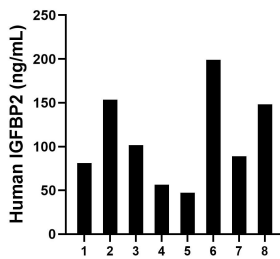
Sandwich ELISA standard curve of MP00322-2, human IGFBP2 Recombinant Matched Antibody Pair - PBS only. 83283-3-PBS was coated to a plate as the capture antibody and incubated with serial dilutions of standard Eg0823. 83283-2-PBS was HRP conjugated as the detection antibody. Range: 78.1-5000 pg/mL



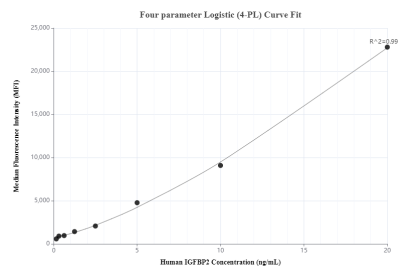
Urine of eight individual healthy human donors was measured. The IGFBP2 concentration of detected samples was determined to be 6251.0 pg/mL with a range of 306.2 - 19423.8 pg/mL



MCF-7 human breast cancer cells (5×10^6 cells/mL) were cultured in DMEM and 10% fetal bovine serum, 4 mM L-glutamine, 4500 mg/L glucose, 100 U/mL penicillin, and 100 µg/mL streptomycin sulfate. An aliquot of the cell culture supernatant was removed, assayed for human IGFBP2, and measured 3750.9 pg/mL. MDA-MB-453 human breast carcinoma cells (5×10^6 cells/mL) were cultured in DMEM supplemented with 10% fetal bovine serum, 2.5 mM L-glutamine, 100



Serum of eight individual healthy human donors was measured. The IGFBP2 concentration of detected samples was determined to be 109.5 ng/mL with a range of 47.4 - 199.1 ng/mL



Cytometric bead array standard curve of MP00322-1, IGFBP2 Recombinant Matched Antibody Pair, PBS Only. Capture antibody: 83283-2-PBS. Detection antibody: 83283-1-PBS. Standard: Eg0823. Range: 0.156-20 ng/mL