

For Research Use Only

MPO Recombinant antibody, PBS Only (Detector)

Catalog Number: 83282-5-PBS



Basic Information

Catalog Number: 83282-5-PBS	GenBank Accession Number: BC130476	Purification Method: Protein A purification
Size: 100ug, Concentration: 1 mg/ml by Nanodrop;	GeneID (NCBI): 4353	CloneNo.: 240229A6
Source: Rabbit	UNIPROT ID: P05164	
Isotype: IgG	Full Name: myeloperoxidase	
	Calculated MW: 745 aa, 84 kDa	

Applications

Tested Applications:
Sandwich ELISA, Indirect ELISA, Sample test

Species Specificity:
human

Product Information

83282-5-PBS targets MPO as part of a matched antibody pair:

MP00321-2: 83282-4-PBS capture and 83282-5-PBS detection (validated in Sandwich ELISA)

Unconjugated rabbit recombinant monoclonal antibody in PBS only (BSA and azide free) storage buffer at a concentration of 1 mg/mL, ready for conjugation. Created using Proteintech's proprietary in-house recombinant technology. Recombinant production enables unrivalled batch-to-batch consistency, easy scale-up, and future security of supply.

This conjugation ready format makes antibodies ideal for use in many applications including: ELISAs, multiplex assays requiring matched pairs, mass cytometry, and multiplex imaging applications. Antibody use should be optimized by the end user for each application and assay.

Storage

Storage:
Store at -80°C.

Storage Buffer:
PBS Only

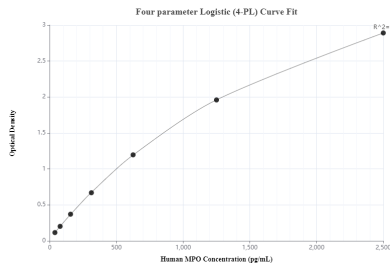
For technical support and original validation data for this product please contact:

T: 1 (888) 4PTGLAB (1-888-478-4522) (toll free in USA), or 1(312) 455-8498 (outside USA)

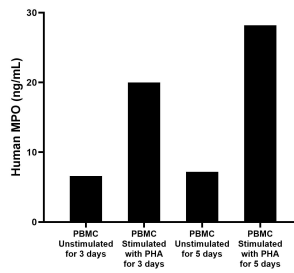
E: proteintech@ptglab.com
W: ptglab.com

This product is exclusively available under Proteintech Group brand and is not available to purchase from any other manufacturer.

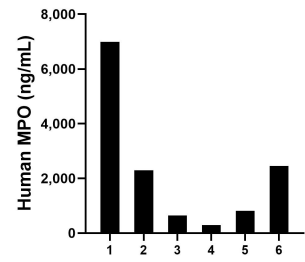
Selected Validation Data



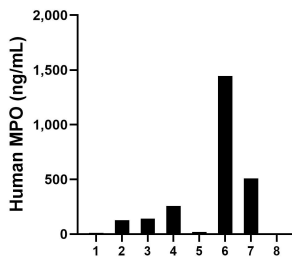
Sandwich ELISA standard curve of MP00321-2, Human MPO Recombinant Matched Antibody Pair - PBS only. 83282-4-PBS was coated to a plate as the capture antibody and incubated with serial dilutions of standard Eg0511. 83282-5-PBS was HRP conjugated as the detection antibody. Range: 39-2500 pg/mL



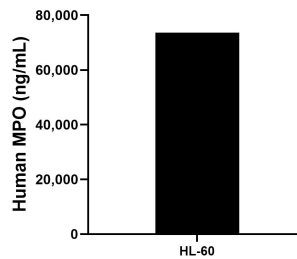
Human peripheral blood mononuclear cells (PBMC) were cultured unstimulated or stimulated with 10 µg/mL PHA for 3 days or 5 days. For the PBMC supernatant cultured for 3 days, the mean MPO concentration was determined to be 6.6 ng/mL in unstimulated PBMC supernatant, 20.0 ng/mL in PHA stimulated PBMC supernatant. For the PBMC supernatant cultured for 5 days, the mean MPO concentration was determined to be 7.2 ng/mL in unstimulated PBMC supernatant,



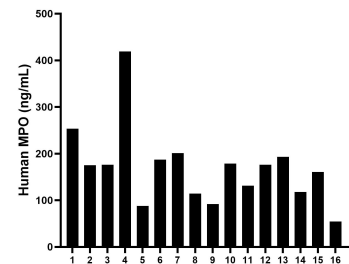
Urine of six individual healthy human donors was measured. The MPO concentration of detected samples was determined to be 2,249.9 pg/mL with a range of 294.1 - 6,991.1 pg/mL.



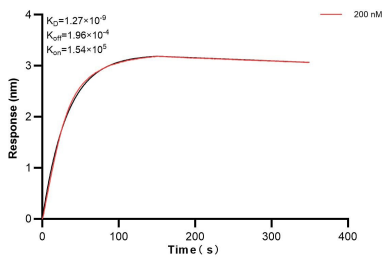
Saliva of eight individual healthy human donors was measured. The MPO concentration of detected samples was determined to be 314.7 ng/mL with a range of 6.3 - 1,446.1 ng/mL.



The mean MPO concentration was determined to be 73,583.3 ng/mL in HL-60 cell extract based on a 4.3 mg/mL extract load.



Serum of sixteen individual healthy human donors was measured. The MPO concentration of detected samples was determined to be 169.9 ng/mL with a range of 54.5 - 419.2 ng/mL.



Biolayer interferometry (BLI) kinetic assay of 83282-5-PBS against Human MPO was performed. The affinity constant is 1.27 nM.