

For Research Use Only

NOD2 Recombinant antibody, PBS Only (Detector)

Catalog Number:83281-3-PBS



Basic Information

Catalog Number: 83281-3-PBS	GenBank Accession Number: NM_001293557	Purification Method: Protein A purification
Size: 100ug , Concentration: 1mg/ml by Nanodrop;	GeneID (NCBI): 64127	CloneNo.: 230327E10
Source: Rabbit	UNIPROT ID: Q9HC29	
Isotype: IgG	Full Name: nucleotide-binding oligomerization domain containing 2	
Immunogen Catalog Number: AG33771	Calculated MW: 115 kDa	

Applications

Tested Applications:
IF/ICC, FC (Intra), Cytometric bead array, Indirect ELISA

Species Specificity:
human

Product Information

83281-3-PBS targets NOD2 as part of a matched antibody pair:

MP00320-1: 83281-1-PBS capture and 83281-3-PBS detection (validated in Cytometric bead array)

MP00320-2: 83281-4-PBS capture and 83281-3-PBS detection (validated in Cytometric bead array)

Unconjugated rabbit recombinant monoclonal antibody in PBS only (BSA and azide free) storage buffer at a concentration of 1 mg/mL, ready for conjugation. Created using Proteintech's proprietary in-house recombinant technology. Recombinant production enables unrivalled batch-to-batch consistency, easy scale-up, and future security of supply.

This conjugation ready format makes antibodies ideal for use in many applications including: ELISAs, multiplex assays requiring matched pairs, mass cytometry, and multiplex imaging applications. Antibody use should be optimized by the end user for each application and assay.

Storage

Storage:
Store at -80°C.
Storage Buffer:
PBS only

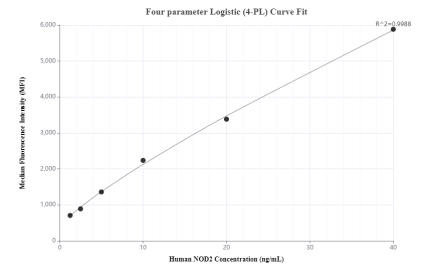
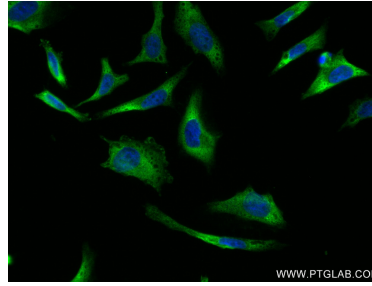
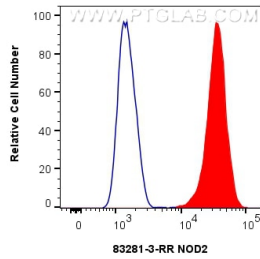
For technical support and original validation data for this product please contact:

T: 1 (888) 4PTGLAB (1-888-478-4522) (toll free in USA), or 1(312) 455-8498 (outside USA)

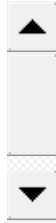
E: proteintech@ptglab.com
W: ptglab.com

This product is exclusively available under Proteintech Group brand and is not available to purchase from any other manufacturer.

Selected Validation Data

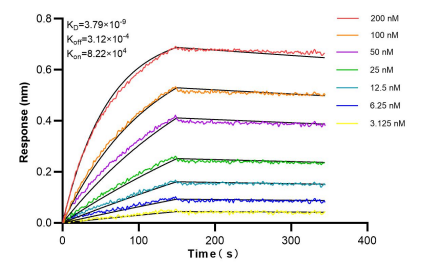
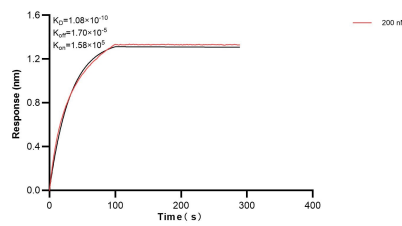
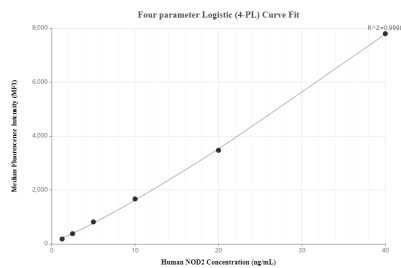


1x10⁶ Jurkat cells were intracellularly stained with 0.25 ug Nod2 Recombinant Antibody (83281-3-RR, Clone:230327E10) and CoraLite®488-Conjugated Goat Anti-Rabbit IgG(H+L) (SA00013-2) (red), or 0.25 ug Rabbit IgG Isotype Control RecAb (98136-1-RR, Clone: 240953C9) (blue). Cells were fixed with 4% PFA and permeabilized with Flow Cytometry Perm Buffer (PF00011-C). This data was developed using the same antibody clone with 83281-3-PBS in a



Immunofluorescent analysis of (4% PFA) fixed HeLa cells using NOD2 antibody (83281-3-RR, Clone: 230327E10) at dilution of 1:200 and CoraLite®488-Conjugated AffiniPure Goat Anti-Rabbit IgG(H+L) (SA00013-2). This data was developed using the same antibody clone with 83281-3-PBS in a different storage buffer formulation.

Cytometric bead array standard curve of MP00320-1, NOD2 Recombinant Matched Antibody Pair, PBS Only. Capture antibody: 83281-1-PBS. Detection antibody: 83281-3-PBS. Standard: Ag33771. Range: 1.25-40 ng/mL.



Cytometric bead array standard curve of MP00320-2, NOD2 Recombinant Matched Antibody Pair, PBS Only. Capture antibody: 83281-4-PBS. Detection antibody: 83281-3-PBS. Standard: Ag33771. Range: 1.25-40 ng/mL.

Bioluminescence resonance energy transfer (BRET) kinetic assay of 83281-3-PBS against Human NOD2 was performed. The affinity constant is 0.108 nM.

Bioluminescence resonance energy transfer (BRET) kinetic assays of 83281-3-RR against Human NOD2 were performed. The affinity constant is 3.79 nM.