

For Research Use Only

Cytochrome c Recombinant antibody, PBS Only



Catalog Number: 83276-1-PBS

Basic Information

Catalog Number: 83276-1-PBS	GenBank Accession Number: BC009578	Purification Method: Protein A purification
Size: 100ug , Concentration: 1 mg/ml by Nanodrop;	GeneID (NCBI): 54205	CloneNo.: 230503E10
Source: Rabbit	UNIPROT ID: P99999	
Isotype: IgG	Full Name: cytochrome c, somatic	
Immunogen Catalog Number: AG1455	Calculated MW: 12 kDa	

Applications

Tested Applications:
WB, FC, Indirect ELISA

Species Specificity:
Human

Storage

Storage:
Store at -80°C.
Storage Buffer:
PBS Only

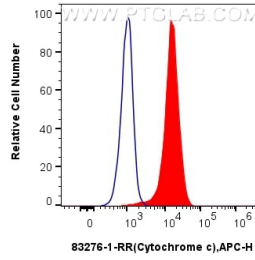
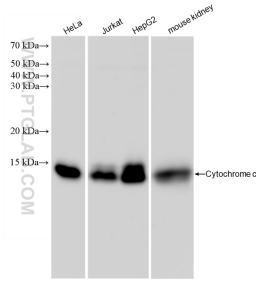
For technical support and original validation data for this product please contact:

T: 1 (888) 4PTGLAB (1-888-478-4522) (toll free
in USA), or 1(312) 455-8498 (outside USA)

E: proteintech@ptglab.com
W: ptglab.com

This product is exclusively available under Proteintech Group brand and is not available to purchase from any other manufacturer.

Selected Validation Data



Various lysates were subjected to SDS PAGE followed by western blot with 83276-1-RR (Cytochrome c antibody) at dilution of 1:10000 incubated at room temperature for 1.5 hours. This data was developed using the same antibody clone with 83276-1-PBS in a different storage buffer formulation.

1x10⁶ HeLa cells were intracellularly stained with 0.25 ug Cytochrome c Recombinant antibody (83276-1-RR, Clone:230503E10) and APC-Conjugated AffiniPure Goat Anti-Rabbit IgG(H+L)(red), or 0.25 ug Rabbit IgG control Rabbit PolyAb (30000-0-AP) (blue). Cells were fixed with 4% PFA and permeabilized with Flow Cytometry Perm Buffer (PF00011-C). This data was developed using the same antibody clone with 83276-1-PBS in a different storage buffer

