

For Research Use Only

KERA Recombinant antibody, PBS Only

Catalog Number: 83272-1-PBS



Basic Information

Catalog Number: 83272-1-PBS	GenBank Accession Number: BC032667	Purification Method: Protein A purification
Size: 100ug , Concentration: 1 mg/ml by Nanodrop;	GeneID (NCBI): 11081	CloneNo.: 230399B11
Source: Rabbit	UNIPROT ID: O60938	
Isotype: IgG	Full Name: keratocan	
Immunogen Catalog Number: AG34171	Calculated MW: 352 aa, 41 kDa	

Applications

Tested Applications:
FC (Intra), Indirect ELISA

Species Specificity:
human

Background Information

Keratocan and Lumican are the predominant class II SLRPs (Small leucine-rich proteoglycans) in the corneal stroma. While not totally corneal-specific together these SLRPs are excellent biomarkers for the tissue. Mutant mice deficient for keratocan expression have transparent but thin corneal stromas with a mild increase in collagen fibril diameter with no further abnormalities. In humans, mutations in the keratocan gene are associated with a flattened cornea in a rare condition known as cornea plana. The relative specificity of keratocan to corneal keratocytes has been useful for tissue-specific targeting for genetic manipulation of the corneal stroma. (PMID: 32663498)

Storage

Storage:
Store at -80°C.

Storage Buffer:
PBS Only

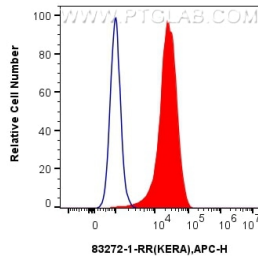
For technical support and original validation data for this product please contact:

T: 1 (888) 4PTGLAB (1-888-478-4522) (toll free in USA), or 1(312) 455-8498 (outside USA)

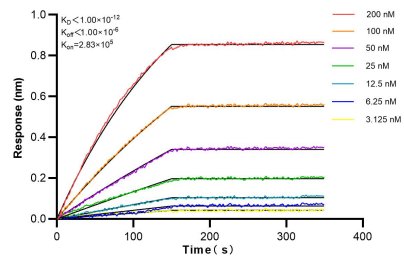
E: proteintech@ptglab.com
W: ptglab.com

This product is exclusively available under Proteintech Group brand and is not available to purchase from any other manufacturer.

Selected Validation Data



1×10^6 U251 were intracellularly stained with 0.2 μ g KERA Recombinant Antibody (83272-1-RR, Clone:230399B11) and APC-Conjugated AffiniPure Goat Anti-Rabbit IgG(H+L)(red), or 0.2 μ g Rabbit IgG control Rabbit PolyAb (30000-0-AP) (blue). Cells were fixed with 4% PFA and permeabilized with Flow Cytometry Perm Buffer (PF00011-C). This data was developed using the same antibody clone with 83272-1-PBS in a different storage buffer formulation.



Biolayer interferometry (BLI) kinetic assays of 83272-1-RR against Human KERA were performed. The affinity constant is below 1 pM.