

For Research Use Only

DUS2L Recombinant antibody

Catalog Number: 83265-8-RR



Basic Information

Catalog Number: 83265-8-RR	GenBank Accession Number: BC006527	Purification Method: Protein A purification
Size: 100ul , Concentration: 1000 ug/ml by Nanodrop;	GeneID (NCBI): 54920	CloneNo.: 240192C6
Source: Rabbit	UNIPROT ID: Q9NX74	Recommended Dilutions: WB 1:2000-1:10000
Isotype: IgG	Full Name: dihydrouridine synthase 2-like, SMM1 homolog (S. cerevisiae)	
Immunogen Catalog Number: AG23831	Observed MW: 55 kDa	

Applications

Tested Applications: WB, ELISA	Positive Controls: WB : HeLa cells, HEK-293 cells, RAW 264.7 cells
Species Specificity: human, mouse	

Background Information

Dihydrouridine synthase 2(DUS2L), is a cytoplasmic protein that catalyzes the conversion of uridine residues to dihydrouridine in the D-loop of tRNA. transfection of DUS2 cDNA into a human lung carcinoma cell line increased dihydrouridine in tRNA, whereas transfection of DUS2 small interfering RNA (siRNA) reduced tRNA-dihydrouridine, confirming that DUS2 has dihydrouridine synthase activity.

Storage

Storage:
Store at -20°C. Stable for one year after shipment.
Storage Buffer:
PBS with 0.02% sodium azide and 50% glycerol pH 7.3.
Aliquoting is unnecessary for -20°C storage

*** 20ul sizes contain 0.1% BSA

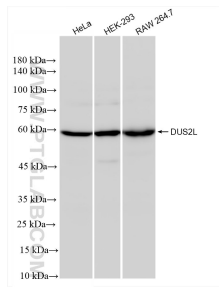
For technical support and original validation data for this product please contact:

T: 1 (888) 4PTGLAB (1-888-478-4522) (toll free in USA), or 1(312) 455-8498 (outside USA)

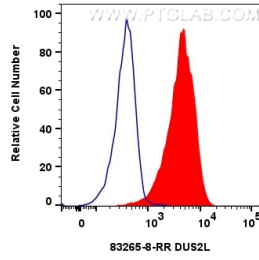
E: proteintech@ptglab.com
W: ptglab.com

This product is exclusively available under Proteintech Group brand and is not available to purchase from any other manufacturer.

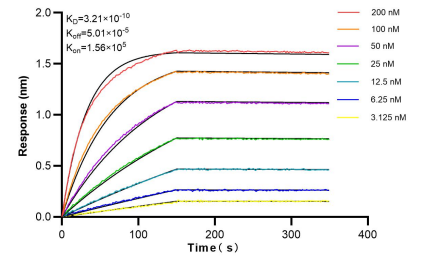
Selected Validation Data



Various lysates were subjected to SDS PAGE followed by western blot with 83265-8-RR (DUS2L antibody) at dilution of 1:5000 incubated at room temperature for 1.5 hours.



1x10⁶ HeLa cells were intracellularly stained with 0.25 ug DUS2L Recombinant antibody (83265-8-RR, Clone:240192C6) and CoraLite®488-Conjugated Goat Anti-Rabbit IgG(H+L) (SA00013-2)(red), or 0.25 ug Control Antibody (blue). Cells were fixed with 4% PFA and permeabilized with Flow Cytometry Perm Buffer (PF00011-C).



Bioluminescence resonance energy transfer (BRET) kinetic assays of 83265-8-RR against Human DUS2L were performed. The affinity constant is 0.321 nM.