

For Research Use Only

EFHD2 Recombinant antibody

Catalog Number: 83264-5-RR

1 Publications



Basic Information

Catalog Number: 83264-5-RR	GenBank Accession Number: BC023611	Purification Method: Protein A purification
Size: 100ul , Concentration: 500 ug/ml by Nanodrop;	GeneID (NCBI): 79180	CloneNo.: 240185H5
Source: Rabbit	UNIPROT ID: Q96C19	Recommended Dilutions: WB 1:2000-1:12000 IF/ICC 1:125-1:500
Isotype: IgG	Full Name: EF-hand domain family, member D2	
Immunogen Catalog Number: AG35084	Calculated MW: 27 kDa	
	Observed MW: 33 kDa	

Applications

Tested Applications: WB, IF/ICC, FC (Intra), ELISA	Positive Controls: WB : HuH-7 cells, NCI-H1299 cells, A549 cells IF/ICC : A431 cells,
Cited Applications: WB	
Species Specificity: human	
Cited Species: human	

Background Information

EFHD2 also named Swiprosin-1, is a Ca²⁺ binding actin protein. The expression of EFHD2 is upregulated during the activation of immune cells, epithelial and endothelial cells. The expression of EFHD2 is regulated by diverse signaling pathways that are contingent upon the specific type of cells. EFHD2 consists of 240 amino-acids. Based on the composition, the predicted molecular weight was reported to be 27 KDa while the apparent molecular weight was 33 KDa.

Notable Publications

Author	Pubmed ID	Journal	Application
Han Zhang	39308671	J Cancer	WB

Storage

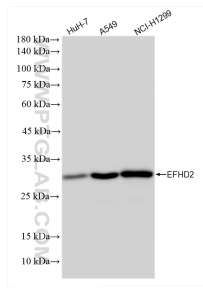
Storage:
Store at -20°C. Stable for one year after shipment.
Storage Buffer:
PBS with 0.02% sodium azide and 50% glycerol pH 7.3.
Aliquoting is unnecessary for -20°C storage

*** 20ul sizes contain 0.1% BSA

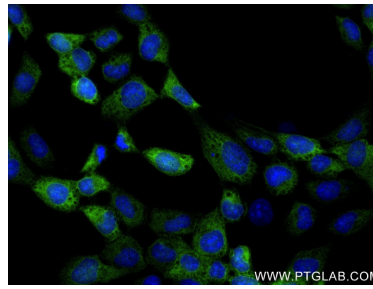
For technical support and original validation data for this product please contact:
T: 1 (888) 4PTGLAB (1-888-478-4522) (toll free in USA), or 1(312) 455-8498 (outside USA)
E: proteintech@ptglab.com
W: ptglab.com

This product is exclusively available under Proteintech Group brand and is not available to purchase from any other manufacturer.

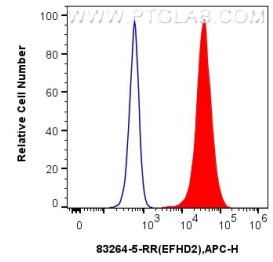
Selected Validation Data



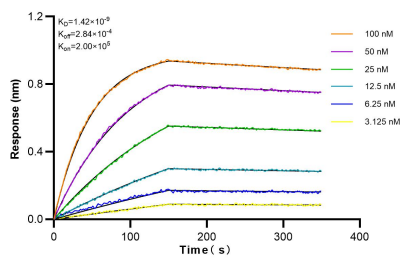
Various lysates were subjected to SDS PAGE followed by western blot with 83264-5-RR (EFHD2 antibody) at dilution of 1:8000 incubated at room temperature for 1.5 hours.



Immunofluorescent analysis of (-20°C Ethanol) fixed A431 cells using EFHD2 antibody (83264-5-RR, Clone: 240185H5) at dilution of 1:250 and CoraLite@488-Conjugated Goat Anti-Rabbit IgG(H+L) (SA00013-2).



1×10^6 A431 cells were intracellularly stained with 0.25 μ g EFHD2 Recombinant antibody (83264-5-RR, Clone:240185H5) and APC-Conjugated Goat Anti-Rabbit IgG(H+L)(red), or 0.25 μ g Isotype Control (blue). Cells were fixed with 4% PFA and permeabilized with Flow Cytometry Perm Buffer (PF00011-C).



Biolayer interferometry (BLI) kinetic assays of 83264-5-RR against Human EFHD2 were performed. The affinity constant is 1.42 nM.