

For Research Use Only

# CBX5 Recombinant antibody, PBS Only

Catalog Number: 83258-6-PBS



## Basic Information

Catalog Number:

83258-6-PBS

Size:

100ug, Concentration: 1 mg/ml by Nanodrop;

Source:

Rabbit

Isotype:

IgG

Immunogen Catalog Number:

AG34810

GenBank Accession Number:

BC006821

GeneID (NCBI):

23468

UNIPROT ID:

P45973

Full Name:

chromobox homolog 5 (HP1 alpha homolog, Drosophila)

Calculated MW:

191 aa, 22 kDa

Purification Method:

Protein A purification

CloneNo.:

240145G12

## Applications

Tested Applications:

WB, IF/ICC, ELISA

Species Specificity:

Human

## Storage

Storage:

Store at -80°C.

Storage Buffer:

PBS Only

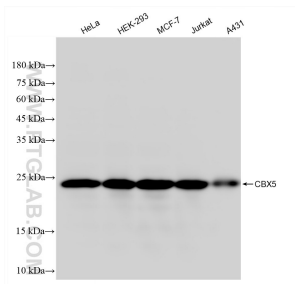
For technical support and original validation data for this product please contact:

T: 1 (888) 4PTGLAB (1-888-478-4522) (toll free in USA), or 1(312) 455-8498 (outside USA)

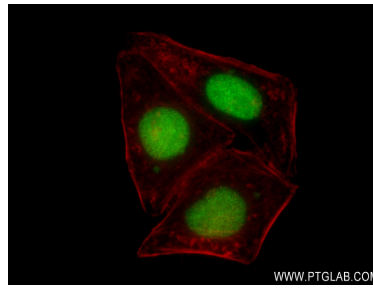
E: [proteintech@ptglab.com](mailto:proteintech@ptglab.com)  
W: [ptglab.com](http://ptglab.com)

This product is exclusively available under Proteintech Group brand and is not available to purchase from any other manufacturer.

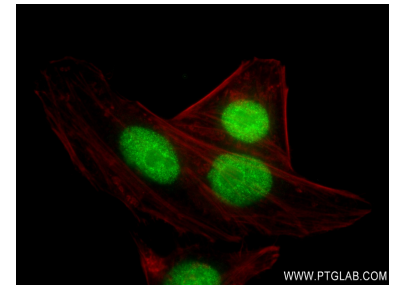
## Selected Validation Data



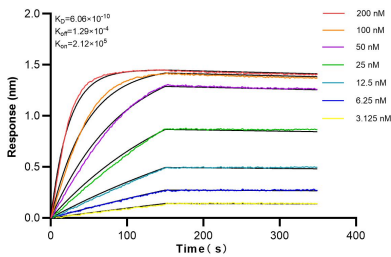
Various lysates were subjected to SDS PAGE followed by western blot with 83258-6-RR (CBX5 antibody) at dilution of 1:10000 incubated at room temperature for 1.5 hours. This data was developed using the same antibody clone with 83258-6-PBS in a different storage buffer formulation.



Immunofluorescent analysis of (4% PFA) fixed HepG2 cells using CBX5 antibody (83258-6-RR, Clone: 240145G12) at dilution of 1:400 and CoraLite® 488-Conjugated Goat Anti-Mouse IgG(H+L) (SA00013-1), CL594-Phalloidin (red). This data was developed using the same antibody clone with 83258-6-PBS in a different storage buffer formulation.



Immunofluorescent analysis of (4% PFA) fixed HepG2 cells using CBX5 antibody (83258-6-RR, Clone: 240145G12) at dilution of 1:400 and CoraLite® 488-Conjugated Goat Anti-Mouse IgG(H+L) (SA00013-1), CL594-Phalloidin (red). This data was developed using the same antibody clone with 83258-6-PBS in a different storage buffer formulation.



Biolayer interferometry (BLI) kinetic assays of 83258-6-RR against Human CBX5 were performed. The affinity constant is 0.606 nM.