

For Research Use Only

# CBX1 Recombinant antibody

Catalog Number: 83248-4-RR



## Basic Information

<b>Catalog Number:</b> 83248-4-RR	<b>GenBank Accession Number:</b> BC002609	<b>Purification Method:</b> Protein A purification
<b>Size:</b> 100ul , Concentration: 1000 µg/ml by Nanodrop;	<b>GeneID (NCBI):</b> 10951	<b>CloneNo.:</b> 240075H6
<b>Source:</b> Rabbit	<b>UNIPROT ID:</b> P83916	<b>Recommended Dilutions:</b> WB 1:5000-1:50000 IF/ICC 1:150-1:600
<b>Isotype:</b> IgG	<b>Full Name:</b> chromobox homolog 1 (HP1 beta homolog Drosophila )	
<b>Immunogen Catalog Number:</b> AG34901	<b>Calculated MW:</b> 27 kDa	
	<b>Observed MW:</b> 27 kDa	

## Applications

**Tested Applications:**  
WB, IF/ICC, FC (Intra), ELISA

**Species Specificity:**  
human, mouse

**Positive Controls:**  
**WB :** MCF-7 cells, mouse spleen tissue, mouse brain tissue, mouse kidney tissue, rat brain tissue, human kidney tissue  
**IF/ICC :** HeLa cells,

## Background Information

One function of heterochromatin is the epigenetic silencing by sequestration of genes into transcriptionally repressed nuclear neighborhoods. Heterochromatin protein 1 (HP1) is a major component of heterochromatin and is a candidate for establishing and mediating gene silencing. This protein is expressed in all adult and embryonic tissues, as a homodimer.

## Storage

**Storage:**  
Store at -20°C. Stable for one year after shipment.

**Storage Buffer:**  
PBS with 0.02% sodium azide and 50% glycerol pH 7.3.

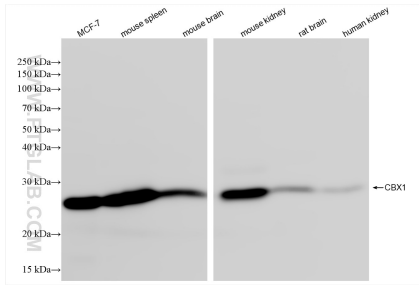
Aliquoting is unnecessary for -20°C storage

\*\*\* 20ul sizes contain 0.1% BSA

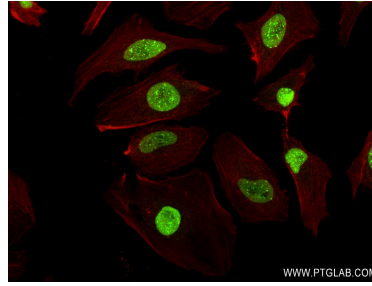
For technical support and original validation data for this product please contact:  
T: 1 (888) 4PTGLAB (1-888-478-4522) (toll free in USA), or 1(312) 455-8498 (outside USA)      E: proteintech@ptglab.com  
W: ptglab.com

This product is exclusively available under Proteintech Group brand and is not available to purchase from any other manufacturer.

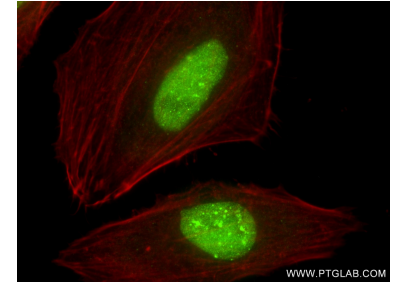
## Selected Validation Data



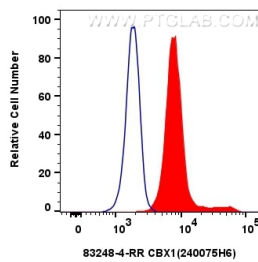
Various lysates were subjected to SDS PAGE followed by western blot with 83248-4-RR (CBX1 antibody) at dilution of 1:10000 incubated at room temperature for 1.5 hours.



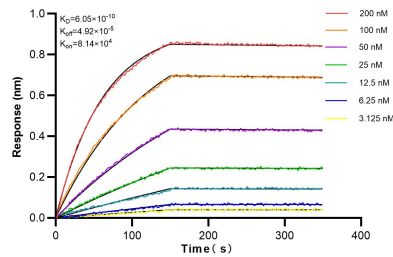
Immunofluorescent analysis of (4% PFA) fixed HeLa cells using CBX1 antibody (83248-4-RR, Clone: 240075H6) at dilution of 1:300 and CoraLite®488-Conjugated AffiniPure Goat Anti-Rabbit IgG(H+L) (SA00013-2), CL594-Phalloidin (red).



Immunofluorescent analysis of (4% PFA) fixed HeLa cells using CBX1 antibody (83248-4-RR, Clone: 240075H6) at dilution of 1:300 and CoraLite®488-Conjugated AffiniPure Goat Anti-Rabbit IgG(H+L) (SA00013-2), CL594-Phalloidin (red).



$1 \times 10^6$  HeLa cells were intracellularly stained with 0.25  $\mu$ g Cbx1 Recombinant Antibody (83248-4-RR, Clone:240075H6) and CoraLite®488-Conjugated AffiniPure Goat Anti-Rabbit IgG(H+L) (SA00013-2) (red), or 0.25  $\mu$ g Isotype Control (blue). Cells were fixed and permeabilized with Transcription Factor Staining Buffer Kit (PF00011).



Biolayer interferometry (BLI) kinetic assays of 83248-4-RR against Human CBX1 were performed. The affinity constant is 0.605 nM.