

For Research Use Only

CBX1 Recombinant antibody, PBS Only



Catalog Number: 83248-4-PBS

Basic Information

Catalog Number: 83248-4-PBS	GenBank Accession Number: BC002609	Purification Method: Protein A purification
Size: 100ug , Concentration: 1 mg/ml by Nanodrop;	GeneID (NCBI): 10951	CloneNo.: 240075H6
Source: Rabbit	UNIPROT ID: P83916	
Isotype: IgG	Full Name: chromobox homolog 1 (HP1 beta homolog Drosophila)	
Immunogen Catalog Number: AG34901	Calculated MW: 27 kDa	

Applications

Tested Applications:
ELISA, IF/ICC, WB

Species Specificity:
mouse, human

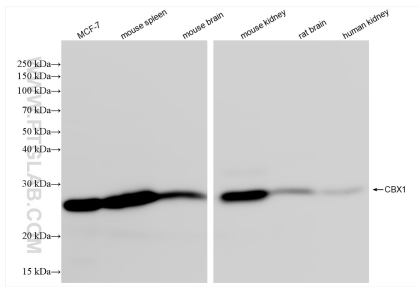
Storage

Storage:
Store at -80°C.
Storage Buffer:
PBS Only

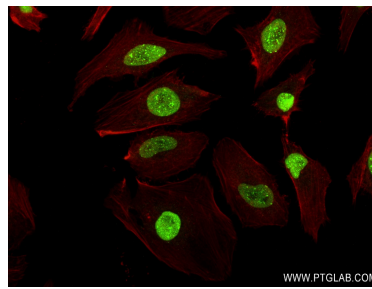
For technical support and original validation data for this product please contact:
T: 1 (888) 4PTGLAB (1-888-478-4522) (toll free in USA), or 1(312) 455-8498 (outside USA) E: proteintech@ptglab.com
W: ptglab.com

This product is exclusively available under Proteintech Group brand and is not available to purchase from any other manufacturer.

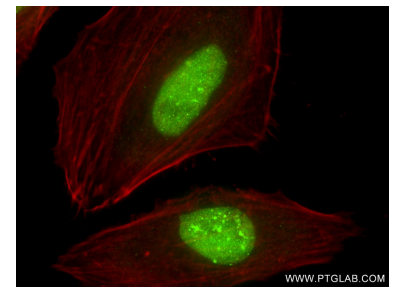
Selected Validation Data



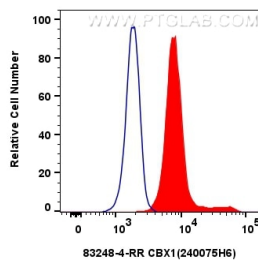
Various lysates were subjected to SDS PAGE followed by western blot with 83248-4-RR (CBX1 antibody) at dilution of 1:10000 incubated at room temperature for 1.5 hours. This data was developed using the same antibody clone with 83248-4-PBS in a different storage buffer formulation.



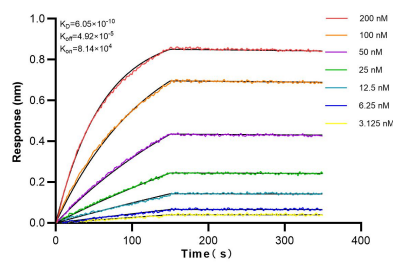
Immunofluorescent analysis of (4% PFA) fixed HeLa cells using CBX1 antibody (83248-4-RR, Clone: 240075H6) at dilution of 1:300 and CoraLite®488-Conjugated AffiniPure Goat Anti-Rabbit IgG(H+L) (SA00013-2), CL594-Phalloidin (red). This data was developed using the same antibody clone with 83248-4-PBS in a different storage buffer formulation.



Immunofluorescent analysis of (4% PFA) fixed HeLa cells using CBX1 antibody (83248-4-RR, Clone: 240075H6) at dilution of 1:300 and CoraLite®488-Conjugated AffiniPure Goat Anti-Rabbit IgG(H+L) (SA00013-2), CL594-Phalloidin (red). This data was developed using the same antibody clone with 83248-4-PBS in a different storage buffer formulation.



1×10^6 HeLa cells were intracellularly stained with 0.25 ug Cbx1 Recombinant Antibody (83248-4-RR, Clone:240075H6) and CoraLite®488-Conjugated AffiniPure Goat Anti-Rabbit IgG(H+L) (SA00013-2) (red), or 0.25 ug Isotype Control (blue). Cells were fixed and permeabilized with Transcription Factor Staining Buffer Kit (PF00011). This data was developed using the same antibody clone with 83248-4-PBS in a different storage buffer formulation.



Biolayer interferometry (BLI) kinetic assays of 83248-4-RR against Human CBX1 were performed. The affinity constant is 0.605 nM.