

For Research Use Only

CBX1 Recombinant antibody

Catalog Number: 83248-3-RR



Basic Information

Catalog Number: 83248-3-RR	GenBank Accession Number: BC002609	Purification Method: Protein A purification
Size: 100ul , Concentration: 500 µg/ml by Nanodrop;	GeneID (NCBI): 10951	CloneNo.: 240075E1
Source: Rabbit	UNIPROT ID: P83916	Recommended Dilutions: WB 1:2000-1:10000 IF/ICC 1:125-1:500
Isotype: IgG	Full Name: chromobox homolog 1 (HP1 beta homolog Drosophila)	
Immunogen Catalog Number: AG34901	Calculated MW: 27 kDa	
	Observed MW: 27 kDa	

Applications

Tested Applications: WB, IF/ICC, FC (Intra), ELISA	Positive Controls: WB : CHO cells, PC-12 cells, MCF-7 cells, NIH/3T3 cells, mouse spleen tissue, mouse brain tissue
Species Specificity: human, mouse, rat	IF/ICC : HeLa cells, A431 cells

Background Information

One function of heterochromatin is the epigenetic silencing by sequestration of genes into transcriptionally repressed nuclear neighborhoods. Heterochromatin protein 1 (HP1) is a major component of heterochromatin and is a candidate for establishing and mediating gene silencing. This protein is expressed in all adult and embryonic tissues, as a homodimer.

Storage

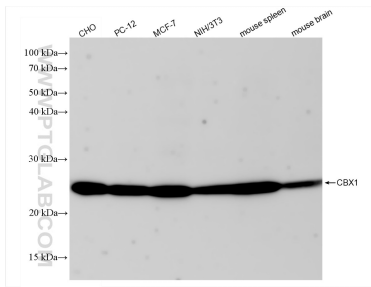
Storage:
Store at -20°C. Stable for one year after shipment.
Storage Buffer:
PBS with 0.02% sodium azide and 50% glycerol pH 7.3.
Aliquoting is unnecessary for -20°C storage

***** 20ul sizes contain 0.1%BSA**

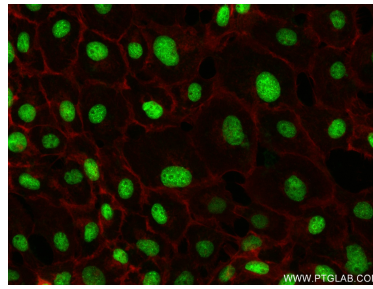
For technical support and original validation data for this product please contact:
T: 1 (888) 4PTGLAB (1-888-478-4522) (toll free in USA), or 1(312) 455-8498 (outside USA)
E: proteintech@ptglab.com
W: ptglab.com

This product is exclusively available under Proteintech Group brand and is not available to purchase from any other manufacturer.

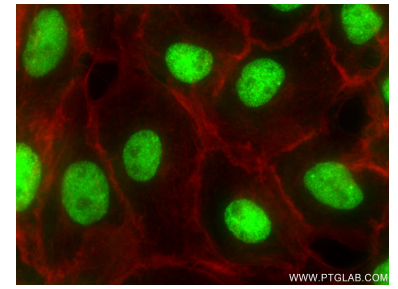
Selected Validation Data



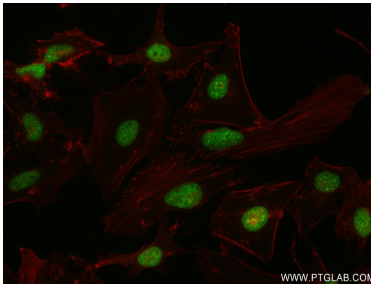
Various lysates were subjected to SDS PAGE followed by western blot with 83248-3-RR (CBX1 antibody) at dilution of 1:5000 incubated at room temperature for 1.5 hours.



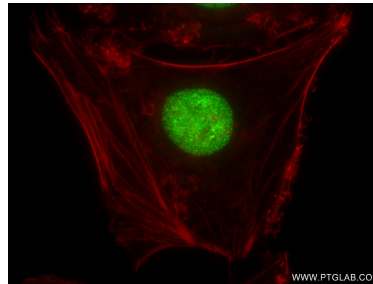
Immunofluorescent analysis of (4% PFA) fixed A431 cells using CBX1 antibody (83248-3-RR, Clone: 240075E1) at dilution of 1:250 and CoraLite® 488-Conjugated AffiniPure Goat Anti-Mouse IgG(H+L) (SA00013-1), CL594-Phalloidin (red).



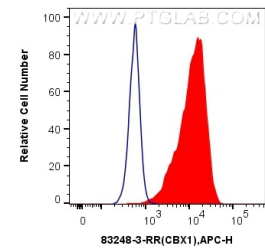
Immunofluorescent analysis of (4% PFA) fixed A431 cells using CBX1 antibody (83248-3-RR, Clone: 240075E1) at dilution of 1:250 and CoraLite® 488-Conjugated AffiniPure Goat Anti-Mouse IgG(H+L) (SA00013-1), CL594-Phalloidin (red).



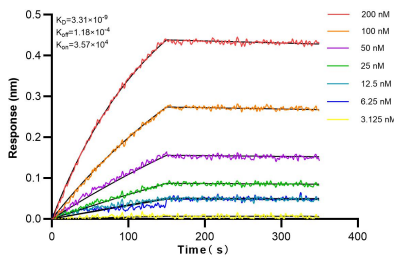
Immunofluorescent analysis of (4% PFA) fixed HeLa cells using CBX1 antibody (83248-3-RR, Clone: 240075E1) at dilution of 1:250 and CoraLite® 488-Conjugated AffiniPure Goat Anti-Mouse IgG(H+L) (SA00013-1), CL594-Phalloidin (red).



Immunofluorescent analysis of (4% PFA) fixed HeLa cells using CBX1 antibody (83248-3-RR, Clone: 240075E1) at dilution of 1:250 and CoraLite® 488-Conjugated AffiniPure Goat Anti-Mouse IgG(H+L) (SA00013-1), CL594-Phalloidin (red).



1×10^6 HeLa cells were intracellularly stained with 0.25 μ g CBX1 Recombinant antibody (83248-3-RR, Clone:240075E1) and APC-Conjugated AffiniPure Goat Anti-Rabbit IgG(H+L)(red), or 0.25 μ g Isotype Control (blue). Cells were fixed and permeabilized with Transcription Factor Staining Buffer Kit (PF00011).



Biolayer interferometry (BLI) kinetic assays of 83248-3-RR against Human CBX1 were performed. The affinity constant is 3.31 nM.