

For Research Use Only

SLC16A11 Recombinant antibody

Catalog Number: 83239-5-RR



Basic Information

Catalog Number:

83239-5-RR

Size:

100ul , Concentration: 800 ug/ml by Nanodrop;

Source:

Rabbit

Isotype:

IgG

Immunogen Catalog Number:

AG24920

GenBank Accession Number:

BC093860

GeneID (NCBI):

162515

UNIPROT ID:

Q8NCK7

Full Name:

solute carrier family 16, member 11 (monocarboxylic acid transporter 11)

Calculated MW:

471 aa, 48 kDa

Observed MW:

48 kDa

Purification Method:

Protein A purification

CloneNo.:

240081H5

Recommended Dilutions:

WB: 1:2000-1:16000

FC (Intra): 0.25 ug per 10⁶ cells in a 100 µl suspension

Applications

Tested Applications:

WB, FC (Intra), ELISA

Species Specificity:

human, mouse

Positive Controls:

WB : A549 cells, HeLa cells, mouse brain tissue, mouse stomach tissue

FC (Intra) : A549 cells,

Storage

Storage:

Store at -20°C. Stable for one year after shipment.

Storage Buffer:

PBS with 0.02% sodium azide and 50% glycerol, pH7.3

Aliquoting is unnecessary for -20°C storage

*** 20ul sizes contain 0.1% BSA

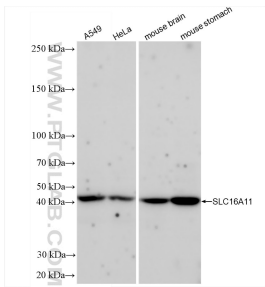
For technical support and original validation data for this product please contact:

T: 1 (888) 4PTGLAB (1-888-478-4522) (toll free in USA), or 1(312) 455-8498 (outside USA)

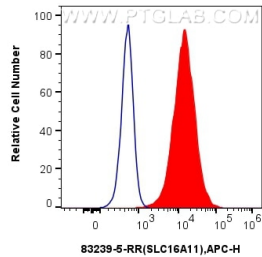
E: proteintech@ptglab.com
W: ptglab.com

This product is exclusively available under Proteintech Group brand and is not available to purchase from any other manufacturer.

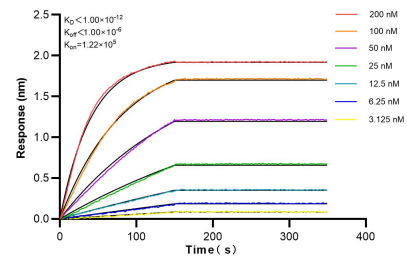
Selected Validation Data



Various lysates were subjected to SDS PAGE followed by western blot with 83239-5-RR (SLC16A11 antibody) at dilution of 1:8000 incubated at room temperature for 1.5 hours.



1×10^6 A549 cells were intracellularly stained with 0.25 μ g SLC16A11 Recombinant antibody (83239-5-RR, Clone:240081H5) and APC-Conjugated Goat Anti-Rabbit IgG(H+L)(red), or 0.25 μ g Isotype Control (blue). Cells were fixed with 4% PFA and permeabilized with Flow Cytometry Perm Buffer (PF00011-C).



Biolayer interferometry (BLI) kinetic assays of 83239-5-RR against Human SLC16A11 were performed. The affinity constant is below 1 pM.