

For Research Use Only

SOX8 Recombinant antibody, PBS Only (Capture/Detector)



Catalog Number: 83238-3-PBS

Basic Information

Catalog Number: 83238-3-PBS	GenBank Accession Number: BC031797	Purification Method: Protein A purification
Size: 100ug, Concentration: 1mg/ml by Nanodrop;	GeneID (NCBI): 30812	CloneNo.: 240120H6
Source: Rabbit	UNIPROT ID: P57073	
Isotype: IgG	Full Name: SRY (sex determining region Y)-box 8	
Immunogen Catalog Number: AG34395	Calculated MW: 446 aa, 47 kDa	

Applications

Tested Applications:
IF, Indirect ELISA, Cytometric bead array

Species Specificity:
Human

Product Information

83238-3-PBS targets SOX8 as part of a matched antibody pair:

MP00222-1: 83238-1-PBS capture and 83238-3-PBS detection (validated in Cytometric bead array)

MP00222-2: 83238-3-PBS capture and 83238-2-PBS detection (validated in Cytometric bead array)

Unconjugated rabbit recombinant monoclonal antibody in PBS only (BSA and azide free) storage buffer at a concentration of 1 mg/mL, ready for conjugation. Created using Proteintech's proprietary in-house recombinant technology. Recombinant production enables unrivalled batch-to-batch consistency, easy scale-up, and future security of supply.

This conjugation ready format makes antibodies ideal for use in many applications including: ELISAs, multiplex assays requiring matched pairs, mass cytometry, and multiplex imaging applications. Antibody use should be optimized by the end user for each application and assay.

Storage

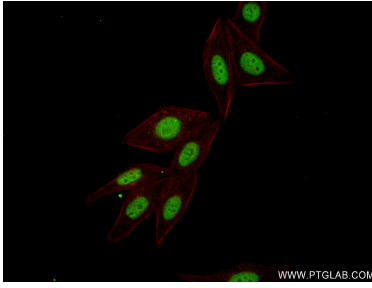
Storage:
Store at -80°C.

Storage Buffer:
PBS Only

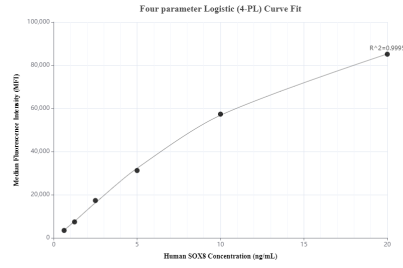
For technical support and original validation data for this product please contact:
T: 1 (888) 4PTGLAB (1-888-478-4522) (toll free in USA), or 1(312) 455-8498 (outside USA) E: proteintech@ptglab.com
W: ptglab.com

This product is exclusively available under Proteintech Group brand and is not available to purchase from any other manufacturer.

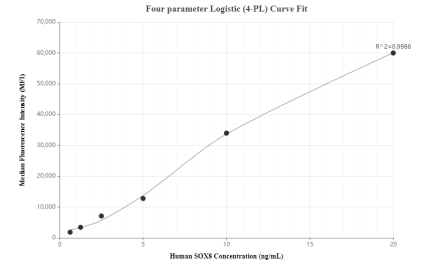
Selected Validation Data



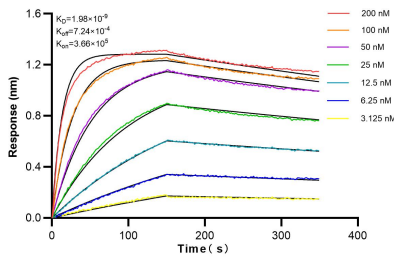
Immunofluorescent analysis of (4% PFA) fixed HepG2 cells using SOX8 antibody (83238-3-RR, Clone: 240120H6) at dilution of 1:250 and CoraLite®488-Conjugated AffiniPure Goat Anti-Rabbit IgG(H+L) (SA00013-2), CL594-Phalloidin (red). This data was developed using the same antibody clone with 83238-3-PBS in a different storage buffer formulation.



Cytometric bead array standard curve of MP00222-1, SOX8 Recombinant Matched Antibody Pair, PBS Only. Capture antibody: 83238-1-PBS. Detection antibody: 83238-3-PBS. Standard: Ag34395. Range: 0.625-20 ng/mL.



Cytometric bead array standard curve of MP00222-2, SOX8 Recombinant Matched Antibody Pair, PBS Only. Capture antibody: 83238-3-PBS. Detection antibody: 83238-2-PBS. Standard: Ag34395. Range: 0.625-20 ng/mL.



Bi-layer interferometry (BLI) kinetic assays of 83238-3-RR against Human SOX8 were performed. The affinity constant is 1.98 nM.