

For Research Use Only

TDO2 Recombinant antibody, PBS Only (Capture)

Catalog Number: 83236-2-PBS



Basic Information

Catalog Number: 83236-2-PBS	GenBank Accession Number: BC005355	Purification Method: Protein A purification
Size: 100ug, Concentration: 1mg/ml by Nanodrop;	GeneID (NCBI): 6999	CloneNo.: 240068C2
Source: Rabbit	UNIPROT ID: P48775	
Isotype: IgG	Full Name: tryptophan 2,3-dioxygenase	
Immunogen Catalog Number: AG8531	Calculated MW: 406 aa, 48 kDa	
	Observed MW: 40-50 kDa	

Applications

Tested Applications:
WB, Cytometric bead array, Indirect ELISA

Species Specificity:
human, rat

Product Information

83236-2-PBS targets TDO2 as part of a matched antibody pair:

MP00219-1: 83236-2-PBS capture and 83236-1-PBS detection (validated in Cytometric bead array)

MP00219-2: 83236-2-PBS capture and 83236-3-PBS detection (validated in Cytometric bead array)

Unconjugated rabbit recombinant monoclonal antibody in PBS only (BSA and azide free) storage buffer at a concentration of 1 mg/mL, ready for conjugation. Created using Proteintech's proprietary in-house recombinant technology. Recombinant production enables unrivalled batch-to-batch consistency, easy scale-up, and future security of supply.

This conjugation ready format makes antibodies ideal for use in many applications including: ELISAs, multiplex assays requiring matched pairs, mass cytometry, and multiplex imaging applications. Antibody use should be optimized by the end user for each application and assay.

Background Information

TDO2 (tryptophan 2,3-dioxygenase), IDO1 (indoleamine 2,3-dioxygenase 1) and IDO2 are three enzymes that catalyze the amino acid tryptophan into kynurenine in the kynurenine pathway (PMID: 23090118, 28469468). TDO2 plays an important role in neurological diseases such as Alzheimer's disease, Parkinson's disease and autism. Overexpression of TDO2 promoted tumor cell survival and was correlated with tumor grade and poor prognosis in triple negative breast cancer, brain tumors and esophageal squamous cell carcinoma. TDO2 may be a potential therapeutic target in some cancers. (PMID: 21976023, 30134247)

Storage

Storage:
Store at -80°C.

Storage Buffer:
PBS Only

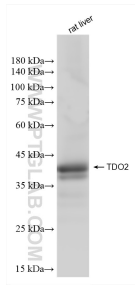
For technical support and original validation data for this product please contact:

T: 1 (888) 4PTGLAB (1-888-478-4522) (toll free in USA), or 1(312) 455-8498 (outside USA)

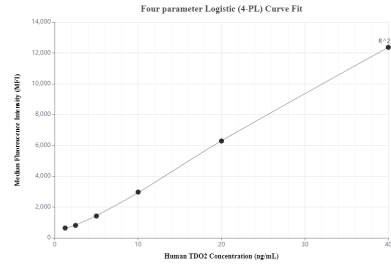
E: proteintech@ptglab.com
W: ptglab.com

This product is exclusively available under Proteintech Group brand and is not available to purchase from any other manufacturer.

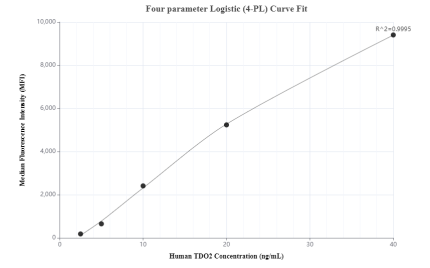
Selected Validation Data



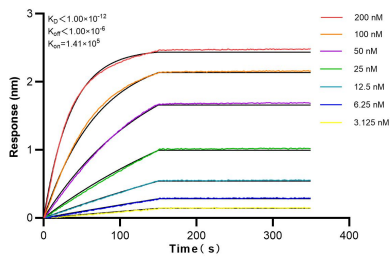
rat liver tissue were subjected to SDS PAGE followed by western blot with 83236-2-RR (TDO2 antibody) at dilution of 1:10000 incubated at room temperature for 1.5 hours. This data was developed using the same antibody clone with 83236-2-PBS in a different storage buffer formulation.



Cytometric bead array standard curve of MP00219-1, TDO2 Recombinant Matched Antibody Pair, PBS Only. Capture antibody: 83236-2-PBS. Detection antibody: 83236-1-PBS. Standard: Ag8531. Range: 1.25-40 ng/mL.



Cytometric bead array standard curve of MP00219-2, TDO2 Recombinant Matched Antibody Pair, PBS Only. Capture antibody: 83236-2-PBS. Detection antibody: 83236-3-PBS. Standard: Ag8531. Range: 1.25-40 ng/mL.



Bi-layer interferometry (BLI) kinetic assays of 83236-2-RR against Human TDO2 were performed. The affinity constant is below 1 pM.