

For Research Use Only

SULT1B1 Recombinant antibody, PBS Only (Capture)

Catalog Number:83228-1-PBS



Basic Information

Catalog Number: 83228-1-PBS	GenBank Accession Number: BC010895	Purification Method: Protein A purification
Size: 100ug , Concentration: 1mg/ml by Nanodrop;	GeneID (NCBI): 27284	CloneNo.: 240119C12
Source: Rabbit	UNIPROT ID: O43704	
Isotype: IgG	Full Name: sulfotransferase family, cytosolic, 1B, member 1	
Immunogen Catalog Number: AG9009	Calculated MW: 296 aa, 35 kDa	
	Observed MW: 35 kDa	

Applications

Tested Applications:
WB, IHC, FC (Intra), Cytometric bead array, Indirect ELISA

Species Specificity:
human, mouse

Product Information

83228-1-PBS targets SULT1B1 as part of a matched antibody pair:

MP00184-1: 83228-1-PBS capture and 83228-2-PBS detection (validated in Cytometric bead array)

Unconjugated rabbit recombinant monoclonal antibody in PBS only (BSA and azide free) storage buffer at a concentration of 1 mg/mL, ready for conjugation. Created using Proteintech's proprietary in-house recombinant technology. Recombinant production enables unrivalled batch-to-batch consistency, easy scale-up, and future security of supply.

This conjugation ready format makes antibodies ideal for use in many applications including: ELISAs, multiplex assays requiring matched pairs, mass cytometry, and multiplex imaging applications. Antibody use should be optimized by the end user for each application and assay.

Background Information

Sulfotransferase 1B1 (SULT1B1) is expressed at highest levels throughout the human colon and small intestine but can also be found at moderate levels in human liver, kidney, and white blood cells (PMID: 28084139). Certain SULT1B1 SNPs may influence the activity of thyroid hormones and the mutagenicity of polycyclic aromatic hydrocarbons (PMID: 34107842).

Storage

Storage:
Store at -80°C.
Storage Buffer:
PBS Only

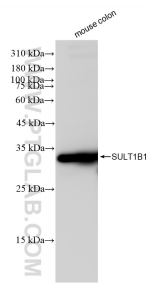
For technical support and original validation data for this product please contact:

T: 1 (888) 4PTGLAB (1-888-478-4522) (toll free in USA), or 1(312) 455-8498 (outside USA)

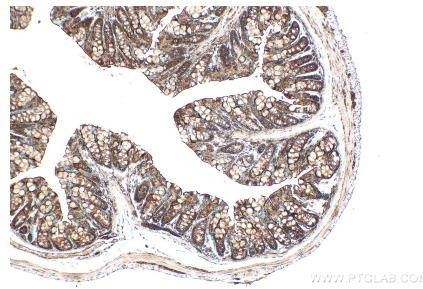
E: proteintech@ptglab.com
W: ptglab.com

This product is exclusively available under Proteintech Group brand and is not available to purchase from any other manufacturer.

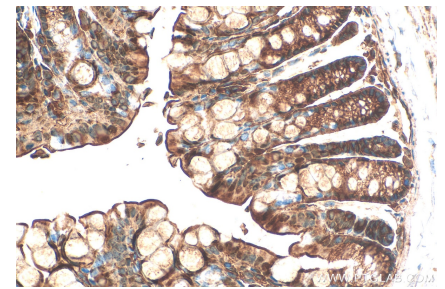
Selected Validation Data



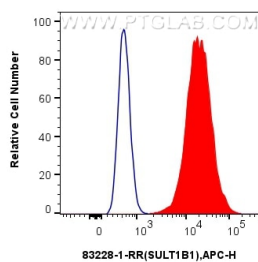
mouse colon tissue were subjected to SDS PAGE followed by western blot with 83228-1-RR (SULT1B1 antibody) at dilution of 1:10000 incubated at room temperature for 1.5 hours. This data was developed using the same antibody clone with 83228-1-PBS in a different storage buffer formulation.



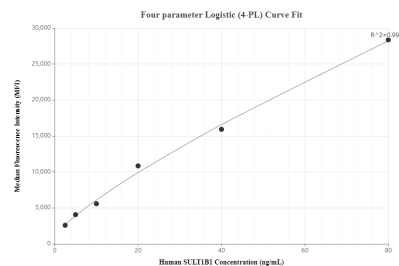
Immunohistochemical analysis of paraffin-embedded mouse colon tissue slide using 83228-1-RR (SULT1B1 antibody) at dilution of 1:400 (under 10x lens). Heat mediated antigen retrieval with Tris-EDTA buffer (pH 9.0). This data was developed using the same antibody clone with 83228-1-PBS in a different storage buffer formulation.



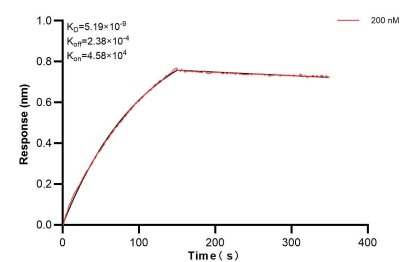
Immunohistochemical analysis of paraffin-embedded mouse colon tissue slide using 83228-1-RR (SULT1B1 antibody) at dilution of 1:400 (under 40x lens). Heat mediated antigen retrieval with Tris-EDTA buffer (pH 9.0). This data was developed using the same antibody clone with 83228-1-PBS in a different storage buffer formulation.



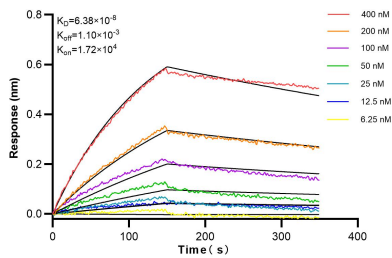
1×10^6 A431 cells were intracellularly stained with 0.25 ug SULT1B1 Recombinant antibody (83228-1-RR, Clone:240119C12) and APC-Conjugated AffiniPure Goat Anti-Rabbit IgG(H+L) (red), or 0.25 ug Isotype Control (blue). Cells were fixed with 4% PFA and permeabilized with Flow Cytometry Perm Buffer (PF00011-C). This data was developed using the same antibody clone with 83228-1-PBS in a different storage buffer formulation.



Cytometric bead array standard curve of MP00184-1, SULT1B1 Recombinant Matched Antibody Pair, PBS Only. Capture antibody: 83228-1-PBS. Detection antibody: 83228-2-PBS. Standard: Ag9009. Range: 2.5-80 ng/mL.



Biolayer interferometry (BLI) kinetic assay of 83228-1-PBS against Human SULT1B1 was performed. The affinity constant is 5.19 nM.



Biolayer interferometry (BLI) kinetic assays of 83228-1-RR against Human SULT1B1 were performed. The affinity constant is 63.8 nM.