

For Research Use Only

TCP11L2 Recombinant antibody

Catalog Number:83227-1-RR



Basic Information

| | | |
|----------------------------------------------------------------|--------------------------------------------------|--------------------------------------------------------------------------|
| Catalog Number: 83227-1-RR | GenBank Accession Number: BC033617 | Purification Method: Protein A purification |
| Size: 100ul , Concentration: 1000 ug/ml by Nanodrop; | GeneID (NCBI): 255394 | CloneNo.: 240096F6 |
| Source: Rabbit | UNIPROT ID: Q8N4U5 | Recommended Dilutions: WB 1:2000-1:10000 IF/ICC 1:200-1:800 |
| Isotype: IgG | Full Name: t-complex 11 (mouse)-like 2 | |
| Immunogen Catalog Number: AG11185 | Calculated MW: 519 aa, 58 kDa | |
| | Observed MW: 60 kDa | |

Applications

| | |
|--------------------------------------------------------------|------------------------------------------------------------------------|
| Tested Applications: WB, IF/ICC, FC (Intra), ELISA | Positive Controls: WB : Jurkat cells, MDCK cells, U251 cells |
| Species Specificity: human, canine | IF/ICC : U-251 cells, |

Background Information

TCP11L2 is a protein containing a serine-rich region in its N-terminal region. It is a member of the TCP11 family, which includes SOK1, TCP11L1, and TCP11L2. TCP11L2 has a role in the migration and differentiation of skeletal muscle-derived satellite cells. It has been shown that Tcp11l2 expression gradually increased during the differentiation of bovine muscle-derived satellite cells. (PMID: 32017087)

Storage

Storage:
Store at -20°C. Stable for one year after shipment.
Storage Buffer:
PBS with 0.02% sodium azide and 50% glycerol pH 7.3.
Aliquoting is unnecessary for -20°C storage

*** 20ul sizes contain 0.1% BSA

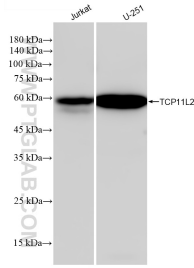
For technical support and original validation data for this product please contact:

T: 1 (888) 4PTGLAB (1-888-478-4522) (toll free in USA), or 1(312) 455-8498 (outside USA)

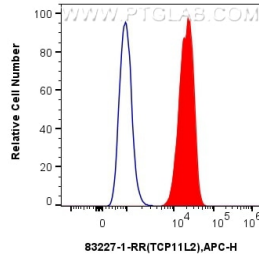
E: proteintech@ptglab.com
W: ptglab.com

This product is exclusively available under Proteintech Group brand and is not available to purchase from any other manufacturer.

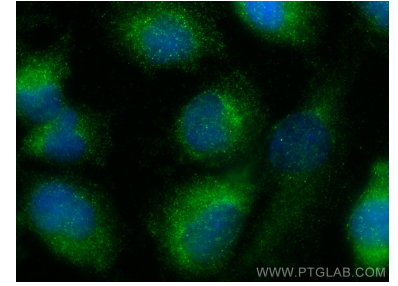
Selected Validation Data



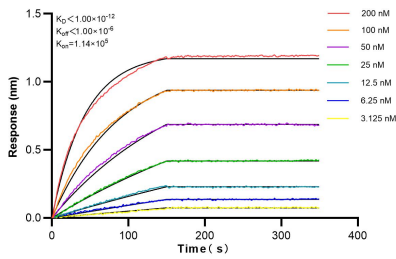
Various lysates were subjected to SDS PAGE followed by western blot with 83227-1-RR (TCP11L2 antibody) at dilution of 1:5000 incubated at room temperature for 1.5 hours.



1×10^6 A431 cells were intracellularly stained with 0.25 ug TCP11L2 Recombinant antibody (83227-1-RR, Clone:240096F6) and APC-Conjugated AffiniPure Goat Anti-Rabbit IgG(H+L) (red), or 0.25 ug Isotype Control (blue). Cells were fixed and permeabilized with Transcription Factor Staining Buffer Kit (PF00011).



Immunofluorescent analysis of (-20°C Ethanol) fixed U-251 cells using TCP11L2 antibody (83227-1-RR, Clone: 240096F6) at dilution of 1:400 and Multi-rAb CoraLite® Plus 488-Goat Anti-Rabbit Recombinant Secondary Antibody (H+L) (RGAR002).



Biolayer interferometry (BLI) kinetic assays of 83227-1-RR against Human TCP11L2 were performed. The affinity constant is below 1 pM.