

For Research Use Only

SLC12A8 Recombinant antibody, PBS Only (Detector)

Catalog Number:83225-2-PBS



Basic Information

| | | |
|--|---|---|
| Catalog Number: 83225-2-PBS | GenBank Accession Number: BC020506 | Purification Method: Protein A purification |
| Size: 100ug , Concentration: 1mg/ml by Nanodrop; | GeneID (NCBI): 84561 | CloneNo.: 240082B11 |
| Source: Rabbit | UNIPROT ID: A0AV02 | |
| Isotype: IgG | Full Name: solute carrier family 12 (potassium/chloride transporters), member 8 | |
| Immunogen Catalog Number: AG34354 | Calculated MW: 714 aa, 80 kDa | |

Applications

Tested Applications:
IHC, IF/ICC, FC (Intra), Cytometric bead array, Indirect ELISA

Species Specificity:
human

Product Information

83225-2-PBS targets SLC12A8 as part of a matched antibody pair:

MP00171-1: 83225-1-PBS capture and 83225-2-PBS detection (validated in Cytometric bead array)

Unconjugated rabbit recombinant monoclonal antibody in PBS only (BSA and azide free) storage buffer at a concentration of 1 mg/mL, ready for conjugation. Created using Proteintech's proprietary in-house recombinant technology. Recombinant production enables unrivalled batch-to-batch consistency, easy scale-up, and future security of supply.

This conjugation ready format makes antibodies ideal for use in many applications including: ELISAs, multiplex assays requiring matched pairs, mass cytometry, and multiplex imaging applications. Antibody use should be optimized by the end user for each application and assay.

Storage

Storage:
Store at -80°C.
Storage Buffer:
PBS Only

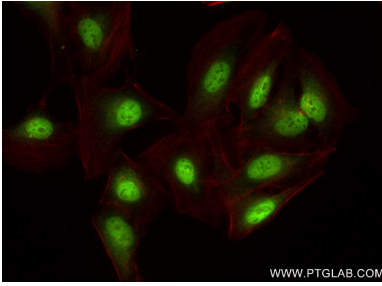
For technical support and original validation data for this product please contact:

T: 1 (888) 4PTGLAB (1-888-478-4522) (toll free in USA), or 1(312) 455-8498 (outside USA)

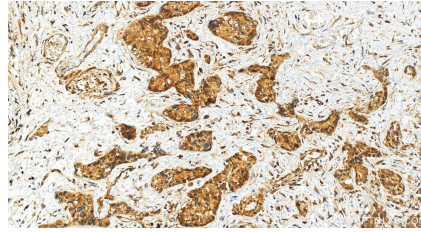
E: proteintech@ptglab.com
W: ptglab.com

This product is exclusively available under Proteintech Group brand and is not available to purchase from any other manufacturer.

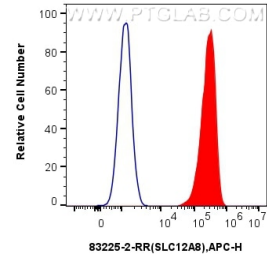
Selected Validation Data



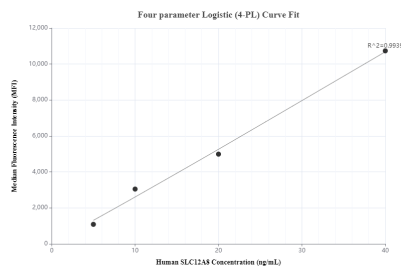
Immunofluorescent analysis of (4% PFA) fixed U2OS cells using SLC12A8 antibody (83225-2-RR, Clone: 240082B11) at dilution of 1:400 and CoraLite®488-Conjugated AffiniPure Goat Anti-Rabbit IgG(H+L) (SA00013-2), CL594-Phalloidin (red). This data was developed using the same antibody clone with 83225-2-PBS in a different storage buffer formulation.



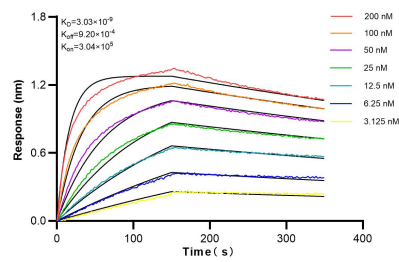
Immunohistochemical analysis of paraffin-embedded human intrahepatic cholangiocarcinoma tissue slide using 83225-2-RR (SLC12A8 antibody) at dilution of 1:200 (under 20x lens). Heat mediated antigen retrieval with Tris-EDTA buffer (pH 9.0). This data was developed using the same antibody clone with 83225-2-PBS in a different storage buffer formulation.



1×10^6 MCF-7 cells were intracellularly stained with 0.25 μ g SLC12A8 Recombinant antibody (83225-2-RR, Clone:240082B11) and APC-Conjugated AffiniPure Goat Anti-Rabbit IgG(H+L) (red), or 0.25 μ g Isotype Control (blue). Cells were fixed and permeabilized with Transcription Factor Staining Buffer Kit (PF00011). This data was developed using the same antibody clone with 83225-2-PBS in a different storage buffer formulation.



Cytometric bead array standard curve of MP00171-1, SLC12A8 Recombinant Matched Antibody Pair, PBS Only. Capture antibody: 83225-1-PBS. Detection antibody: 83225-2-PBS. Standard: Ag34354. Range: 5-40 ng/mL.



Biolayer interferometry (BLI) kinetic assays of 83225-2-RR against Human SLC12A8 were performed. The affinity constant is 3.03 nM.