

For Research Use Only

# NUDCD2 Recombinant antibody

Catalog Number: 83217-5-RR

Featured Product



## Basic Information

Catalog Number:

83217-5-RR

Size:

100ul, Concentration: 1000 ug/ml by Nanodrop;

Source:

Rabbit

Isotype:

IgG

Immunogen Catalog Number:

AG15579

GenBank Accession Number:

BC017934

GeneID (NCBI):

134492

UNIPROT ID:

Q8WVJ2

Full Name:

NudC domain containing 2

Calculated MW:

157 aa, 18 kDa

Observed MW:

18 kDa

Purification Method:

Protein A purification

CloneNo.:

230513A5

Recommended Dilutions:

WB 1:5000-1:50000

IP 0.5-4.0 ug for 1.0-3.0 mg of total protein lysate

IF/ICC 1:125-1:500

## Applications

Tested Applications:

WB, IF/ICC, FC (Intra), IP, ELISA

Species Specificity:

human

Positive Controls:

WB : HEK-293 cells, K-562 cells, HepG2 cells, U-251 cells

IP : HepG2 cells,

IF/ICC : HepG2 cells,

## Background Information

NUDCD2, also known as NudCL2, is an HSP90 cochaperone that regulates sister chromatid cohesion during mitosis. NUDCD2 also plays a role in ciliogenesis (PMID: 30368549, 34480124). NUDCD2 regulates the LIS1/dynein pathway by stabilizing LIS1 with Hsp90 chaperone (PMID: 20133715).

## Storage

Storage:

Store at -20°C. Stable for one year after shipment.

Storage Buffer:

PBS with 0.02% sodium azide and 50% glycerol pH 7.3.

Aliquoting is unnecessary for -20°C storage

\*\*\* 20ul sizes contain 0.1% BSA

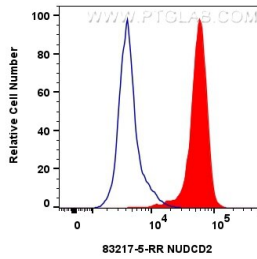
For technical support and original validation data for this product please contact:

T: 1 (888) 4PTGLAB (1-888-478-4522) (toll free in USA), or 1(312) 455-8498 (outside USA)

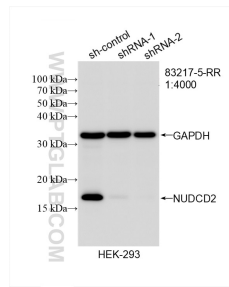
E: proteintech@ptglab.com  
W: ptglab.com

This product is exclusively available under Proteintech Group brand and is not available to purchase from any other manufacturer.

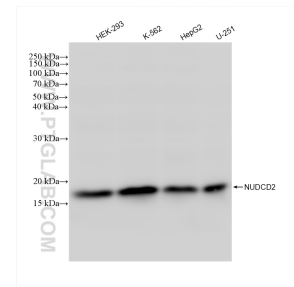
## Selected Validation Data



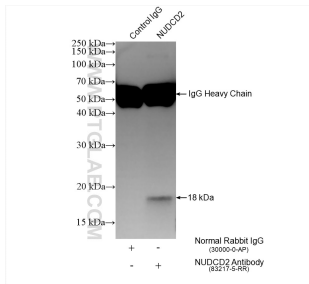
1x10<sup>6</sup> HepG2 cells were intracellularly stained with 0.25 ug NUDCD2 Recombinant antibody (83217-5-RR, Clone:230513A5) and CoraLite®488-Conjugated Goat Anti-Rabbit IgG(H+L) (SA00013-2) (red), or 0.25 ug Rabbit IgG control Rabbit PolyAb (30000-0-AP) (blue). Cells were fixed with 4% PFA and permeabilized with Flow Cytometry Perm Buffer (PF00011-C).



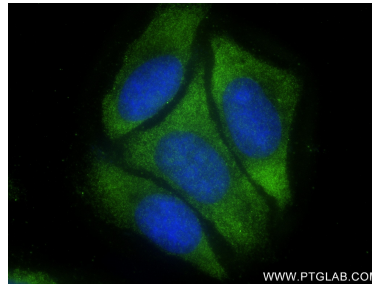
WB result of NUDCD2 antibody (83217-5-RR; 1:4000; incubated at room temperature for 1.5 hours) with sh-Control and sh-NUDCD2 transfected HEK-293 cells.



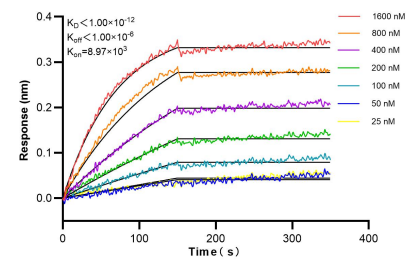
Various lysates were subjected to SDS PAGE followed by western blot with 83217-5-RR (NUDCD2 antibody) at dilution of 1:10000 incubated at room temperature for 1.5 hours.



IP result of anti-NUDCD2 (IP:83217-5-RR, 4ug; Detection:83217-5-RR 1:4000) with HepG2 cells lysate 1085 ug.



Immunofluorescent analysis of (-20°C Ethanol) fixed HepG2 cells using NUDCD2 antibody (83217-5-RR, Clone: 230513A5) at dilution of 1:250 and CoraLite®488-Conjugated AffiniPure Goat Anti-Rabbit IgG(H+L) (SA00013-2).



Biolayer interferometry (BLI) kinetic assays of 83217-5-RR against Human NUDCD2 were performed. The affinity constant is below 1 pM.