

For Research Use Only

# GRAF Recombinant antibody

Catalog Number: 83206-1-RR



## Basic Information

<b>Catalog Number:</b> 83206-1-RR	<b>GenBank Accession Number:</b> BC068555	<b>Purification Method:</b> Protein A purification
<b>Size:</b> 100ul , Concentration: 800 ug/ml by Nanodrop;	<b>GeneID (NCBI):</b> 23092	<b>CloneNo.:</b> 240086A11
<b>Source:</b> Rabbit	<b>UNIPROT ID:</b> Q9UNA1	<b>Recommended Dilutions:</b> WB 1:500-1:2000
<b>Isotype:</b> IgG	<b>Full Name:</b> Rho GTPase activating protein 26	
<b>Immunogen Catalog Number:</b> AG12008	<b>Calculated MW:</b> 759 aa, 86 kDa	
	<b>Observed MW:</b> 92-100 kDa	

## Applications

<b>Tested Applications:</b> WB, ELISA	<b>Positive Controls:</b> WB : HEK-293T cells, HeLa cells, A549 cells, Jurkat cells
<b>Species Specificity:</b> human	

## Background Information

GTPase Regulator Associated with Focal Adhesion Kinase (GRAF), also known as Rho GTPase activating protein 26 (ARHGAP26), is a GTPase-activating protein and inhibits the activity of Rho GTPases by promoting the hydrolytic ability of Rho GTPases. GRAF enhances the hydrolysis of GTPases and converts GTPases from an active form to an inactive form, thereby inhibiting signaling transduction. Deletion and mutation of ARHGAP26 can lead to promyelocytic leukemia, suggesting tumor suppressive activity of ARHGAP26. ARHGAP26 was downregulated in glioblastoma and associated with cell proliferation and migration (PMID: 10908648, PMID: 17611651, PMID: 31004081).

## Storage

**Storage:**  
Store at -20°C. Stable for one year after shipment.  
**Storage Buffer:**  
PBS with 0.02% sodium azide and 50% glycerol pH 7.3.  
Aliquoting is unnecessary for -20°C storage

\*\*\* 20ul sizes contain 0.1% BSA

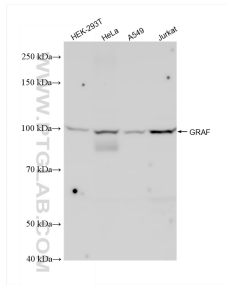
For technical support and original validation data for this product please contact:

T: 1 (888) 4PTGLAB (1-888-478-4522) (toll free in USA), or 1(312) 455-8498 (outside USA)

E: [proteintech@ptglab.com](mailto:proteintech@ptglab.com)  
W: [ptglab.com](http://ptglab.com)

This product is exclusively available under Proteintech Group brand and is not available to purchase from any other manufacturer.

## Selected Validation Data



Various lysates were subjected to SDS PAGE followed by western blot with 83206-1-RR (GRAF antibody) at dilution of 1:1000 incubated at room temperature for 1.5 hours.