

For Research Use Only

# GRAF Recombinant antibody, PBS Only (Detector)

Catalog Number: 83206-1-PBS



## Basic Information

<b>Catalog Number:</b> 83206-1-PBS	<b>GenBank Accession Number:</b> BC068555	<b>Purification Method:</b> Protein A purification
<b>Size:</b> 100ug, Concentration: 1 mg/ml by Nanodrop;	<b>GeneID (NCBI):</b> 23092	<b>CloneNo.:</b> 240086A11
<b>Source:</b> Rabbit	<b>UNIPROT ID:</b> Q9UNA1	
<b>Isotype:</b> IgG	<b>Full Name:</b> Rho GTPase activating protein 26	
<b>Immunogen Catalog Number:</b> AG12008	<b>Calculated MW:</b> 759 aa, 86 kDa	
	<b>Observed MW:</b> 92-100 kDa	

## Applications

**Tested Applications:**  
WB, Cytometric bead array, Indirect ELISA

**Species Specificity:**  
human

## Product Information

83206-1-PBS targets GRAF as part of a matched antibody pair:

MP00157-1: 83206-2-PBS capture and 83206-1-PBS detection (validated in Cytometric bead array)

Unconjugated rabbit recombinant monoclonal antibody in PBS only (BSA and azide free) storage buffer at a concentration of 1 mg/mL, ready for conjugation. Created using Proteintech's proprietary in-house recombinant technology. Recombinant production enables unrivalled batch-to-batch consistency, easy scale-up, and future security of supply.

This conjugation ready format makes antibodies ideal for use in many applications including: ELISAs, multiplex assays requiring matched pairs, mass cytometry, and multiplex imaging applications. Antibody use should be optimized by the end user for each application and assay.

## Background Information

GTPase Regulator Associated with Focal Adhesion Kinase (GRAF), also known as Rho GTPase activating protein 26 (ARHGAP26), is a GTPase-activating protein and inhibits the activity of Rho GTPases by promoting the hydrolytic ability of Rho GTPases. GRAF enhances the hydrolysis of GTPases and converts GTPases from an active form to an inactive form, thereby inhibiting signaling transduction. Deletion and mutation of ARHGAP26 can lead to promyelocytic leukemia, suggesting tumor suppressive activity of ARHGAP26. ARHGAP26 was downregulated in glioblastoma and associated with cell proliferation and migration (PMID: 10908648, PMID: 17611651, PMID: 31004081).

## Storage

**Storage:**  
Store at -80°C.  
**Storage Buffer:**  
PBS Only

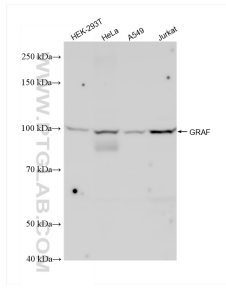
For technical support and original validation data for this product please contact:

T: 1 (888) 4PTGLAB (1-888-478-4522) (toll free in USA), or 1(312) 455-8498 (outside USA)

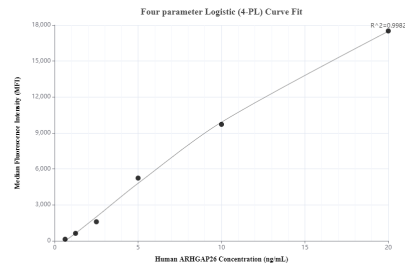
E: [proteintech@ptglab.com](mailto:proteintech@ptglab.com)  
W: [ptglab.com](http://ptglab.com)

**This product is exclusively available under Proteintech Group brand and is not available to purchase from any other manufacturer.**

## Selected Validation Data



Various lysates were subjected to SDS PAGE followed by western blot with 83206-1-RR (GRAF antibody) at dilution of 1:1000 incubated at room temperature for 1.5 hours. This data was developed using the same antibody clone with 83206-1-PBS in a different storage buffer formulation.



Cytometric bead array standard curve of MP00157-1, ARHGAP26 Recombinant Matched Antibody Pair, PBS Only. Capture antibody: 83206-2-PBS. Detection antibody: 83206-1-PBS. Standard: Ag12008. Range: 0.625-20 ng/mL.