

For Research Use Only

# KLF5 Recombinant antibody, PBS Only (Detector)

Catalog Number:83205-2-PBS



## Basic Information

<b>Catalog Number:</b> 83205-2-PBS	<b>GenBank Accession Number:</b> BC042131	<b>Purification Method:</b> Protein A purification
<b>Size:</b> 100ug , Concentration: 1mg/ml by Nanodrop;	<b>GeneID (NCBI):</b> 688	<b>CloneNo.:</b> 230509C5
<b>Source:</b> Rabbit	<b>UNIPROT ID:</b> Q13887	
<b>Isotype:</b> IgG	<b>Full Name:</b> Kruppel-like factor 5 (intestinal)	
<b>Immunogen Catalog Number:</b> AG15267	<b>Calculated MW:</b> 457 aa, 51 kDa	

## Applications

**Tested Applications:**  
Cytometric bead array, Sandwich ELISA, Indirect ELISA, Sample test

**Species Specificity:**  
human

## Product Information

83205-2-PBS targets KLF5 as part of a matched antibody pair:

MP00155-2: 83205-1-PBS capture and 83205-2-PBS detection (validated in Cytometric bead array, Sandwich ELISA)

Unconjugated rabbit recombinant monoclonal antibody in PBS only (BSA and azide free) storage buffer at a concentration of 1 mg/mL, ready for conjugation. Created using Proteintech's proprietary in-house recombinant technology. Recombinant production enables unrivalled batch-to-batch consistency, easy scale-up, and future security of supply.

This conjugation ready format makes antibodies ideal for use in many applications including: ELISAs, multiplex assays requiring matched pairs, mass cytometry, and multiplex imaging applications. Antibody use should be optimized by the end user for each application and assay.

## Storage

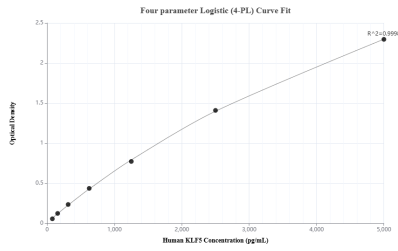
**Storage:**  
Store at -80°C.

**Storage Buffer:**  
PBS Only

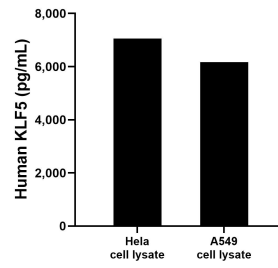
For technical support and original validation data for this product please contact:  
T: 1 (888) 4PTGLAB (1-888-478-4522) (toll free in USA), or 1(312) 455-8498 (outside USA) E: [proteintech@ptglab.com](mailto:proteintech@ptglab.com) W: [ptglab.com](http://ptglab.com)

This product is exclusively available under Proteintech Group brand and is not available to purchase from any other manufacturer.

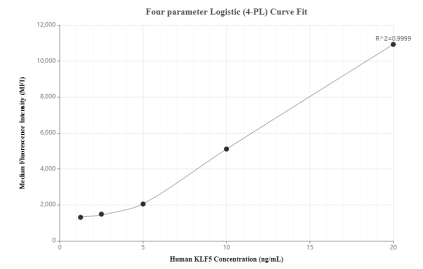
## Selected Validation Data



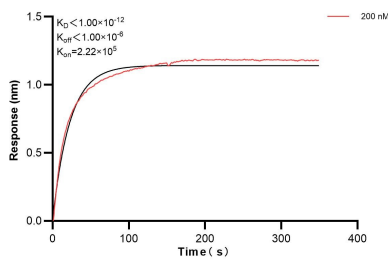
Sandwich ELISA standard curve of MP00155-2, Human KLF5 Recombinant Matched Antibody Pair - PBS only. 83205-1-PBS was coated to a plate as the capture antibody and incubated with serial dilutions of standard Ag15267. 83205-2-PBS was HRP conjugated as the detection antibody. Range: 78.1-5000 pg/mL



Hela and A549 cell lysates were measured. The human KLF5 concentration of detected samples was determined to be 7,055.7 pg/mL (based on a 3.2 mg/mL extract load) in Hela cell lysate and 6,173.2 pg/mL (based on a 2.2 mg/mL extract load) in A549 cell lysate.



Cytometric bead array standard curve of MP00155-2, KLF5 Recombinant Matched Antibody Pair, PBS Only. Capture antibody: 83205-1-PBS. Detection antibody: 83205-2-PBS. Standard: Ag15267. Range: 1.25-20 ng/mL



Biolayer interferometry (BLI) kinetic assay of 83205-2-PBS against Human KLF5 was performed. The affinity constant is below 1 pM.