

For Research Use Only

# CEACAM6 Recombinant antibody

Catalog Number: 83203-5-RR



## Basic Information

**Catalog Number:**

83203-5-RR

**Size:**

100ul , Concentration: 700 ug/ml by Nanodrop;

**Source:**

Rabbit

**Isotype:**

IgG

**GenBank Accession Number:**

BC005008

**GeneID (NCBI):**

4680

**UNIPROT ID:**

P40199

**Full Name:**

carcinoembryonic antigen-related cell adhesion molecule 6 (non-specific cross reacting antigen)

**Calculated MW:**

37 kDa

**Observed MW:**

40-100 kDa

**Purification Method:**

Protein A purification

**CloneNo.:**

230475D5

**Recommended Dilutions:**

WB 1:2000-1:14000

## Applications

**Tested Applications:**

WB, ELISA

**Species Specificity:**

human

**Positive Controls:**

WB : A549 cells, HT-29 cells

## Background Information

CEACAM6, also known as CD66c, is a glycosylphosphatidylinositol (GPI)-linked cell surface protein that belongs to the CEACAM family of the immunoglobulin superfamily (PMID: 23903773). It is normally expressed on the surface of myeloid and epithelial surfaces and upregulated preferentially at the apical/luminal membranes of many tumors (PMID: 27595061; 35082925). CEACAM6 plays an important role in cell adhesion, proliferation, tumorigenesis, metastasis, and immunity (PMID: 31797958).

## Storage

**Storage:**

Store at -20°C. Stable for one year after shipment.

**Storage Buffer:**

PBS with 0.02% sodium azide and 50% glycerol pH 7.3.

Aliquoting is unnecessary for -20°C storage

**\*\*\* 20ul sizes contain 0.1% BSA**

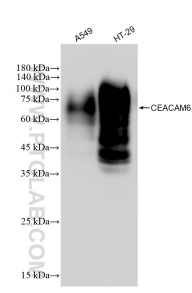
For technical support and original validation data for this product please contact:

T: 1 (888) 4PTGLAB (1-888-478-4522) (toll free in USA), or 1(312) 455-8498 (outside USA)

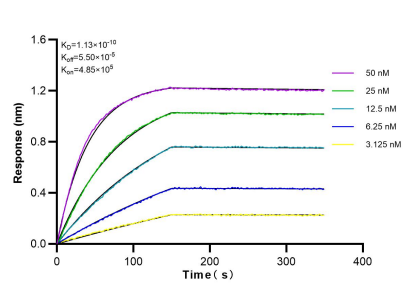
E: proteintech@ptglab.com  
W: ptglab.com

**This product is exclusively available under Proteintech Group brand and is not available to purchase from any other manufacturer.**

## Selected Validation Data



Various lysates were subjected to SDS PAGE followed by western blot with 83203-5-RR (CEACAM6 antibody) at dilution of 1:7000 incubated at room temperature for 1.5 hours.



Biolayer interferometry (BLI) kinetic assays of 83203-5-RR against Human CEACAM6 were performed. The affinity constant is 0.113 nM.