

For Research Use Only

ATP6 Recombinant antibody

Catalog Number:83201-3-RR



Basic Information

Catalog Number: 83201-3-RR	GenBank Accession Number: J01415	Purification Method: Protein A purification
Size: 100ul , Concentration: 700 ug/ml by Nanodrop;	GeneID (NCBI): 4508	CloneNo.: 240041B6
Source: Rabbit	UNIPROT ID: P00846	Recommended Dilutions: IF-P 1:175-1:700 IF/ICC 1:150-1:600
Isotype: IgG	Full Name: ATP synthase 6; ATPase subunit 6	
	Calculated MW: 25 kDa	

Applications

Tested Applications: IF/ICC, IF-P, FC (Intra), ELISA	Positive Controls: IF-P : rat brain tissue, IF/ICC : HeLa cells,
Species Specificity: human	

Background Information

ATP synthase, also known as FoF1 complex, is a critical mitochondrial OXPHOS enzyme involved in the regulation of mitochondrial ATP production and in the maintenance of the mitochondrial membrane potential. It is composed of three components (F1, Fo and the peripheral stalk). F1, the soluble catalytic core, is above the membrane, inside the matrix of the mitochondria; consists of 5 different subunits (alpha, beta, gamma, delta, and epsilon); Fo, comprising the proton channel, is within the membrane; Fo seems to have nine subunits (a, b, c, d, e, f, g, F6 and 8). ATP6 is the a subunit of Fo region.

Storage

Storage:
Store at -20°C. Stable for one year after shipment.
Storage Buffer:
PBS with 0.02% sodium azide and 50% glycerol pH 7.3.
Aliquoting is unnecessary for -20°C storage

*** 20ul sizes contain 0.1% BSA

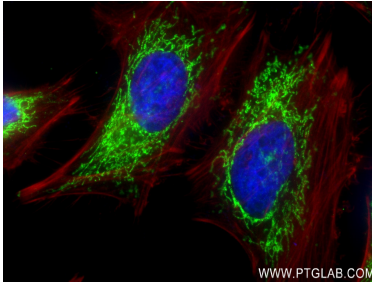
For technical support and original validation data for this product please contact:

T: 1 (888) 4PTGLAB (1-888-478-4522) (toll free in USA), or 1(312) 455-8498 (outside USA)

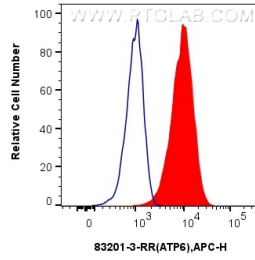
E: proteintech@ptglab.com
W: ptglab.com

This product is exclusively available under Proteintech Group brand and is not available to purchase from any other manufacturer.

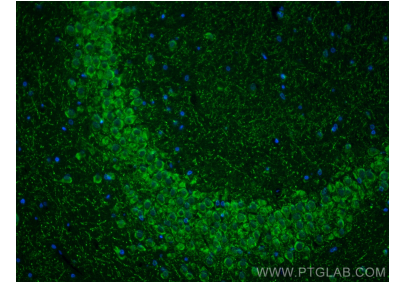
Selected Validation Data



Immunofluorescent analysis of (4% PFA) fixed HeLa cells using ATP6 antibody (83201-3-RR, Clone: 240041B6) at dilution of 1:300 and CoraLite® 488-Conjugated AffiniPure Goat Anti-Mouse IgG(H+L) (SA00013-1), CL594-Phalloidin (red).



1×10^6 U2OS cells were intracellularly stained with 0.25 ug ATP6 Recombinant antibody (83201-3-RR, Clone:240041B6) and APC-Conjugated AffiniPure Goat Anti-Rabbit IgG(H+L)(red), or 0.25 ug Isotype Control (blue). Cells were fixed with 4% PFA and permeabilized with Flow Cytometry Perm Buffer (PF00011-C).



Immunofluorescent analysis of (4% PFA) fixed paraffin-embedded rat brain tissue using ATP6 antibody (83201-3-RR, Clone: 240041B6) at dilution of 1:350 and Multi-rAb CoraLite® Plus 488-Goat Anti-Rabbit Recombinant Secondary Antibody (H+L) (RGAR002). Heat mediated antigen retrieval with Tris-EDTA buffer (pH 9.0).