

For Research Use Only

Mouse MIF Recombinant antibody, PBS Only (Capture)

Catalog Number: 83199-2-PBS



Basic Information

Catalog Number: 83199-2-PBS	GenBank Accession Number: NM_010798.2	Purification Method: Protein A purification
Size: 100ug, Concentration: 1mg/ml by Nanodrop;	GeneID (NCBI): 17319	CloneNo.: 230529F2
Source: Rabbit	UNIPROT ID: P34884	
Isotype: IgG	Full Name: macrophage migration inhibitory factor	
	Calculated MW: 13KD	
	Observed MW: 13 kDa	

Applications

Tested Applications:
WB, IF/ICC, FC (Intra), Cytometric bead array, Indirect ELISA

Species Specificity:
human, mouse, rat

Product Information

83199-2-PBS targets MIF as part of a matched antibody pair:

MP00282-1: 83199-2-PBS capture and 83199-1-PBS detection (validated in Cytometric bead array)

Unconjugated rabbit recombinant monoclonal antibody in PBS only (BSA and azide free) storage buffer at a concentration of 1 mg/mL, ready for conjugation. Created using Proteintech's proprietary in-house recombinant technology. Recombinant production enables unrivalled batch-to-batch consistency, easy scale-up, and future security of supply.

This conjugation ready format makes antibodies ideal for use in many applications including: ELISAs, multiplex assays requiring matched pairs, mass cytometry, and multiplex imaging applications. Antibody use should be optimized by the end user for each application and assay.

Background Information

Macrophage migration inhibitory factor (MIF) is a homo-trimeric protein that acts as a pleiotropic pro-inflammatory cytokine. It is involved in various functions, including leukocyte recruitment, inflammation, immune responses, cell proliferation, tumorigenesis, and counter-regulation of glucocorticoids (GC). MIF is a highly conserved protein of 12.5 kDa, with evolutionarily ancient homologues in plants, protozoans, nematodes, and invertebrates.

Storage

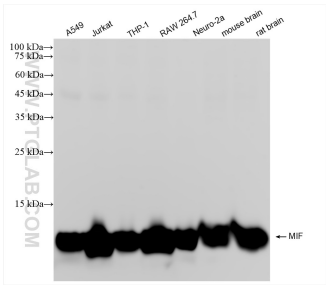
Storage:
Store at -80°C.

Storage Buffer:
PBS Only

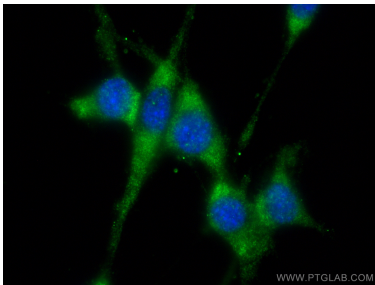
For technical support and original validation data for this product please contact:
T: 1 (888) 4PTGLAB (1-888-478-4522) (toll free in USA), or 1(312) 455-8498 (outside USA)
E: proteintech@ptglab.com
W: ptglab.com

This product is exclusively available under Proteintech Group brand and is not available to purchase from any other manufacturer.

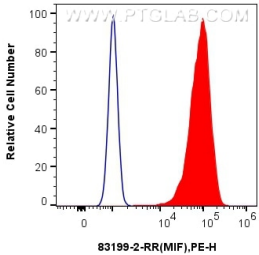
Selected Validation Data



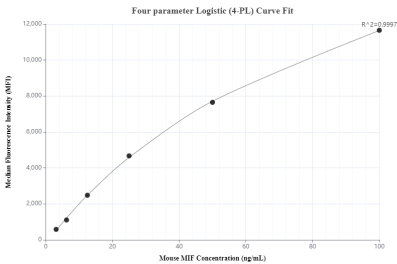
Various lysates were subjected to SDS PAGE followed by western blot with 83199-2-RR (MIF antibody) at dilution of 1:20000 incubated at room temperature for 1.5 hours. This data was developed using the same antibody clone with 83199-2-PBS in a different storage buffer formulation.



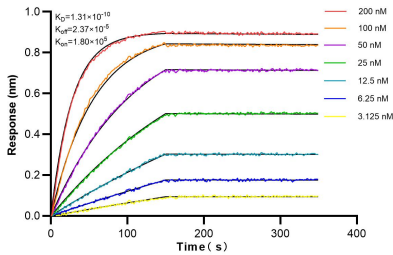
Immunofluorescent analysis of (-20°C Ethanol) fixed NIH/3T3 cells using MIF antibody (83199-2-RR, Clone: 230529F2) at dilution of 1:400 and Multi-rAb CoraLite® Plus 488-Goat Anti-Rabbit Recombinant Secondary Antibody (H+L) (RGAR002). This data was developed using the same antibody clone with 83199-2-PBS in a different storage buffer formulation.



1x10⁶ Neuro-2a cells were intracellularly stained with 0.25 ug MIF Recombinant antibody (83199-2-RR, Clone:230529F2) and PE-Conjugated AffiniPure Goat Anti-Rabbit IgG(H+L)(red), or 0.25 ug Isotype Control (blue). Cells were fixed with 4% PFA and permeabilized with Flow Cytometry Perm Buffer (PF00011-C). This data was developed using the same antibody clone with 83199-2-PBS in a different storage buffer formulation.



Cytometric bead array standard curve of MP00282-1, Mouse MIF Recombinant Matched Antibody Pair, PBS Only. Capture antibody: 83199-2-PBS. Detection antibody: 83199-1-PBS. Standard: Eg0574. Range: 3.13-100 ng/mL



Biolayer interferometry (BLI) kinetic assays of 83199-2-RR against Mouse MIF were performed. The affinity constant is 0.131 nM.