

For Research Use Only

# HIRA Recombinant antibody, PBS Only (Detector)

Catalog Number: 83194-1-PBS



## Basic Information

<b>Catalog Number:</b> 83194-1-PBS	<b>GenBank Accession Number:</b> NM_003325	<b>Purification Method:</b> Protein A purification
<b>Size:</b> 100ug, Concentration: 1mg/ml by Nanodrop;	<b>GeneID (NCBI):</b> 7290	<b>CloneNo.:</b> 240006A7
<b>Source:</b> Rabbit	<b>UNIPROT ID:</b> P54198	
<b>Isotype:</b> IgG	<b>Full Name:</b> HIR histone cell cycle regulation defective homolog A (S. cerevisiae)	
<b>Immunogen Catalog Number:</b> AG34439	<b>Calculated MW:</b> 112 kDa	

## Applications

**Tested Applications:**  
Cytometric bead array, Sandwich ELISA, Indirect ELISA, Sample test

**Species Specificity:**  
human

## Product Information

83194-1-PBS targets HIRA as part of a matched antibody pair:

MP00291-1: 83194-3-PBS capture and 83194-1-PBS detection (validated in Cytometric bead array, Sandwich ELISA)

MP00291-2: 83194-2-PBS capture and 83194-1-PBS detection (validated in Cytometric bead array)

Unconjugated rabbit recombinant monoclonal antibody in PBS only (BSA and azide free) storage buffer at a concentration of 1 mg/mL, ready for conjugation. Created using Proteintech's proprietary in-house recombinant technology. Recombinant production enables unrivalled batch-to-batch consistency, easy scale-up, and future security of supply.

This conjugation ready format makes antibodies ideal for use in many applications including: ELISAs, multiplex assays requiring matched pairs, mass cytometry, and multiplex imaging applications. Antibody use should be optimized by the end user for each application and assay.

## Storage

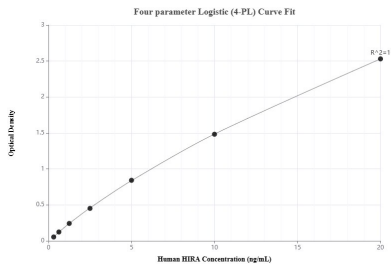
**Storage:**  
Store at -80°C.

**Storage Buffer:**  
PBS Only

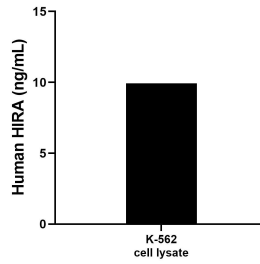
For technical support and original validation data for this product please contact:  
T: 1 (888) 4PTGLAB (1-888-478-4522) (toll free in USA), or 1(312) 455-8498 (outside USA) E: proteintech@ptglab.com W: ptglab.com

This product is exclusively available under Proteintech Group brand and is not available to purchase from any other manufacturer.

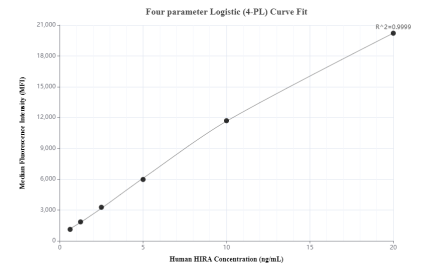
## Selected Validation Data



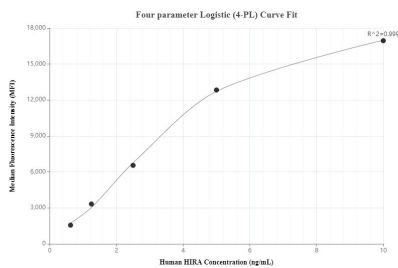
Sandwich ELISA standard curve of MP00291-1, Human HIRA Recombinant Matched Antibody Pair - PBS only. 83194-3-PBS was coated to a plate as the capture antibody and incubated with serial dilutions of standard Ag34439. 83194-1-PBS was HRP conjugated as the detection antibody. Range: 0.313-20 ng/mL



K-562 cell lysates were measured. The human HARS concentration of detected samples was determined to be 9.93 ng/mL (based on a 4.5 mg/mL extract load) in K-562 cell lysate.



Cytometric bead array standard curve of MP00291-1, HIRA Recombinant Matched Antibody Pair, PBS Only. Capture antibody: 83194-3-PBS. Detection antibody: 83194-1-PBS. Standard: Ag34439. Range: 0.625-20 ng/mL



Cytometric bead array standard curve of MP00291-2, HIRA Recombinant Matched Antibody Pair, PBS Only. Capture antibody: 83194-2-PBS. Detection antibody: 83194-1-PBS. Standard: Ag34439. Range: 0.625-10 ng/mL