

For Research Use Only

ATP1A1 Recombinant antibody

Catalog Number:83191-6-RR



Basic Information

Catalog Number: 83191-6-RR	GenBank Accession Number: BC050359	Purification Method: Protein A purification
Size: 100ul , Concentration: 1000 ug/ml by Nanodrop;	GeneID (NCBI): 476	CloneNo.: 240160E12
Source: Rabbit	ENSEMBL Gene ID: ENSG00000163399	Recommended Dilutions: WB 1:5000-1:50000 IF/ICC 1:250-1:1000
Isotype: IgG	UNIPROT ID: P05023	
Immunogen Catalog Number: AG5763	Full Name: ATPase, Na ⁺ /K ⁺ transporting, alpha 1 polypeptide	
	Calculated MW: 113 kDa	
	Observed MW: 100-110 kDa	

Applications

Tested Applications: WB, IF/ICC, FC (Intra), ELISA	Positive Controls:
Species Specificity: human, mouse	WB : unboiled A431 cells, unboiled HeLa cells, unboiled RAW 264.7 cells
	IF/ICC : A431 cells, HEK-293 cells

Background Information

ATP1A1 is the catalytic component of Na⁺/K⁺-ATPase which is a membrane bound enzyme primarily involved in generation of Na⁺ and K⁺ gradients across plasma membranes and in determination of cytoplasmic Na⁺ levels. ATP1A1 is a ubiquitously expressed membrane protein and often used as the marker or internal control for plasma membrane protein. For optimal WB detection of this membrane protein, we recommend to avoid boiling the sample after lysis.

Storage

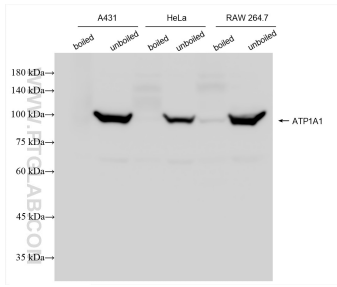
Storage:
Store at -20°C. Stable for one year after shipment.
Storage Buffer:
PBS with 0.02% sodium azide and 50% glycerol pH 7.3.
Aliquoting is unnecessary for -20°C storage

*** 20ul sizes contain 0.1% BSA

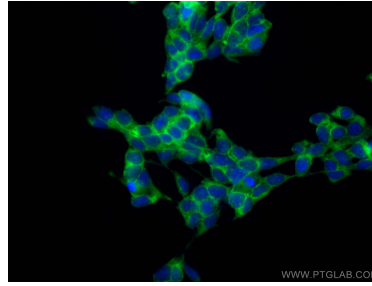
For technical support and original validation data for this product please contact:
T: 1 (888) 4PTGLAB (1-888-478-4522) (toll free in USA), or 1(312) 455-8498 (outside USA)
E: proteintech@ptglab.com
W: ptglab.com

This product is exclusively available under Proteintech Group brand and is not available to purchase from any other manufacturer.

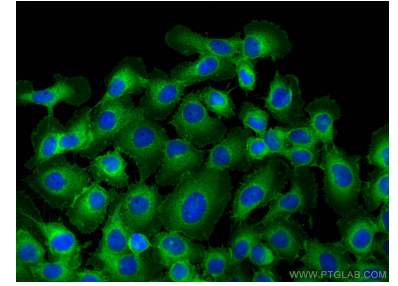
Selected Validation Data



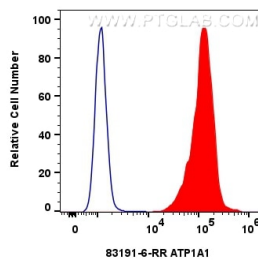
Various lysates were subjected to SDS PAGE followed by western blot with 83191-6-RR (ATP1A1 antibody) at dilution of 1:10000 incubated at room temperature for 1.5 hours.



Immunofluorescent analysis of (-20°C Ethanol) fixed HEK-293 cells using ATP1A1 antibody (83191-6-RR, Clone: 240160E12) at dilution of 1:1000 and CoraLite®488-Conjugated Goat Anti-Rabbit IgG(H+L) (SA00013-2).



Immunofluorescent analysis of (-20°C Methanol) fixed A431 cells using ATP1A1 antibody (83191-6-RR, Clone: 240160E12) at dilution of 1:500 and CoraLite®488-Conjugated Goat Anti-Rabbit IgG(H+L) (SA00013-2).



1×10^6 HEK-293 cells were intracellularly stained with 0.4 μ g ATP1A1 Recombinant antibody (83191-6-RR, Clone:240160E12) and CoraLite®488-Conjugated Goat Anti-Rabbit IgG(H+L) (SA00013-2) (red), or 0.4 μ g Isotype Control (blue). Cells were fixed with 4% PFA and permeabilized with Flow Cytometry Perm Buffer (PF00011-C).