

For Research Use Only

ATP1A1 Recombinant antibody

Catalog Number:83191-5-RR



Basic Information

Catalog Number: 83191-5-RR	GenBank Accession Number: BC050359	Purification Method: Protein A purification
Size: 100ul , Concentration: 1000 ug/ml by Nanodrop;	GeneID (NCBI): 476	CloneNo.: 240160B5
Source: Rabbit	ENSEMBL Gene ID: ENSG00000163399	Recommended Dilutions: IF/ICC 1:500-1:2000
Isotype: IgG	UNIPROT ID: P05023	
Immunogen Catalog Number: AG5763	Full Name: ATPase, Na ⁺ /K ⁺ transporting, alpha 1 polypeptide	
	Calculated MW: 113 kDa	

Applications

Tested Applications: IF/ICC, FC (Intra), ELISA	Positive Controls: IF/ICC : A431 cells,
Species Specificity: human	

Background Information

ATP1A1 is the catalytic component of Na⁺/K⁺-ATPase which is a membrane bound enzyme primarily involved in generation of Na⁺ and K⁺ gradients across plasma membranes and in determination of cytoplasmic Na⁺ levels. ATP1A1 is a ubiquitously expressed membrane protein and often used as the marker or internal control for plasma membrane protein.

Storage

Storage:
Store at -20°C. Stable for one year after shipment.
Storage Buffer:
PBS with 0.02% sodium azide and 50% glycerol pH 7.3.
Aliquoting is unnecessary for -20°C storage

*** 20ul sizes contain 0.1% BSA

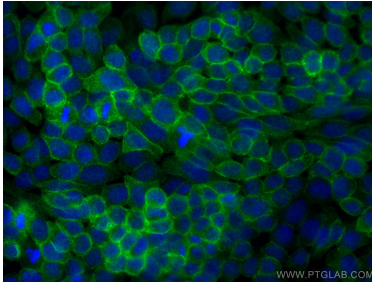
For technical support and original validation data for this product please contact:

T: 1 (888) 4PTGLAB (1-888-478-4522) (toll free in USA), or 1(312) 455-8498 (outside USA)

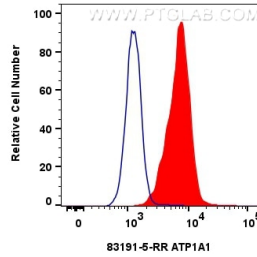
E: proteintech@ptglab.com
W: ptglab.com

This product is exclusively available under Proteintech Group brand and is not available to purchase from any other manufacturer.

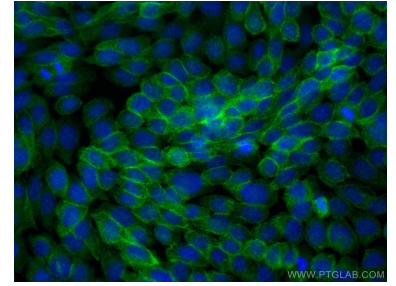
Selected Validation Data



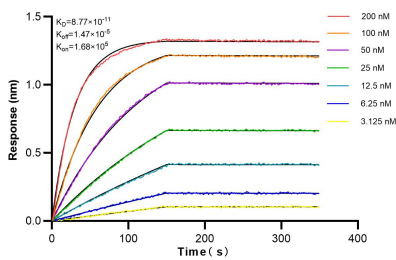
Immunofluorescent analysis of (-20°C Methanol) fixed A431 cells using ATP1A1 antibody (83191-5-RR, Clone: 240160B5) at dilution of 1:1000 and CoraLite®488-Conjugated Goat Anti-Rabbit IgG(H+L) (SA00013-2).



1x10⁶ HEK-293 cells were intracellularly stained with 0.2 ug ATP1A1 Recombinant antibody (83191-5-RR, Clone:240160B5) and CoraLite®488-Conjugated Goat Anti-Rabbit IgG(H+L) (SA00013-2) (red), or 0.2 ug Isotype Control (blue). Cells were fixed with 4% PFA and permeabilized with Flow Cytometry Perm Buffer (PF00011-C).



Immunofluorescent analysis of (-20°C Methanol) fixed A431 cells using ATP1A1 antibody (83191-5-RR, Clone: 240160B5) at dilution of 1:1000 and CoraLite®488-Conjugated Goat Anti-Rabbit IgG(H+L) (SA00013-2).



Bi-layer interferometry (BLI) kinetic assays of 83191-5-RR against Human ATP1A1 were performed. The affinity constant is 87.7 pM.