

For Research Use Only

MMP13 Recombinant antibody, PBS Only

Catalog Number:83188-4-PBS



Basic Information

Catalog Number: 83188-4-PBS	GenBank Accession Number: BC074808	Purification Method: Protein A purification
Size: 100ug , Concentration: 1 mg/ml by Nanodrop;	GeneID (NCBI): 4322	CloneNo.: 240060A1
Source: Rabbit	UNIPROT ID: P45452	
Isotype: IgG	Full Name: matrix metalloproteinase 13	
Immunogen Catalog Number: AG34892	Calculated MW: 471 aa, 54 kDa	
	Observed MW: 70 kDa, 54 kDa	

Applications

Tested Applications:
WB, FC (Intra), ELISA

Species Specificity:
human

Background Information

MMP-13(Matrix metalloproteinase-13), cleaves type I collagen and was previously thought to be the rodent analogue of human interstitial MMP-1. MMP-13 is found in hypertrophic and calcifying cartilage of mammalian growth plate. The bands seen with rat MMP-13 are consistent with a 59-kDa latent form and a 43-kDa active form reported for this enzyme, along with a smaller band at approximately 30 kDa(PMID:10771523). It also can be detected 3 bands that the glycosylated proMMP-13 (70 kDa), unglycosylated form (55 kDa), and active MMP-13 enzyme (40kDa) by western blot(PMID:18332263).

Storage

Storage:
Store at -80°C.

Storage Buffer:
PBS Only

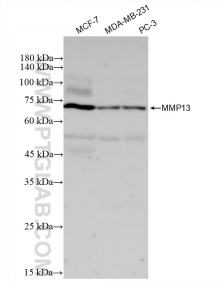
For technical support and original validation data for this product please contact:

T: 1 (888) 4PTGLAB (1-888-478-4522) (toll free in USA), or 1(312) 455-8498 (outside USA)

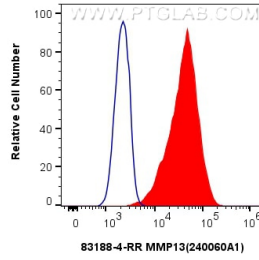
E: proteintech@ptglab.com
W: ptglab.com

This product is exclusively available under Proteintech Group brand and is not available to purchase from any other manufacturer.

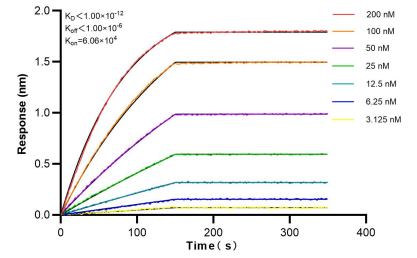
Selected Validation Data



Various lysates were subjected to SDS PAGE followed by western blot with 83188-4-RR (MMP13 antibody) at dilution of 1:3000 incubated at room temperature for 1.5 hours. This data was developed using the same antibody clone with 83188-4-PBS in a different storage buffer formulation.



1×10^6 MCF-7 cells were intracellularly stained with 0.25 ug MMP13 Recombinant antibody (83188-4-RR, Clone:240060A1) and CoraLite®488-Conjugated Goat Anti-Rabbit IgG(H+L) (SA00013-2)(red), or 0.25 ug Rabbit IgG Isotype Control Recombinant Antibody (98136-1-RR, Clone: 240953C9) (blue). Cells were fixed with 4% PFA and permeabilized with Flow Cytometry Perm Buffer (PF00011-C). This data was developed using the same antibody clone with 83188-4-PBS in a



Bi-layer interferometry (BLI) kinetic assays of 83188-4-RR against Human MMP13 were performed. The affinity constant is below 1 pM.