

For Research Use Only

MMP13 Recombinant antibody

Catalog Number: 83188-2-RR



Basic Information

Catalog Number: 83188-2-RR	GenBank Accession Number: BC074808	Purification Method: Protein A purification
Size: 100ul , Concentration: 1000 ug/ml by Nanodrop;	GeneID (NCBI): 4322	CloneNo.: 240060B10
Source: Rabbit	UNIPROT ID: P45452	Recommended Dilutions: IF/ICC 1:125-1:500
Isotype: IgG	Full Name: matrix metalloproteinase 13	
Immunogen Catalog Number: AG34892	Calculated MW: 471 aa, 54 kDa	
	Observed MW: 70 kDa, 54 kDa	

Applications

Tested Applications: IF/ICC, FC (Intra), ELISA	Positive Controls: IF/ICC : MCF-7 cells,
Species Specificity: human	

Background Information

MMP-13(Matrix metalloproteinase-13), cleaves type I collagen and was previously thought to be the rodent analogue of human interstitial MMP-1. MMP-13 is found in hypertrophic and calcifying cartilage of mammalian growth plate. The bands seen with rat MMP-13 are consistent with a 59-kDa latent form and a 43-kDa active form reported for this enzyme, along with a smaller band at approximately 30 kDa(PMID:10771523).

Storage

Storage:
Store at -20°C. Stable for one year after shipment.
Storage Buffer:
PBS with 0.02% sodium azide and 50% glycerol pH 7.3.
Aliquoting is unnecessary for -20°C storage

*** 20ul sizes contain 0.1% BSA

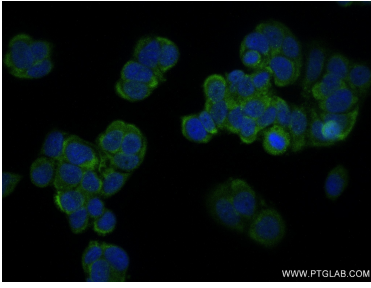
For technical support and original validation data for this product please contact:

T: 1 (888) 4PTGLAB (1-888-478-4522) (toll free in USA), or 1(312) 455-8498 (outside USA)

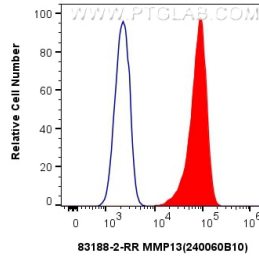
E: proteintech@ptglab.com
W: ptglab.com

This product is exclusively available under Proteintech Group brand and is not available to purchase from any other manufacturer.

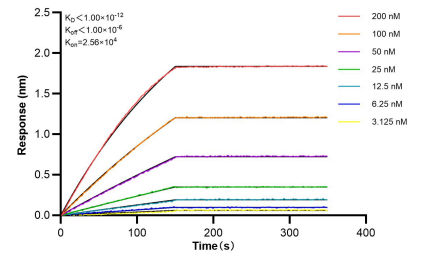
Selected Validation Data



Immunofluorescent analysis of (-20°C Methanol) fixed MCF-7 cells using MMP13 antibody (83188-2-RR, Clone: 240060B10) at dilution of 1:250 and CoraLite@488-Conjugated AffiniPure Goat Anti-Rabbit IgG(H+L) (SA00013-2).



1×10^6 MCF-7 cells were intracellularly stained with 0.25 μ g MMP13 Recombinant antibody (83188-2-RR, Clone:240060B10) and CoraLite@488-Conjugated Goat Anti-Rabbit IgG(H+L) (SA00013-2) (red), or 0.25 μ g Rabbit IgG Isotype Control Recombinant Antibody (98136-1-RR, Clone: 240953C9) (blue). Cells were fixed with 4% PFA and permeabilized with Flow Cytometry Perm Buffer (PF00011-C).



Biolayer interferometry (BLI) kinetic assays of 83188-2-RR against Human MMP13 were performed. The affinity constant is below 1 pM.