

For Research Use Only

MMP13 Recombinant antibody, PBS Only (Detector)

Catalog Number:83188-2-PBS



Basic Information

Catalog Number: 83188-2-PBS	GenBank Accession Number: BC074808	Purification Method: Protein A purification
Size: 100ug, Concentration: 1mg/ml by Nanodrop;	GeneID (NCBI): 4322	CloneNo.: 240060B10
Source: Rabbit	UNIPROT ID: P45452	
Isotype: IgG	Full Name: matrix metalloproteinase 13	
Immunogen Catalog Number: AG34892	Calculated MW: 471 aa, 54 kDa	
	Observed MW: 70 kDa, 54 kDa	

Applications

Tested Applications:
IF/ICC, FC (Intra), Cytometric bead array, Sandwich ELISA, Indirect ELISA

Species Specificity:
human

Product Information

83188-2-PBS targets MMP13 as part of a matched antibody pair:

MP00266-1: 83188-3-PBS capture and 83188-2-PBS detection (validated in Cytometric bead array, Sandwich ELISA)

MP00266-2: 83188-1-PBS capture and 83188-2-PBS detection (validated in Cytometric bead array)

Unconjugated rabbit recombinant monoclonal antibody in PBS only (BSA and azide free) storage buffer at a concentration of 1 mg/mL, ready for conjugation. Created using Proteintech's proprietary in-house recombinant technology. Recombinant production enables unrivalled batch-to-batch consistency, easy scale-up, and future security of supply.

This conjugation ready format makes antibodies ideal for use in many applications including: ELISAs, multiplex assays requiring matched pairs, mass cytometry, and multiplex imaging applications. Antibody use should be optimized by the end user for each application and assay.

Background Information

MMP-13(Matrix metalloproteinase-13), cleaves type I collagen and was previously thought to be the rodent analogue of human interstitial MMP-1. MMP-13 is found in hypertrophic and calcifying cartilage of mammalian growth plate. The bands seen with rat MMP-13 are consistent with a 59-kDa latent form and a 43-kDa active form reported for this enzyme, along with a smaller band at approximately 30 kDa(PMID:10771523).

Storage

Storage:
Store at -80°C.
Storage Buffer:
PBS Only

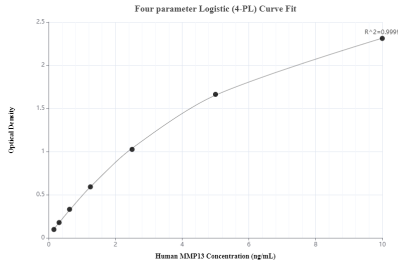
For technical support and original validation data for this product please contact:

T: 1 (888) 4PTGLAB (1-888-478-4522) (toll free in USA), or 1(312) 455-8498 (outside USA)

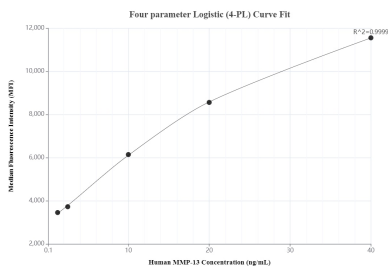
E: proteintech@ptglab.com
W: ptglab.com

This product is exclusively available under Proteintech Group brand and is not available to purchase from any other manufacturer.

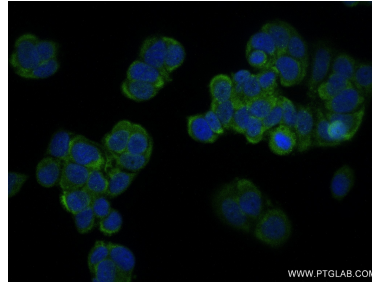
Selected Validation Data



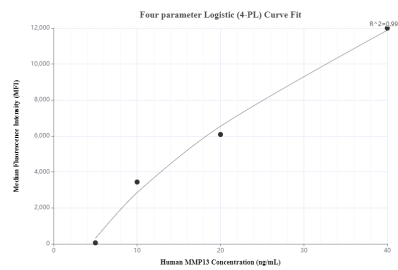
Sandwich ELISA standard curve of MP00266-1, MMP13 Recombinant Matched Antibody Pair, PBS Only. 83188-3-PBS was coated to a plate as the capture antibody and incubated with serial dilutions of standard Ag34892. 83188-2-PBS was HRP conjugated as the detection antibody. Range: 0.156-10 ng/mL



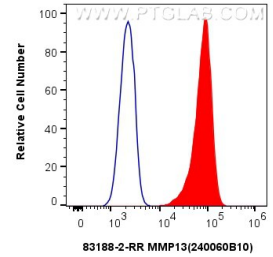
Cytometric bead array standard curve of MP00266-1, MMP13 Recombinant Matched Antibody Pair, PBS Only. PBS Only. Capture antibody: 83188-3-PBS. Detection antibody: 83188-2-PBS. Standard: Ag34892. Range: 5-40 ng/mL



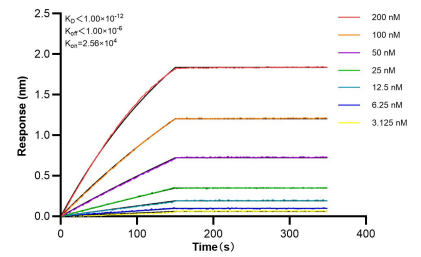
Immunofluorescent analysis of (-20°C Methanol) fixed MCF-7 cells using MMP13 antibody (83188-2-RR, Clone: 240060B10) at dilution of 1:250 and CoraLite@488-Conjugated AffiniPure Goat Anti-Rabbit IgG(H+L) (SA00013-2). This data was developed using the same antibody clone with 83188-2-PBS in a different storage buffer formulation.



Cytometric bead array standard curve of MP00266-2, MMP13 Recombinant Matched Antibody Pair, PBS Only. Capture antibody: 83188-1-PBS. Detection antibody: 83188-2-PBS. Standard: Ag34892. Range: 5-40 ng/mL



1x10⁶ MCF-7 cells were intracellularly stained with 0.25 ug MMP13 Recombinant antibody (83188-2-RR, Clone:240060B10) and CoraLite@488-Conjugated Goat Anti-Rabbit IgG(H+L) (SA00013-2)(red), or 0.25 ug Rabbit IgG Isotype Control Recombinant Antibody (98136-1-RR, Clone: 240953C9) (blue). Cells were fixed with 4% PFA and permeabilized with Flow Cytometry Perm Buffer (PF00011-C). This data was developed using the same antibody clone with 83188-2-PBS in a



Bi-layer interferometry (BLI) kinetic assays of 83188-2-RR against Human MMP13 were performed. The affinity constant is below 1 pM.