

For Research Use Only

# USP8 Recombinant antibody, PBS Only (Capture)

Catalog Number: 83172-2-PBS



## Basic Information

<b>Catalog Number:</b> 83172-2-PBS	<b>GenBank Accession Number:</b> BC110590	<b>Purification Method:</b> Protein A purification
<b>Size:</b> 100ug, Concentration: 1mg/ml by Nanodrop;	<b>GeneID (NCBI):</b> 9101	<b>CloneNo.:</b> 240016D3
<b>Source:</b> Rabbit	<b>UNIPROT ID:</b> P40818	
<b>Isotype:</b> IgG	<b>Full Name:</b> ubiquitin specific peptidase 8	
<b>Immunogen Catalog Number:</b> AG27143	<b>Calculated MW:</b> 1118 aa, 128 kDa	

## Applications

**Tested Applications:**  
WB, IF/ICC, FC (Intra), Cytometric bead array,  
Sandwich ELISA, Indirect ELISA, Sample test

**Species Specificity:**  
human

## Product Information

83172-2-PBS targets USP8 as part of a matched antibody pair:

MP00188-1: 83172-2-PBS capture and 83172-1-PBS detection (validated in Cytometric bead array, Sandwich ELISA)

MP00188-2: 83172-2-PBS capture and 83172-3-PBS detection (validated in Cytometric bead array)

Unconjugated rabbit recombinant monoclonal antibody in PBS only (BSA and azide free) storage buffer at a concentration of 1 mg/mL, ready for conjugation. Created using Proteintech's proprietary in-house recombinant technology. Recombinant production enables unrivalled batch-to-batch consistency, easy scale-up, and future security of supply.

This conjugation ready format makes antibodies ideal for use in many applications including: ELISAs, multiplex assays requiring matched pairs, mass cytometry, and multiplex imaging applications. Antibody use should be optimized by the end user for each application and assay.

## Storage

**Storage:**  
Store at -80°C.  
**Storage Buffer:**  
PBS Only

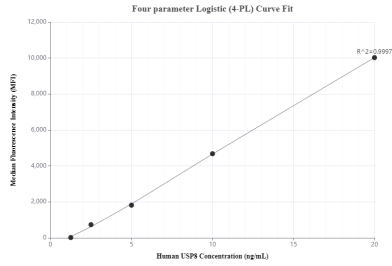
For technical support and original validation data for this product please contact:

T: 1 (888) 4PTGLAB (1-888-478-4522) (toll free  
in USA), or 1(312) 455-8498 (outside USA)

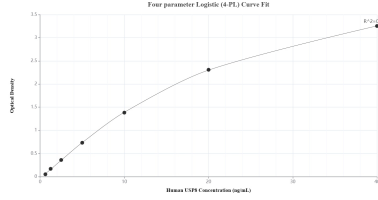
E: [proteintech@ptglab.com](mailto:proteintech@ptglab.com)  
W: [ptglab.com](http://ptglab.com)

**This product is exclusively available under Proteintech Group brand and is not available to purchase from any other manufacturer.**

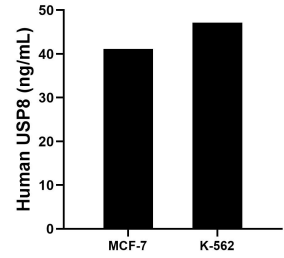
# Selected Validation Data



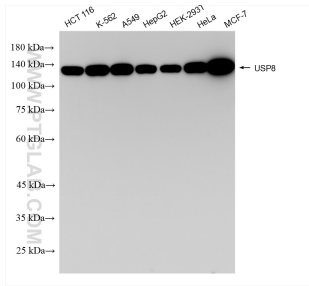
Cytometric bead array standard curve of MP00188-1, USP8 Recombinant Matched Antibody Pair, PBS Only. Capture antibody: 83172-2-PBS. Detection antibody: 83172-1-PBS. Standard: Ag27143. Range: 1.25-20 ng/mL



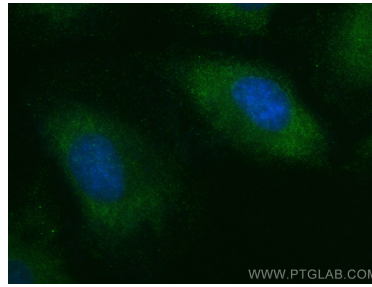
Sandwich ELISA standard curve of MP00188-1, Human USP8 Recombinant Matched Antibody Pair- PBS only. 83172-2-PBS was coated to a plate as the capture antibody and incubated with serial dilutions of standard Ag27143. 83172-1-PBS was HRP conjugated as the detection antibody. Range: 0.625-40 ng/mL



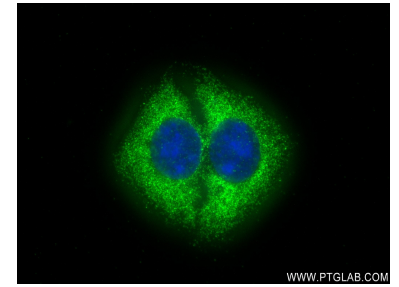
The mean USP8 concentration was determined to be 41.15 ng/mL in MCF-7 cell extract based on a 4.30 mg/mL extract load and 47.12 ng/mL in K-562 cell extract based on a 4.50 mg/mL extract load.



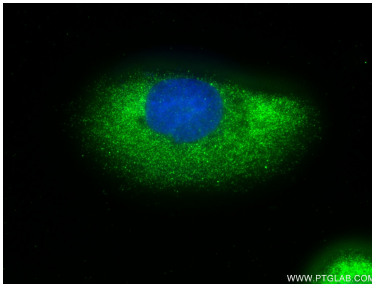
Various lysates were subjected to SDS PAGE followed by western blot with 83172-2-RR (USP8 antibody) at dilution of 1:10000 incubated at room temperature for 1.5 hours. This data was developed using the same antibody clone with 83172-2-PBS in a different storage buffer formulation.



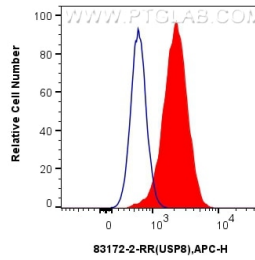
Immunofluorescent analysis of (-20°C Ethanol) fixed HeLa cells using USP8 antibody (83172-2-RR, Clone: 240016D3 ) at dilution of 1:1000 and CoraLite®488-Conjugated Goat Anti-Rabbit IgG(H+L) (SA00013-2). This data was developed using the same antibody clone with 83172-2-PBS in a different storage buffer formulation.



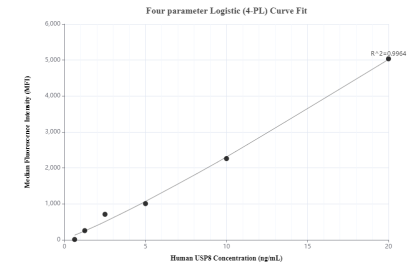
Immunofluorescent analysis of (4% PFA) fixed U2OS cells using USP8 antibody (83172-2-RR, Clone: 240016D3 ) at dilution of 1:250 and CoraLite®488-Conjugated AffiniPure Goat Anti-Rabbit IgG(H+L) (SA00013-2). This data was developed using the same antibody clone with 83172-2-PBS in a different storage buffer formulation.



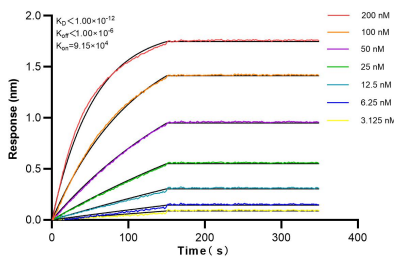
Immunofluorescent analysis of (4% PFA) fixed U2OS cells using USP8 antibody (83172-2-RR, Clone: 240016D3 ) at dilution of 1:250 and CoraLite®488-Conjugated AffiniPure Goat Anti-Rabbit IgG(H+L) (SA00013-2). This data was developed using the same antibody clone with 83172-2-PBS in a different storage buffer formulation.



1x10<sup>6</sup> A549 cells were intracellularly stained with 0.25 ug USP8 Recombinant antibody (83172-2-RR, Clone:240016D3) and APC-Conjugated AffiniPure Goat Anti-Rabbit IgG(H+L)(red), or 0.25 ug Isotype Control (blue). Cells were fixed with 4% PFA and permeabilized with Flow Cytometry Perm Buffer (PF00011-C). This data was developed using the same antibody clone with 83172-2-PBS in a different storage buffer formulation.



Cytometric bead array standard curve of MP00188-2, USP8 Recombinant Matched Antibody Pair, PBS Only. Capture antibody: 83172-2-PBS. Detection antibody: 83172-3-PBS. Standard: Ag27143. Range: 0.625-20 ng/mL



Biolayer interferometry (BLI) kinetic assays of 83172-2-RR against Human USP8 were performed. The affinity constant is below 1 pM.