

For Research Use Only

SMAD4 Recombinant antibody, PBS Only (Detector)

Catalog Number: 83169-6-PBS



Basic Information

Catalog Number: 83169-6-PBS	GenBank Accession Number: BC002379	Purification Method: Protein A purification
Size: 100ug , Concentration: 1 mg/ml by Nanodrop;	GeneID (NCBI): 4089	CloneNo.: 240026A4
Source: Rabbit	UNIPROT ID: Q13485	
Isotype: IgG	Full Name: SMAD family member 4	
Immunogen Catalog Number: AG0299	Calculated MW: 60 kDa	

Applications

Tested Applications:
Sandwich ELISA, Indirect ELISA, Sample test

Species Specificity:
human

Product Information

83169-6-PBS targets SMAD4 as part of a matched antibody pair:

MP00267-4: 83169-5-PBS capture and 83169-6-PBS detection (validated in Sandwich ELISA)

Unconjugated rabbit recombinant monoclonal antibody in PBS only (BSA and azide free) storage buffer at a concentration of 1 mg/mL, ready for conjugation. Created using Proteintech's proprietary in-house recombinant technology. Recombinant production enables unrivalled batch-to-batch consistency, easy scale-up, and future security of supply.

This conjugation ready format makes antibodies ideal for use in many applications including: ELISAs, multiplex assays requiring matched pairs, mass cytometry, and multiplex imaging applications. Antibody use should be optimized by the end user for each application and assay.

Storage

Storage:
Store at -80°C.
Storage Buffer:
PBS Only

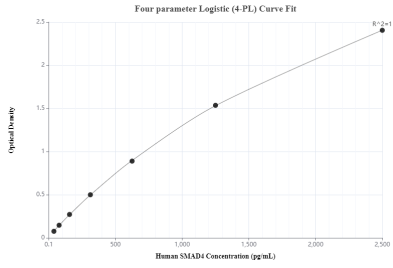
For technical support and original validation data for this product please contact:

T: 1 (888) 4PTGLAB (1-888-478-4522) (toll free in USA), or 1(312) 455-8498 (outside USA)

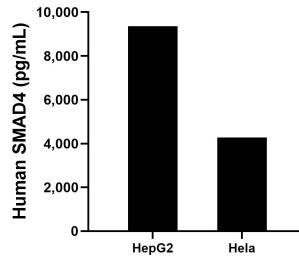
E: proteintech@ptglab.com
W: ptglab.com

This product is exclusively available under Proteintech Group brand and is not available to purchase from any other manufacturer.

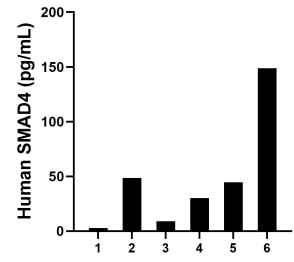
Selected Validation Data



Sandwich ELISA standard curve of MP00267-4, Human SMAD4 Monoclonal Matched Antibody Pair - PBS only. 83169-5-PBS was coated to a plate as the capture antibody and incubated with serial dilutions of standard Ag0299. 83169-6-PBS was HRP conjugated as the detection antibody. Range: 39.1-2500 pg/mL



The mean human SMAD4 concentration was determined to be 9,362.0 pg/mL in HepG2 cell extract based on a 6.0 mg/mL extract load and 4,272.2 pg/mL in HL-60 cell extract based on a 3 mg/mL extract load.



Serum of sixteen individual healthy human donors were measured. The human SMAD4 concentration of detected samples was determined to be 47.3 pg/mL with a range of ND - 148.8 pg/mL.