

For Research Use Only

SMAD4 Recombinant antibody, PBS Only (Detector)

Catalog Number: 83169-2-PBS



Basic Information

| | | |
|---|--|---|
| Catalog Number: 83169-2-PBS | GenBank Accession Number: BC002379 | Purification Method: Protein A purification |
| Size: 100ug, Concentration: 1mg/ml by Nanodrop; | GeneID (NCBI): 4089 | CloneNo.: 240026D10 |
| Source: Rabbit | UNIPROT ID: Q13485 | |
| Isotype: IgG | Full Name: SMAD family member 4 | |
| Immunogen Catalog Number: AG0299 | Calculated MW: 60 kDa | |

Applications

Tested Applications:
Cytometric bead array, Sandwich ELISA, Indirect ELISA, Sample test

Species Specificity:
human

Product Information

83169-2-PBS targets SMAD4 as part of a matched antibody pair:

MP00213-3: 83221-1-PBS capture and 83169-2-PBS detection (validated in Sandwich ELISA)

MP00267-1: 83169-4-PBS capture and 83169-2-PBS detection (validated in Cytometric bead array)

MP00267-3: 83169-3-PBS capture and 83169-2-PBS detection (validated in Cytometric bead array)

Unconjugated rabbit recombinant monoclonal antibody in PBS only (BSA and azide free) storage buffer at a concentration of 1 mg/mL, ready for conjugation. Created using Proteintech's proprietary in-house recombinant technology. Recombinant production enables unrivalled batch-to-batch consistency, easy scale-up, and future security of supply.

This conjugation ready format makes antibodies ideal for use in many applications including: ELISAs, multiplex assays requiring matched pairs, mass cytometry, and multiplex imaging applications. Antibody use should be optimized by the end user for each application and assay.

Storage

Storage:
Store at -80°C.
Storage Buffer:
PBS Only

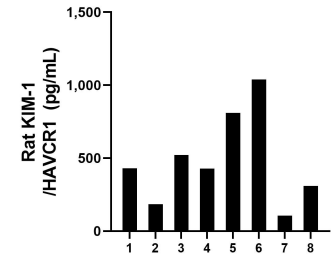
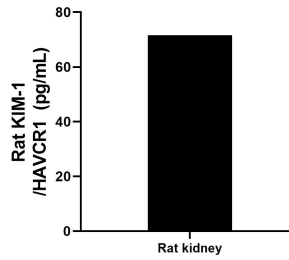
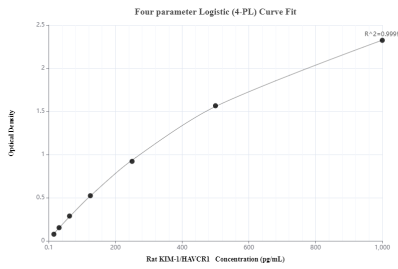
For technical support and original validation data for this product please contact:

T: 1 (888) 4PTGLAB (1-888-478-4522) (toll free in USA), or 1(312) 455-8498 (outside USA)

E: proteintech@ptglab.com
W: ptglab.com

This product is exclusively available under Proteintech Group brand and is not available to purchase from any other manufacturer.

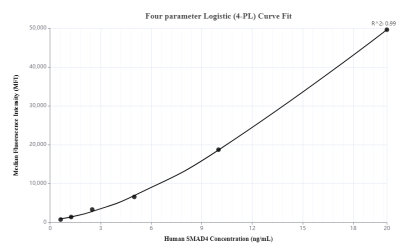
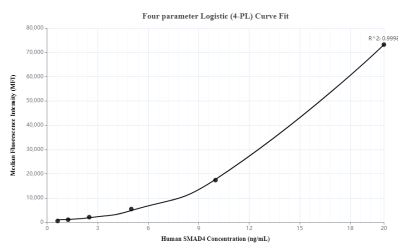
Selected Validation Data



Sandwich ELISA standard curve of MP00213-3, Rat KIM-1/HAVCR1 Monoclonal Matched Antibody Pair - PBS only. 83221-1-PBS was coated to a plate as the capture antibody and incubated with serial dilutions of standard Eg0597. 83169-2-PBS was HRP conjugated as the detection antibody. Range: 15.6-1000 pg/mL

Organs from 2 rats were rinsed with PBS to remove excess blood, chopped into 1-2 mm pieces, homogenized in 5-10 mL of PBS in a tissue homogenizer, and stored at $\leq -80^{\circ}\text{C}$ 5 min. After two freeze-thaw cycles were performed to break the cell membranes, the homogenates were centrifuged for 5 minutes at 5000 x g to remove particulate. Homogenates from rat kidney tissue were assayed for rat KIM-1/HAVCR1 and measured 71.6 pg/mL

Serum of eight individual healthy rats were measured. The rat KIM-1/HAVCR1 concentration of detected samples was determined to be 478.5 pg/mL with a range of 105.6-1,038.5 pg/mL



Cytometric bead array standard curve of MP00267-1, SMAD4 Recombinant Matched Antibody Pair, PBS Only. Capture antibody: 83169-4-PBS. Detection antibody: 83169-2-PBS. Standard: Ag0299. Range: 0.625-20 ng/mL

Cytometric bead array standard curve of MP00267-3, SMAD4 Recombinant Matched Antibody Pair, PBS Only. Capture antibody: 83169-3-PBS. Detection antibody: 83169-2-PBS. Standard: Ag0299. Range: 0.625-20 ng/mL