

For Research Use Only

# SAR1A Recombinant antibody

Catalog Number:83168-7-RR



## Basic Information

<b>Catalog Number:</b> 83168-7-RR	<b>GenBank Accession Number:</b> NM_020150	<b>Purification Method:</b> Protein A purification
<b>Size:</b> 100ul , Concentration: 1000 ug/ml by Nanodrop;	<b>GeneID (NCBI):</b> 56681	<b>CloneNo.:</b> 230471A1
<b>Source:</b> Rabbit	<b>UNIPROT ID:</b> Q9NR31	<b>Recommended Dilutions:</b> IF/ICC 1:200-1:800
<b>Isotype:</b> IgG	<b>Full Name:</b> SAR1 homolog A (S. cerevisiae)	
	<b>Calculated MW:</b> 22 kDa	

## Applications

<b>Tested Applications:</b> IF/ICC, ELISA	<b>Positive Controls:</b> IF/ICC : HepG2 cells,
<b>Species Specificity:</b> human	

## Background Information

SAR1A, also named as SAR1, SARA and SARA1, belongs to the small GTPase superfamily and SAR1 family. It is involved in transport from the endoplasmic reticulum to the Golgi apparatus. SAR1A is required to maintain SEC16A localization at discrete locations on the ER membrane perhaps by preventing its dissociation. SAR1A-GTP-dependent assembly of SEC16A on the ER membrane forms an organized scaffold defining endoplasmic reticulum exit sites (ERES).

## Storage

**Storage:**  
Store at -20°C. Stable for one year after shipment.  
**Storage Buffer:**  
PBS with 0.02% sodium azide and 50% glycerol pH 7.3.  
Aliquoting is unnecessary for -20°C storage

\*\*\* 20ul sizes contain 0.1% BSA

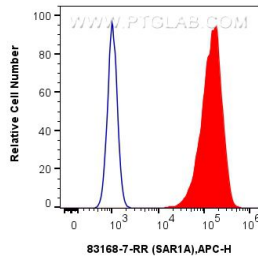
For technical support and original validation data for this product please contact:

T: 1 (888) 4PTGLAB (1-888-478-4522) (toll free in USA), or 1(312) 455-8498 (outside USA)

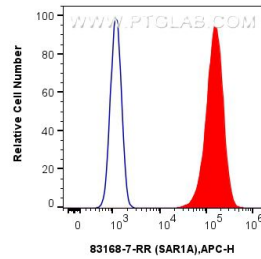
E: proteintech@ptglab.com  
W: ptglab.com

This product is exclusively available under Proteintech Group brand and is not available to purchase from any other manufacturer.

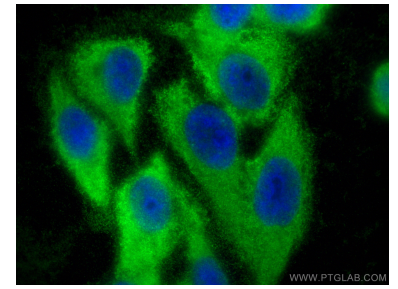
## Selected Validation Data



$1 \times 10^6$  A549 cells were intracellularly stained with 0.25  $\mu$ g SAR1A Recombinant antibody (83168-7-RR, Clone:230471A1) and APC-Conjugated Goat Anti-Rabbit IgG(H+L)(red), or 0.25  $\mu$ g Rabbit IgG Isotype Control Recombinant Antibody (98136-1-RR, Clone: 240953C9) (blue). Cells were fixed with 4% PFA and permeabilized with Flow Cytometry Perm Buffer (PF00011-C).



$1 \times 10^6$  A431 cells were intracellularly stained with 0.25  $\mu$ g SAR1A Recombinant antibody (83168-7-RR, Clone:230471A1) and APC-Conjugated Goat Anti-Rabbit IgG(H+L)(red), or 0.25  $\mu$ g Rabbit IgG Isotype Control Recombinant Antibody (98136-1-RR, Clone: 240953C9) (blue). Cells were fixed with 4% PFA and permeabilized with Flow Cytometry Perm Buffer (PF00011-C).



Immunofluorescent analysis of (-20°C Ethanol) fixed HepG2 cells using SAR1A antibody (83168-7-RR, Clone: 230471A1) at dilution of 1:400 and Multi-rAb CoraLite® Plus 488-Goat Anti-Rabbit Recombinant Secondary Antibody (H+L) (RGAR002).