

For Research Use Only

SAR1A Recombinant antibody, PBS Only

Catalog Number: 83168-7-PBS



Basic Information

Catalog Number: 83168-7-PBS	GenBank Accession Number: NM_020150	Purification Method: Protein A purification
Size: 100ug, Concentration: 1 mg/ml by Nanodrop;	GeneID (NCBI): 56681	CloneNo.: 230471A1
Source: Rabbit	UNIPROT ID: Q9NR31	
Isotype: IgG	Full Name: SAR1 homolog A (S. cerevisiae)	
	Calculated MW: 22 kDa	

Applications

Tested Applications:
IF/ICC, ELISA

Species Specificity:
human

Background Information

SAR1A, also named as SAR1, SARA and SARA1, belongs to the small GTPase superfamily and SAR1 family. It is involved in transport from the endoplasmic reticulum to the Golgi apparatus. SAR1A is required to maintain SEC16A localization at discrete locations on the ER membrane perhaps by preventing its dissociation. SAR1A-GTP-dependent assembly of SEC16A on the ER membrane forms an organized scaffold defining endoplasmic reticulum exit sites (ERES).

Storage

Storage:
Store at -80°C.

Storage Buffer:
PBS Only

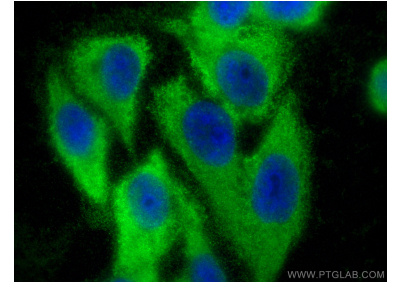
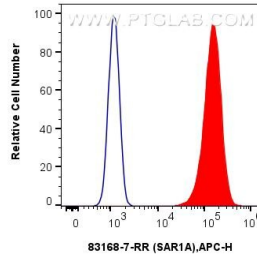
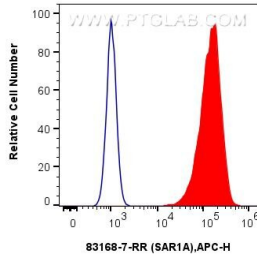
For technical support and original validation data for this product please contact:

T: 1 (888) 4PTGLAB (1-888-478-4522) (toll free in USA), or 1(312) 455-8498 (outside USA)

E: proteintech@ptglab.com
W: ptglab.com

This product is exclusively available under Proteintech Group brand and is not available to purchase from any other manufacturer.

Selected Validation Data



1x10⁶ A549 cells were intracellularly stained with 0.25 ug SAR1A Recombinant antibody (83168-7-RR, Clone:230471A1) and APC-Conjugated Goat Anti-Rabbit IgG(H+L) (red), or 0.25 ug Rabbit IgG Isotype Control Recombinant Antibody (98136-1-RR, Clone: 240953C9) (blue). Cells were fixed with 4% PFA and permeabilized with Flow Cytometry Perm Buffer (PF00011-C). This data was developed using the same antibody clone with 83168-7-PBS in a different storage buffer



1x10⁶ A431 cells were intracellularly stained with 0.25 ug SAR1A Recombinant antibody (83168-7-RR, Clone:230471A1) and APC-Conjugated Goat Anti-Rabbit IgG(H+L) (red), or 0.25 ug Rabbit IgG Isotype Control Recombinant Antibody (98136-1-RR, Clone: 240953C9) (blue). Cells were fixed with 4% PFA and permeabilized with Flow Cytometry Perm Buffer (PF00011-C). This data was developed using the same antibody clone with 83168-7-PBS in a different storage buffer



Immunofluorescent analysis of (-20°C Ethanol) fixed HepG2 cells using SAR1A antibody (83168-7-RR, Clone: 230471A1) at dilution of 1:400 and Multi-rAb CoraLite® Plus 488-Goat Anti-Rabbit Recombinant Secondary Antibody (H+L) (RGAR002). This data was developed using the same antibody clone with 83168-7-PBS in a different storage buffer formulation.