

For Research Use Only

SAR1A Recombinant antibody

Catalog Number: 83168-6-RR



Basic Information

Catalog Number: 83168-6-RR	GenBank Accession Number: NM_020150	Purification Method: Protein A purification
Size: 100ul , Concentration: 1000 µg/ml by Nanodrop;	GeneID (NCBI): 56681	CloneNo.: 230471A11
Source: Rabbit	UNIPROT ID: Q9NR31	Recommended Dilutions: WB 1:5000-1:50000
Isotype: IgG	Full Name: SAR1 homolog A (S. cerevisiae)	
	Calculated MW: 22 kDa	
	Observed MW: 23-25 kDa	

Applications

Tested Applications:
WB, FC (Intra), ELISA

Species Specificity:
human, mouse

Positive Controls:

WB : HEK-293T cells, NIH/3T3 cells, HeLa cells, Jurkat cells, mouse liver tissue

Background Information

SAR1A, also named as SAR1, SARA and SARA1, belongs to the small GTPase superfamily and SAR1 family. It is involved in transport from the endoplasmic reticulum to the Golgi apparatus. SAR1A is required to maintain SEC16A localization at discrete locations on the ER membrane perhaps by preventing its dissociation. SAR1A-GTP-dependent assembly of SEC16A on the ER membrane forms an organized scaffold defining endoplasmic reticulum exit sites (ERES).

Storage

Storage:
Store at -20°C. Stable for one year after shipment.

Storage Buffer:
PBS with 0.02% sodium azide and 50% glycerol pH 7.3.

Aliquoting is unnecessary for -20°C storage

*** 20ul sizes contain 0.1% BSA

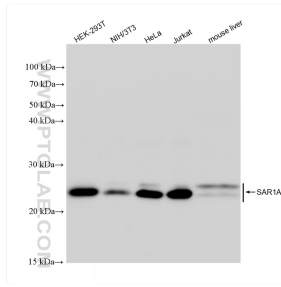
For technical support and original validation data for this product please contact:

T: 1 (888) 4PTGLAB (1-888-478-4522) (toll free in USA), or 1(312) 455-8498 (outside USA)

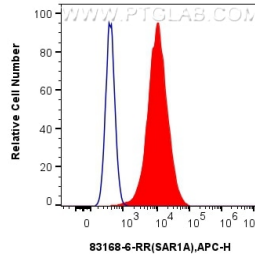
E: proteintech@ptglab.com
W: ptglab.com

This product is exclusively available under Proteintech Group brand and is not available to purchase from any other manufacturer.

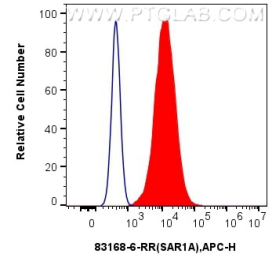
Selected Validation Data



Various lysates were subjected to SDS PAGE followed by western blot with 83168-6-RR (SAR1A antibody) at dilution of 1:10000 incubated at room temperature for 1.5 hours.



1×10^6 A549 cells were intracellularly stained with 0.25 ug SAR1A Recombinant antibody (83168-6-RR, Clone:230471A11) and APC-Conjugated AffiniPure Goat Anti-Rabbit IgG(H+L)(red), or 0.25 ug Rabbit IgG control Rabbit PolyAb (30000-0-AP) (blue). Cells were fixed with 4% PFA and permeabilized with Flow Cytometry Perm Buffer (PF00011-C).



1×10^6 A431 cells were intracellularly stained with 0.25 ug SAR1A Recombinant antibody (83168-6-RR, Clone:230471A11) and APC-Conjugated AffiniPure Goat Anti-Rabbit IgG(H+L)(red), or 0.25 ug Rabbit IgG control Rabbit PolyAb (30000-0-AP) (blue). Cells were fixed with 4% PFA and permeabilized with Flow Cytometry Perm Buffer (PF00011-C).