

For Research Use Only

TGFB2/TGF-beta 2 Recombinant antibody

Catalog Number: 83167-5-RR



Basic Information

Catalog Number: 83167-5-RR	GenBank Accession Number: NM_003238	Purification Method: Protein A purification
Size: 100ul , Concentration: 1000 ug/ml by Nanodrop;	GeneID (NCBI): 7042	CloneNo.: 230461F5
Source: Rabbit	UNIPROT ID: P61812	Recommended Dilutions: WB 1:500-1:2000 IHC 1:125-1:500 IF/ICC 1:125-1:500
Isotype: IgG	Full Name: transforming growth factor, beta 2	
	Calculated MW: 48 kDa	
	Observed MW: 48 kDa	

Applications

Tested Applications: WB, IHC, IF/ICC, FC (Intra), ELISA	Positive Controls: WB : A549 cells, IHC : human intrahepatic cholangiocarcinoma tissue, IF/ICC : HeLa cells,
Species Specificity: human	
Note-IHC: suggested antigen retrieval with TE buffer pH 9.0; (*) Alternatively, antigen retrieval may be performed with citrate buffer pH 6.0	

Background Information

Transforming growth factor beta-2 (TGFB2), also named G-TSF, BSC-1 cell growth inhibitor, Polyergin and Cetermin, belongs to the TGF-beta family. TGFB2 is a secreted protein and contains a 19aa signal peptides at its N-terminal. Heterodimers with TGFB1 and with TGFB2 have been found in bone. It was proved to have suppressive effects on interleukin-2 dependent T-cell growth.

Storage

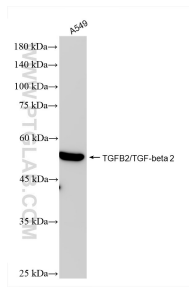
Storage:
Store at -20°C. Stable for one year after shipment.
Storage Buffer:
PBS with 0.02% sodium azide and 50% glycerol pH 7.3.
Aliquoting is unnecessary for -20°C storage

*** 20ul sizes contain 0.1% BSA

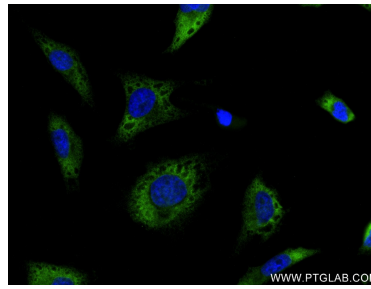
For technical support and original validation data for this product please contact:
T: 1 (888) 4PTGLAB (1-888-478-4522) (toll free in USA), or 1(312) 455-8498 (outside USA)
E: proteintech@ptglab.com
W: ptglab.com

This product is exclusively available under Proteintech Group brand and is not available to purchase from any other manufacturer.

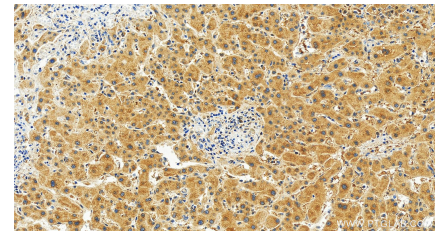
Selected Validation Data



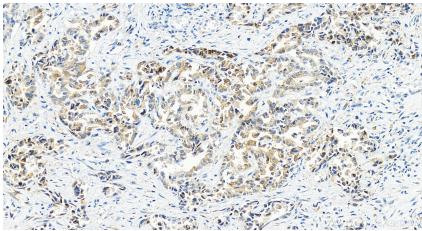
A549 cells were subjected to SDS PAGE followed by western blot with 83167-5-RR (TGFB2/TGF-beta 2 antibody) at dilution of 1:1000 incubated at room temperature for 1.5 hours.



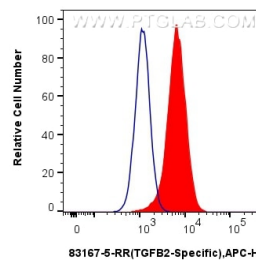
Immunofluorescent analysis of (4% PFA) fixed HeLa cells using TGFB2-Specific antibody (83167-5-RR, Clone: 230461F5) at dilution of 1:250 and CoraLite®488-Conjugated AffiniPure Goat Anti-Mouse IgG(H+L) (SA00013-1).



Immunohistochemical analysis of paraffin-embedded human intrahepatic cholangiocarcinoma tissue slide using 83167-5-RR (TGFB2/TGF-beta 2 antibody) at dilution of 1:250 (under 20x lens). Heat mediated antigen retrieval with Tris-EDTA buffer (pH 9.0).



Immunohistochemical analysis of paraffin-embedded human intrahepatic cholangiocarcinoma tissue slide using 83167-5-RR (TGFB2/TGF-beta 2 antibody) at dilution of 1:250 (under 20x lens). Heat mediated antigen retrieval with Tris-EDTA buffer (pH 9.0).



1×10^6 A549 cells were intracellularly stained with 0.25 μ g Tgfb2-Specific Recombinant Antibody (83167-5-RR, Clone:230461F5) and APC-Conjugated AffiniPure Goat Anti-Rabbit IgG(H+L) (red), or 0.25 μ g Isotype Control (blue). Cells were fixed with 4% PFA and permeabilized with Flow Cytometry Perm Buffer (PF00011-C).