

For Research Use Only

# IFI35 Recombinant antibody, PBS Only

Catalog Number: 83160-4-PBS



## Basic Information

<b>Catalog Number:</b> 83160-4-PBS	<b>GenBank Accession Number:</b> BC001356	<b>Purification Method:</b> Protein A purification
<b>Size:</b> 100ug , Concentration: 1mg/ml by Nanodrop;	<b>GeneID (NCBI):</b> 3430	<b>CloneNo.:</b> 240063E1
<b>Source:</b> Rabbit	<b>UNIPROT ID:</b> P80217	
<b>Isotype:</b> IgG	<b>Full Name:</b> interferon-induced protein 35	
<b>Immunogen Catalog Number:</b> AG34653	<b>Calculated MW:</b> 31 kDa	
	<b>Observed MW:</b> 31-35 kDa	

## Applications

**Tested Applications:**  
WB, IHC, Indirect ELISA

**Species Specificity:**  
human

## Background Information

IFI35 (interferon induced protein 35), also known as IFP35. It is expected to be located in cytoplasm, nucleus and extracellular space. The protein is expressed in a wide range of cell types, including fibroblasts, macrophages, and epithelial cells. Involved in several processes, including macrophage activation involved in immune response; positive regulation of defense response; and regulation of signal transduction. And the calculated molecular weight of IFI35 is 31 kDa.

## Storage

**Storage:**  
Store at -80°C.  
**Storage Buffer:**  
PBS Only

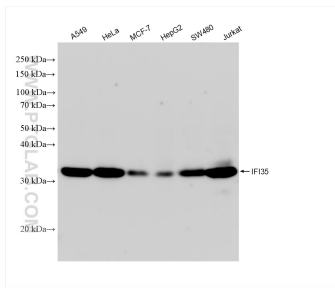
For technical support and original validation data for this product please contact:

T: 1 (888) 4PTGLAB (1-888-478-4522) (toll free in USA), or 1(312) 455-8498 (outside USA)

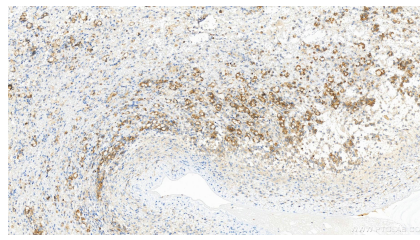
E: [proteintech@ptglab.com](mailto:proteintech@ptglab.com)  
W: [ptglab.com](http://ptglab.com)

**This product is exclusively available under Proteintech Group brand and is not available to purchase from any other manufacturer.**

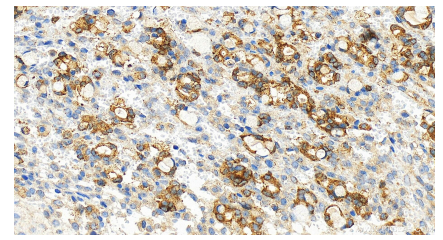
## Selected Validation Data



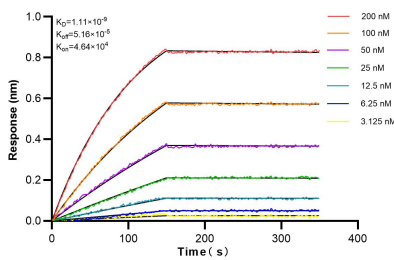
Various lysates were subjected to SDS PAGE followed by western blot with 83160-4-RR (IFI35 antibody) at dilution of 1:10000 incubated at room temperature for 1.5 hours. This data was developed using the same antibody clone with 83160-4-PBS in a different storage buffer formulation.



Immunohistochemical analysis of paraffin-embedded human ovary cancer tissue slide using 83160-4-RR (IFI35 antibody) at dilution of 1:400 (under 20x lens). Heat mediated antigen retrieval with Tris-EDTA buffer (pH 9.0). This data was developed using the same antibody clone with 83160-4-PBS in a different storage buffer formulation.



Immunohistochemical analysis of paraffin-embedded human ovary cancer tissue slide using 83160-4-RR (IFI35 antibody) at dilution of 1:400 (under 20x lens). Heat mediated antigen retrieval with Tris-EDTA buffer (pH 9.0). This data was developed using the same antibody clone with 83160-4-PBS in a different storage buffer formulation.



Biolayer interferometry (BLI) kinetic assays of 83160-4-RR against Human IFI35 were performed. The affinity constant is 1.11 nM.