

For Research Use Only

IFI35 Recombinant antibody

Catalog Number: 83160-2-RR



Basic Information

Catalog Number: 83160-2-RR	GenBank Accession Number: BC001356	Purification Method: Protein A purification
Size: 100ul , Concentration: 1000 µg/ml by Nanodrop;	GeneID (NCBI): 3430	CloneNo.: 240063C6
Source: Rabbit	UNIPROT ID: P80217	Recommended Dilutions: IF/ICC 1:125-1:500
Isotype: IgG	Full Name: interferon-induced protein 35	
Immunogen Catalog Number: AG34653	Calculated MW: 31 kDa	

Applications

Tested Applications: IF/ICC, FC (Intra), ELISA	Positive Controls: IF/ICC : HeLa cells,
Species Specificity: human	

Background Information

IFI35 (interferon induced protein 35), also known as IFP35. It is expected to be located in cytoplasm, nucleus and extracellular space. The protein is expressed in a wide range of cell types, including fibroblasts, macrophages, and epithelial cells. Involved in several processes, including macrophage activation involved in immune response; positive regulation of defense response; and regulation of signal transduction. And the calculated molecular weight of IFI35 is 31 kDa.

Storage

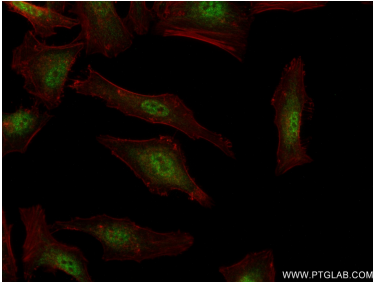
Storage:
Store at -20°C. Stable for one year after shipment.
Storage Buffer:
PBS with 0.02% sodium azide and 50% glycerol pH 7.3.
Aliquoting is unnecessary for -20°C storage

*** 20ul sizes contain 0.1% BSA

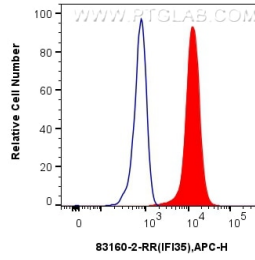
For technical support and original validation data for this product please contact:
T: 1 (888) 4PTGLAB (1-888-478-4522) (toll free in USA), or 1(312) 455-8498 (outside USA) E: proteintech@ptglab.com
W: ptglab.com

This product is exclusively available under Proteintech Group brand and is not available to purchase from any other manufacturer.

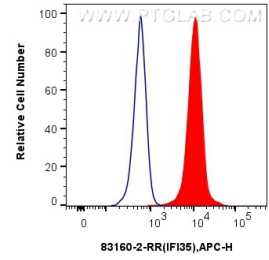
Selected Validation Data



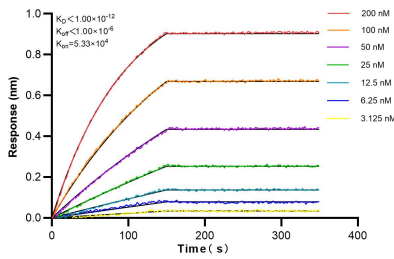
Immunofluorescent analysis of (4% PFA) fixed HeLa cells using IFI35 antibody (83160-2-RR, Clone: 240063C6) at dilution of 1:250 and CoraLite®488-Conjugated AffiniPure Goat Anti-Rabbit IgG(H+L) (SA00013-2), CL594-Phalloidin (red).



1x10⁶ A549 cells were intracellularly stained with 0.25 ug Ifi35 Recombinant Antibody (83160-2-RR, Clone:240063C6) and APC-Conjugated AffiniPure Goat Anti-Rabbit IgG(H+L)(red), or 0.25 ug Rabbit IgG control Rabbit PolyAb (30000-0-AP) (blue). Cells were fixed and permeabilized with True-Nuclear Transcription Factor Buffer Set.



1x10⁶ HeLa cells were intracellularly stained with 0.25 ug Ifi35 Recombinant Antibody (83160-2-RR, Clone:240063C6) and APC-Conjugated AffiniPure Goat Anti-Rabbit IgG(H+L)(red), or 0.25 ug Rabbit IgG control Rabbit PolyAb (30000-0-AP) (blue). Cells were fixed and permeabilized with True-Nuclear Transcription Factor Buffer Set.



Bi-layer interferometry (BLI) kinetic assays of 83160-2-RR against Human IFI35 were performed. The affinity constant is below 1 pM.