

For Research Use Only

STX1A Recombinant antibody

Catalog Number: 83159-6-RR



Basic Information

Catalog Number: 83159-6-RR	GenBank Accession Number: NM_004603	Purification Method: Protein A purification
Size: 100ul , Concentration: 1000 ug/ml by Nanodrop;	GeneID (NCBI): 6804	CloneNo.: 230470F5
Source: Rabbit	UNIPROT ID: Q16623	Recommended Dilutions: WB 1:1000-1:6000 IHC 1:500-1:2000 IF-P 1:250-1:1000
Isotype: IgG	Full Name: syntaxin 1A (brain)	
	Calculated MW: 33 kDa	
	Observed MW: 33-35 kDa	

Applications

Tested Applications:

WB, IHC, IF-P, ELISA

Species Specificity:

human, mouse, rat

Note-IHC: suggested antigen retrieval with TE buffer pH 9.0; (*) Alternatively, antigen retrieval may be performed with citrate buffer pH 6.0

Positive Controls:

WB : mouse brain tissue, rat brain tissue, human brain tissue

IHC : mouse brain tissue,

IF-P : mouse cerebellum tissue,

Background Information

Syntaxins are a family of transmembrane proteins that belong to the SNARE complex (PMID: 11737951). In conjunction with other SNAREs and with the cytoplasmic NSF and SNAP proteins, syntaxins mediate vesicle fusion in diverse vesicular transport processes along the exocytic and endocytic pathways (PMID: 11737951). Syntaxin 1A (STX1A) and 1B (STX1B), two closely related isoforms of syntaxin 1, are involved in synaptic vesicle docking and fusion during neurotransmitter release (PMID: 7690687; 1321498; 18691641). This antibody recognizes human STX1A.

Storage

Storage:

Store at -20°C. Stable for one year after shipment.

Storage Buffer:

PBS with 0.02% sodium azide and 50% glycerol pH 7.3.

Aliquoting is unnecessary for -20°C storage

*** 20ul sizes contain 0.1% BSA

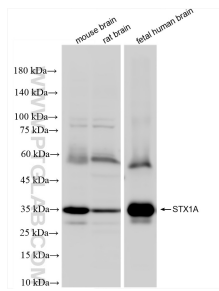
For technical support and original validation data for this product please contact:

T: 1 (888) 4PTGLAB (1-888-478-4522) (toll free in USA), or 1(312) 455-8498 (outside USA)

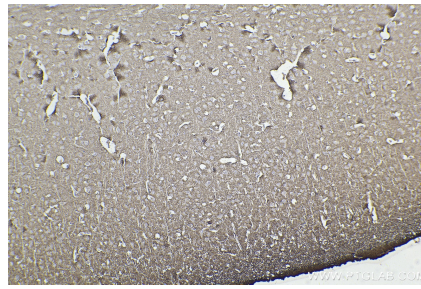
E: proteintech@ptglab.com
W: ptglab.com

This product is exclusively available under Proteintech Group brand and is not available to purchase from any other manufacturer.

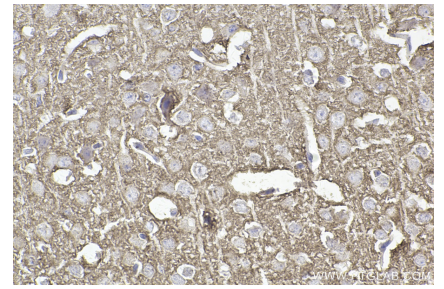
Selected Validation Data



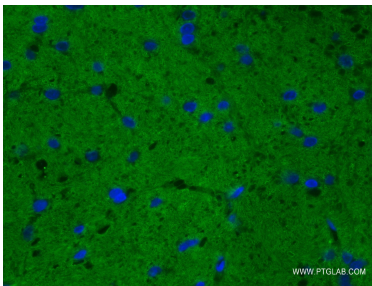
Various lysates were subjected to SDS PAGE followed by western blot with 83159-6-RR (STX1A antibody) at dilution of 1:3000 incubated at room temperature for 1.5 hours.



Immunohistochemical analysis of paraffin-embedded mouse brain tissue slide using 83159-6-RR (STX1A antibody) at dilution of 1:1000 (under 10x lens). Heat mediated antigen retrieval with Tris-EDTA buffer (pH 9.0).



Immunohistochemical analysis of paraffin-embedded mouse brain tissue slide using 83159-6-RR (STX1A antibody) at dilution of 1:1000 (under 40x lens). Heat mediated antigen retrieval with Tris-EDTA buffer (pH 9.0).



Immunofluorescent analysis of (4% PFA) fixed mouse cerebellum tissue using STX1A antibody (83159-6-RR, Clone: 230470F5) at dilution of 1:500 and CoraLite®488-Conjugated AffiniPure Goat Anti-Rabbit IgG(H+L) (SA00013-2).