

For Research Use Only

PD-L2/B7-DC Recombinant antibody, PBS Only (Capture)

Catalog Number: 83158-3-PBS



Basic Information

Catalog Number: 83158-3-PBS	GenBank Accession Number: BC074766	Purification Method: Protein A purification
Size: 100ug, Concentration: 1mg/ml by Nanodrop;	GeneID (NCBI): 80380	CloneNo.: 230514C6
Source: Rabbit	UNIPROT ID: Q9BQ51	
Isotype: IgG	Full Name: programmed cell death 1 ligand 2	
	Calculated MW: 273 aa, 31 kDa	

Applications

Tested Applications:
Cytometric bead array, Sandwich ELISA, Indirect ELISA,
Sample test

Species Specificity:
human

Product Information

83158-3-PBS targets PD-L2/B7-DC as part of a matched antibody pair:

MP00778-1: 83158-3-PBS capture and 83158-1-PBS detection (validated in Cytometric bead array)

MP00778-3: 83158-3-PBS capture and 83158-4-PBS detection (validated in Cytometric bead array)

MP00778-4: 83158-3-PBS capture and 83158-1-PBS detection (validated in Sandwich ELISA)

Unconjugated rabbit recombinant monoclonal antibody in PBS only (BSA and azide free) storage buffer at a concentration of 1 mg/mL, ready for conjugation. Created using Proteintech's proprietary in-house recombinant technology. Recombinant production enables unrivalled batch-to-batch consistency, easy scale-up, and future security of supply.

This conjugation ready format makes antibodies ideal for use in many applications including: ELISAs, multiplex assays requiring matched pairs, mass cytometry, and multiplex imaging applications. Antibody use should be optimized by the end user for each application and assay.

Storage

Storage:
Store at -80°C.
Storage Buffer:
PBS Only

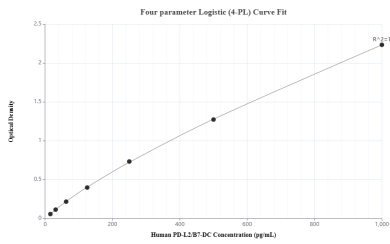
For technical support and original validation data for this product please contact:

T: 1 (888) 4PTGLAB (1-888-478-4522) (toll free
in USA), or 1(312) 455-8498 (outside USA)

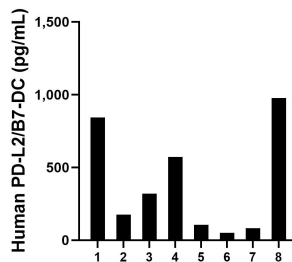
E: proteintech@ptglab.com
W: ptglab.com

This product is exclusively available under Proteintech Group brand and is not available to purchase from any other manufacturer.

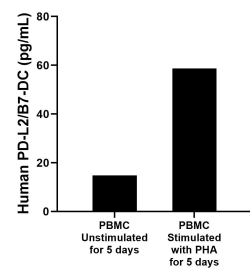
Selected Validation Data



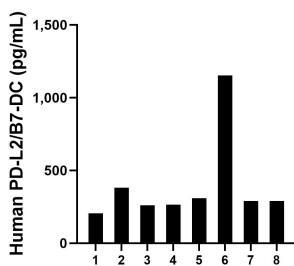
Sandwich ELISA standard curve of MP00778-4, Human PD-L2/B7-DC Monoclonal Matched Antibody Pair - PBS only. 83158-3-PBS was coated to a plate as the capture antibody and incubated with serial dilutions of standard Eg0507. 83158-1-PBS was HRP conjugated as the detection antibody. Range: 15.6-1000 pg/mL



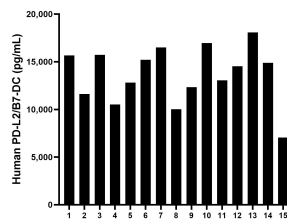
Serum of fifteen individual healthy human donors were measured. The human PD-L2/B7-DC concentration of detected samples was determined to be 13,665.12 pg/mL with a range of 7,054.02 - 18,074.46 pg/mL



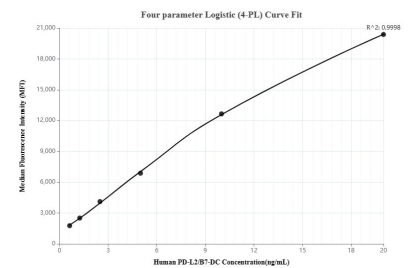
For the PBMC supernatant cultured for 4 days, the mean PD-L2/B7-DC concentration was determined to be 14.8 pg/mL in unstimulated PBMC supernatant, 58.7 pg/mL in PHA stimulated PBMC supernatant.



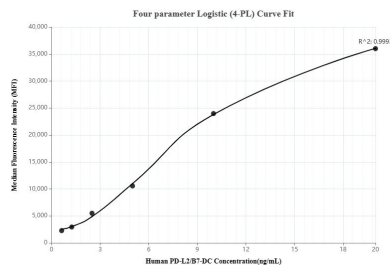
Milk of eight individual healthy human donors was measured. The human PD-L2/B7-DC concentration of detected samples was determined to be 394.5 pg/mL with a range of 206.2 - 1,153.2 pg/mL



Serum of fifteen individual healthy human donors were measured. The human PD-L2/B7-DC concentration of detected samples was determined to be 13,665.12 pg/mL with a range of 7,054.02 - 18,074.46 pg/mL



Cytometric bead array standard curve of MP00778-1, PD-L2/B7-DC Recombinant Matched Antibody Pair, PBS Only. Capture antibody: 83158-3-PBS. Detection antibody: 83158-1-PBS. Standard: Eg0507. Range: 0.625-20 ng/mL



Cytometric bead array standard curve of MP00778-3, PD-L2/B7-DC Recombinant Matched Antibody Pair, PBS Only. Capture antibody: 83158-3-PBS. Detection antibody: 83158-4-PBS. Standard: Eg0507. Range: 0.625-20 ng/mL