

For Research Use Only

# MCP-1/CCL2 Recombinant antibody

Catalog Number: 83157-5-RR

1 Publications



## Basic Information

**Catalog Number:**

83157-5-RR

**Size:**

100ul , Concentration: 1000 ug/ml by Nanodrop;

**Source:**

Rabbit

**Isotype:**

IgG

**GenBank Accession Number:**

NM-011333

**GeneID (NCBI):**

20296

**Full Name:**

chemokine (C-C motif) ligand 2

**Observed MW:**

16 kDa

**Purification Method:**

Protein A purification

**CloneNo.:**

230483F11

**Recommended Dilutions:**

WB 1:2000-1:10000

## Applications

**Tested Applications:**

WB, ELISA

**Cited Applications:**

WB

**Species Specificity:**

mouse

**Cited Species:**

human

**Positive Controls:**

WB : LPS and Brefeldin A treated RAW 264.7 cells,

## Background Information

Monocyte chemoattractant protein-1 (MCP-1/CCL2) is one of the key chemokines that regulate migration and infiltration of monocytes/macrophages. Both CCL2 and its receptor CCR2 have been demonstrated to be induced and involved in various diseases. Migration of monocytes from the blood stream across the vascular endothelium is required for routine immunological surveillance of tissues, as well as in response to inflammation.

## Notable Publications

Author	Pubmed ID	Journal	Application
Li-Chien Chang	39105397	Environ Toxicol	WB

## Storage

**Storage:**

Store at -20°C. Stable for one year after shipment.

**Storage Buffer:**

PBS with 0.02% sodium azide and 50% glycerol pH 7.3.

Aliquoting is unnecessary for -20°C storage

\*\*\* 20ul sizes contain 0.1% BSA

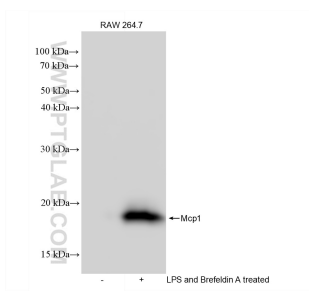
For technical support and original validation data for this product please contact:

T: 1 (888) 4PTGLAB (1-888-478-4522) (toll free in USA), or 1(312) 455-8498 (outside USA)

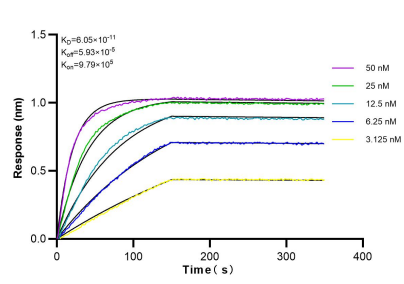
E: [proteintech@ptglab.com](mailto:proteintech@ptglab.com)  
W: [ptglab.com](http://ptglab.com)

This product is exclusively available under Proteintech Group brand and is not available to purchase from any other manufacturer.

## Selected Validation Data



Un-treated, LPS and Brefeldin A treated RAW 264.7 cells were subjected to SDS PAGE followed by western blot with 83157-5-RR (Mcp1 antibody) at dilution of 1:5000 incubated at room temperature for 1.5 hours.



Biolayer interferometry (BLI) kinetic assays of 83157-5-RR against Mouse MCP-1 were performed. The affinity constant is 60.5 pM.