

For Research Use Only

Mouse MCP-1/CCL2 Recombinant antibody, PBS Only

Catalog Number: 83157-5-PBS



Basic Information

Catalog Number: 83157-5-PBS	GenBank Accession Number: NM-011333	Purification Method: Protein A purification
Size: 100ug , Concentration: 1 mg/ml by Nanodrop;	GeneID (NCBI): 20296	CloneNo.: 230483F11
Source: Rabbit	Full Name: chemokine (C-C motif) ligand 2	
Isotype: IgG	Observed MW: 16 kDa	

Applications

Tested Applications:
WB, Indirect ELISA

Species Specificity:
mouse

Background Information

Monocyte chemoattractant protein-1 (MCP-1/CCL2) is one of the key chemokines that regulate migration and infiltration of monocytes/macrophages. Both CCL2 and its receptor CCR2 have been demonstrated to be induced and involved in various diseases. Migration of monocytes from the blood stream across the vascular endothelium is required for routine immunological surveillance of tissues, as well as in response to inflammation.

Storage

Storage:
Store at -80°C.

Storage Buffer:
PBS Only

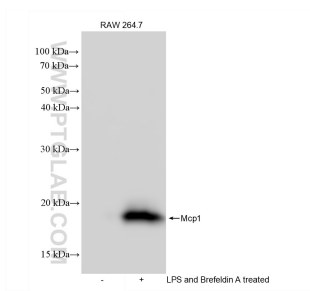
For technical support and original validation data for this product please contact:

T: 1 (888) 4PTGLAB (1-888-478-4522) (toll free in USA), or 1(312) 455-8498 (outside USA)

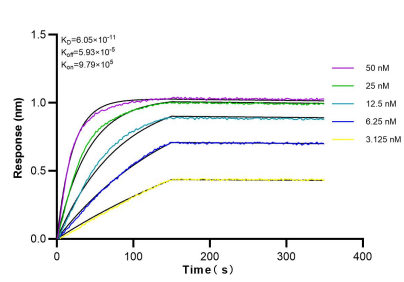
E: proteintech@ptglab.com
W: ptglab.com

This product is exclusively available under Proteintech Group brand and is not available to purchase from any other manufacturer.

Selected Validation Data



Un-treated, LPS and Brefeldin A treated RAW 264.7 cells were subjected to SDS PAGE followed by western blot with 83157-5-RR (Mcp1 antibody) at dilution of 1:5000 incubated at room temperature for 1.5 hours. This data was developed using the same antibody clone with 83157-5-PBS in a different storage buffer formulation.



Biolayer interferometry (BLI) kinetic assays of 83157-5-RR against Mouse MCP-1 were performed. The affinity constant is 60.5 pM.