

For Research Use Only

Mouse MCP-1/CCL2 Recombinant antibody, PBS Only (Capture/Detector)

Catalog Number: 83157-4-PBS



Basic Information

Catalog Number: 83157-4-PBS	GenBank Accession Number: NM-011333	Purification Method: Protein A purification
Size: 100ug, Concentration: 1 mg/ml by Nanodrop;	GeneID (NCBI): 20296	CloneNo.: 230483H3
Source: Rabbit	Full Name: chemokine (C-C motif) ligand 2	
Isotype: IgG		

Applications

Tested Applications:
Cytometric bead array, Sandwich ELISA, Indirect ELISA, Sample test

Species Specificity:
mouse

Product Information

83157-4-PBS targets MCP-1/CCL2 as part of a matched antibody pair:

MP00168-1: 83157-4-PBS capture and 83157-2-PBS detection (validated in Cytometric bead array)

MP00168-3: 83157-4-PBS capture and 83157-1-PBS detection (validated in Cytometric bead array)

MP00168-4: 83157-6-PBS capture and 83157-4-PBS detection (validated in Sandwich ELISA)

Unconjugated rabbit recombinant monoclonal antibody in PBS only (BSA and azide free) storage buffer at a concentration of 1 mg/mL, ready for conjugation. Created using Proteintech's proprietary in-house recombinant technology. Recombinant production enables unrivalled batch-to-batch consistency, easy scale-up, and future security of supply.

This conjugation ready format makes antibodies ideal for use in many applications including: ELISAs, multiplex assays requiring matched pairs, mass cytometry, and multiplex imaging applications. Antibody use should be optimized by the end user for each application and assay.

Storage

Storage:
Store at -80°C.
Storage Buffer:
PBS Only

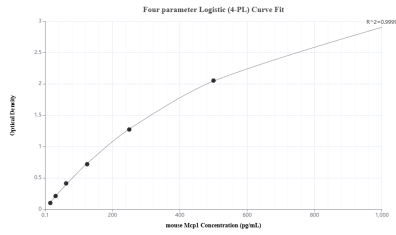
For technical support and original validation data for this product please contact:

T: 1 (888) 4PTGLAB (1-888-478-4522) (toll free in USA), or 1(312) 455-8498 (outside USA)

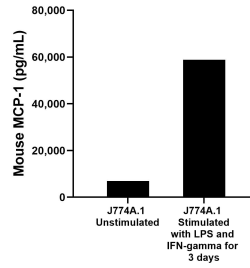
E: proteintech@ptglab.com
W: ptglab.com

This product is exclusively available under Proteintech Group brand and is not available to purchase from any other manufacturer.

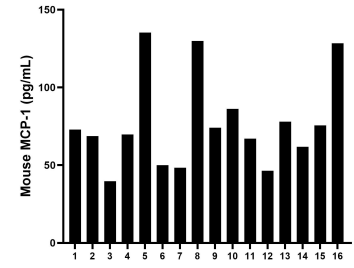
Selected Validation Data



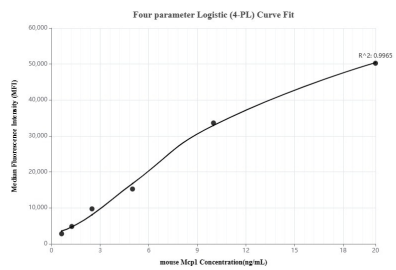
Sandwich ELISA standard curve of MP00168-4, Mouse MCP-1 Recombinant Matched Antibody Pair - PBS only. 83157-6-PBS was coated to a plate as the capture antibody and incubated with serial dilutions of standard Eg0427. 83157-4-PBS was HRP conjugated as the detection antibody. Range: 15.6-1000 pg/mL



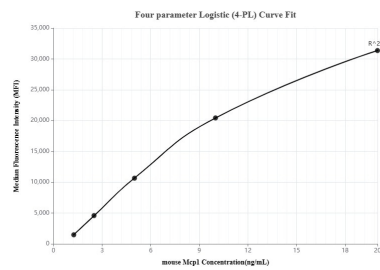
J774A.1 mouse reticulum cell sarcoma macrophage cells (1×10^6 cells/mL) were cultured for 3 days in DMEM containing 10% fetal bovine serum. Cells were untreated or treated with 500 ng/mL recombinant mouse IFN- γ and 10 ng/mL LPS. An aliquot of the cell culture supernatants were removed, assayed for mouse MCP-1, and measured 6,956.6 pg/mL and 58,869.9 pg/mL



Serum of sixteen mice was measured. The MCP-1 concentration of detected samples was determined to be 77.0 pg/mL with a range of 39.7 - 135.3 pg/mL



Cytometric bead array standard curve of MP00168-1, Mouse Ccl2 Recombinant Matched Antibody Pair, PBS Only. Capture antibody: 83157-4-PBS. Detection antibody: 83157-2-PBS. Standard: Eg0427. Range: 0.625-20 ng/mL



Cytometric bead array standard curve of MP00168-3, Mouse Ccl2 Recombinant Matched Antibody Pair, PBS Only. Capture antibody: 83157-4-PBS. Detection antibody: 83157-1-PBS. Standard: Eg0427. Range: 1.25-20 ng/mL