

For Research Use Only

# CD276 Recombinant antibody, PBS Only (Capture)

Catalog Number: 83152-2-PBS



## Basic Information

<b>Catalog Number:</b> 83152-2-PBS	<b>GenBank Accession Number:</b> NM_001024736	<b>Purification Method:</b> Protein A purification
<b>Size:</b> 100ug, Concentration: 1mg/ml by Nanodrop;	<b>GeneID (NCBI):</b> 80381	<b>CloneNo.:</b> 230305C1
<b>Source:</b> Rabbit	<b>UNIPROT ID:</b> Q5ZPR3	
<b>Isotype:</b> IgG	<b>Full Name:</b> CD276 molecule	
	<b>Calculated MW:</b> 57 kDa	

## Applications

**Tested Applications:**  
Cytometric bead array, Sandwich ELISA, Indirect ELISA, Sample test

**Species Specificity:**  
human

## Product Information

83152-2-PBS targets CD276 as part of a matched antibody pair:

MP00248-2: 83152-2-PBS capture and 83152-3-PBS detection (validated in Cytometric bead array)

MP00248-3: 83152-2-PBS capture and 83152-1-PBS detection (validated in Cytometric bead array, Sandwich ELISA)

Unconjugated rabbit recombinant monoclonal antibody in PBS only (BSA and azide free) storage buffer at a concentration of 1 mg/mL, ready for conjugation. Created using Proteintech's proprietary in-house recombinant technology. Recombinant production enables unrivalled batch-to-batch consistency, easy scale-up, and future security of supply.

This conjugation ready format makes antibodies ideal for use in many applications including: ELISAs, multiplex assays requiring matched pairs, mass cytometry, and multiplex imaging applications. Antibody use should be optimized by the end user for each application and assay.

## Storage

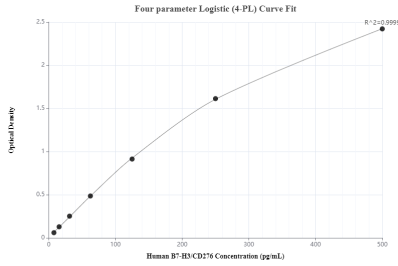
**Storage:**  
Store at -80°C.

**Storage Buffer:**  
PBS Only

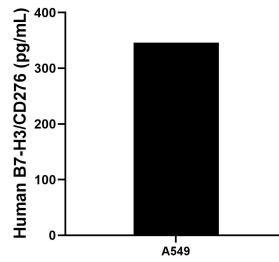
For technical support and original validation data for this product please contact:  
T: 1 (888) 4PTGLAB (1-888-478-4522) (toll free in USA), or 1(312) 455-8498 (outside USA)      E: [proteintech@ptglab.com](mailto:proteintech@ptglab.com)  
W: [ptglab.com](http://ptglab.com)

**This product is exclusively available under Proteintech Group brand and is not available to purchase from any other manufacturer.**

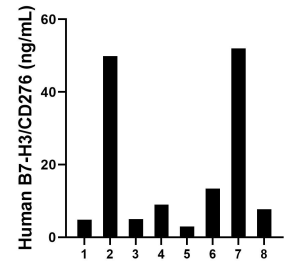
## Selected Validation Data



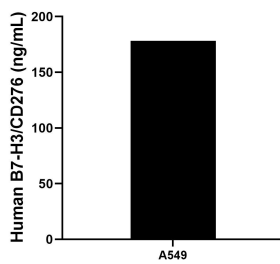
Sandwich ELISA standard curve of MP00248-3, Human B7-H3/CD276 Recombinant Matched Antibody Pair - PBS only. 83152-2-PBS was coated to a plate as the capture antibody and incubated with serial dilutions of standard Eg0075. 83152-1-PBS was HRP conjugated as the detection antibody. Range: 7.8-500 pg/mL



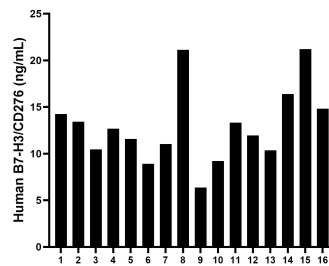
A549 were cultured in DMEM supplemented with 10% fetal bovine serum, 2.5 mM L-glutamine, 100 U/mL penicillin, and 100 µg/mL streptomycin sulfate. An aliquot of the cell culture supernate was removed, assayed for human B7-H3/CD276, and measured 346.1 pg/mL



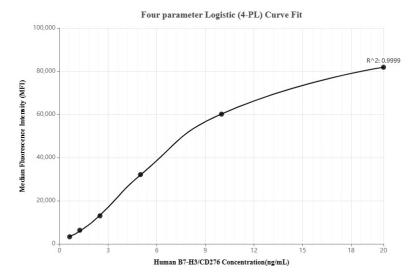
Urine of eight individual healthy human donors was measured. The B7-H3/CD276 concentration of detected samples was determined to be 19.6 ng/mL with a range of 3.0 - 52.0 ng/mL



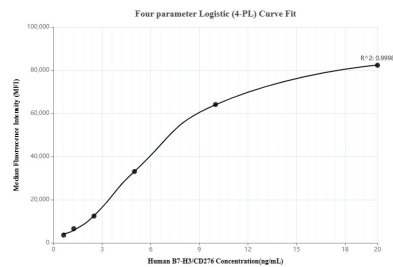
The mean B7-H3/CD276 concentration was determined to be 178.3 ng/mL in A549 cell extract based on a 3.8 mg/mL extract load.



Plasma of sixteen individual healthy human donors was measured. The B7-H3/CD276 concentration of detected samples was determined to be 12.9 ng/mL with a range of 6.4 - 21.2 ng/mL



Cytometric bead array standard curve of MP00248-2, B7-H3/CD276 Recombinant Matched Antibody Pair, PBS Only. Capture antibody: 83152-2-PBS. Detection antibody: 83152-3-PBS. Standard: Eg0075. Range: 0.625-20 ng/mL



Cytometric bead array standard curve of MP00248-3, B7-H3/CD276 Recombinant Matched Antibody Pair, PBS Only. Capture antibody: 83152-2-PBS. Detection antibody: 83152-1-PBS. Standard: Eg0075. Range: 0.625-20 ng/mL