

For Research Use Only

CD276 Recombinant antibody, PBS Only (Detector)

Catalog Number: 83152-1-PBS



Basic Information

Catalog Number: 83152-1-PBS	GenBank Accession Number: NM_001024736	Purification Method: Protein A purification
Size: 100ug , Concentration: 1mg/ml by Nanodrop;	GeneID (NCBI): 80381	CloneNo.: 230305A5
Source: Rabbit	UNIPROT ID: Q5ZPR3	
Isotype: IgG	Full Name: CD276 molecule	
	Calculated MW: 57 kDa	

Applications

Tested Applications:
Cytometric bead array, Sandwich ELISA, Indirect ELISA, Sample test

Species Specificity:
human

Product Information

83152-1-PBS targets CD276 as part of a matched antibody pair:

MP00248-1: 83152-4-PBS capture and 83152-1-PBS detection (validated in Cytometric bead array)

MP00248-3: 83152-2-PBS capture and 83152-1-PBS detection (validated in Cytometric bead array, Sandwich ELISA)

Unconjugated rabbit recombinant monoclonal antibody in PBS only (BSA and azide free) storage buffer at a concentration of 1 mg/mL, ready for conjugation. Created using Proteintech's proprietary in-house recombinant technology. Recombinant production enables unrivalled batch-to-batch consistency, easy scale-up, and future security of supply.

This conjugation ready format makes antibodies ideal for use in many applications including: ELISAs, multiplex assays requiring matched pairs, mass cytometry, and multiplex imaging applications. Antibody use should be optimized by the end user for each application and assay.

Storage

Storage:
Store at -80°C.
Storage Buffer:
PBS Only

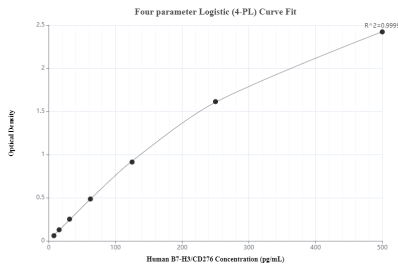
For technical support and original validation data for this product please contact:

T: 1 (888) 4PTGLAB (1-888-478-4522) (toll free in USA), or 1(312) 455-8498 (outside USA)

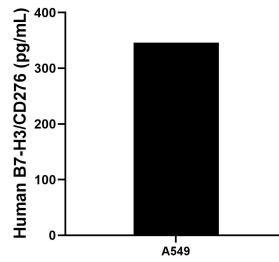
E: proteintech@ptglab.com
W: ptglab.com

This product is exclusively available under Proteintech Group brand and is not available to purchase from any other manufacturer.

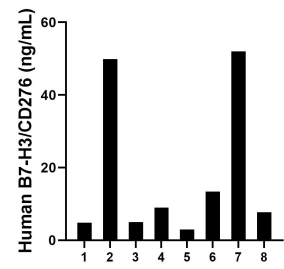
Selected Validation Data



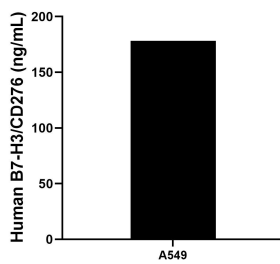
Sandwich ELISA standard curve of MP00248-3, Human B7-H3/CD276 Recombinant Matched Antibody Pair - PBS only. 83152-2-PBS was coated to a plate as the capture antibody and incubated with serial dilutions of standard Eg0075. 83152-1-PBS was HRP conjugated as the detection antibody. Range: 7.8-500 pg/mL



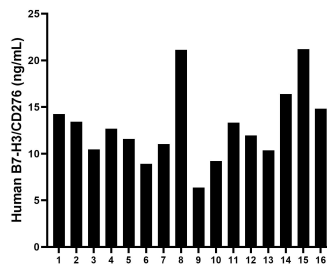
A549 were cultured in DMEM supplemented with 10% fetal bovine serum, 2.5 mM L-glutamine, 100 U/mL penicillin, and 100 µg/mL streptomycin sulfate. An aliquot of the cell culture supernate was removed, assayed for human B7-H3/CD276, and measured 346.1 pg/mL



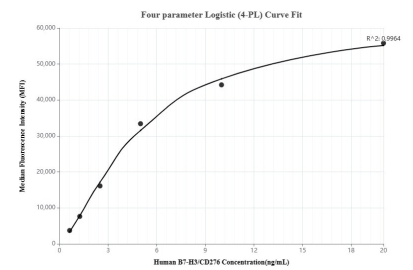
Urine of eight individual healthy human donors was measured. The B7-H3/CD276 concentration of detected samples was determined to be 19.6 ng/mL with a range of 3.0 - 52.0 ng/mL



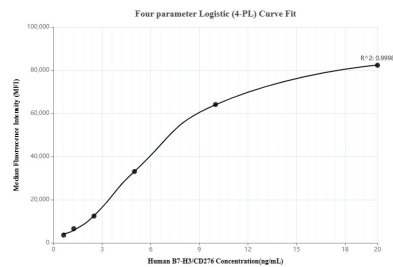
The mean B7-H3/CD276 concentration was determined to be 178.3 ng/mL in A549 cell extract based on a 3.8 mg/mL extract load.



Plasma of sixteen individual healthy human donors was measured. The B7-H3/CD276 concentration of detected samples was determined to be 12.9 ng/mL with a range of 6.4 - 21.2 ng/mL



Cytometric bead array standard curve of MP00248-1, B7-H3/CD276 Recombinant Matched Antibody Pair, PBS Only. Capture antibody: 83152-4-PBS. Detection antibody: 83152-1-PBS. Standard: Eg0075. Range: 0.625-20 ng/mL



Cytometric bead array standard curve of MP00248-3, B7-H3/CD276 Recombinant Matched Antibody Pair, PBS Only. Capture antibody: 83152-2-PBS. Detection antibody: 83152-1-PBS. Standard: Eg0075. Range: 0.625-20 ng/mL