

For Research Use Only

TIMP1 Recombinant antibody

Catalog Number: 83151-5-RR



Basic Information

Catalog Number: 83151-5-RR	GenBank Accession Number: BC000866	Purification Method: Protein A purification
Size: 100ul , Concentration: 1000 ug/ml by Nanodrop;	GeneID (NCBI): 7076	CloneNo.: 230329E7
Source: Rabbit	UNIPROT ID: P01033	Recommended Dilutions: IF/ICC 1:125-1:500
Isotype: IgG	Full Name: TIMP metalloproteinase inhibitor 1	
	Calculated MW: 23 kDa	

Applications

Tested Applications: IF/ICC, FC (Intra), ELISA	Positive Controls: IF/ICC : HeLa cells,
Species Specificity: human	

Background Information

TIMP1 is a member of the family of matrix metalloproteinase inhibitors, which contains four members (TIMP1, TIMP2, TIMP3, and TIMP4). Tissue inhibitors of metalloproteinases (TIMPs) are multifaceted molecules that exhibit properties beyond their classical proteinase inhibitory function. TIMP1 has several MMP-independent functions such as modulation of angiogenesis, promotion of cell proliferation, and inhibition of apoptosis. TIMP1 plays important role in cell cycle regulation and cancer progression. Recently, clinical studies have shown that the aberrant expression of TIMP1 is associated with an unfavorable prognosis in a series of tumors, such as gastric cancer, papillary thyroid carcinoma, cutaneous melanoma and breast cancer. In pregnancy, TIMP1 plays a regulatory role in the process of implantation, particularly the cytotrophoblast invasion of the uterine endometrium. In pregnancy, TIMP1 plays a regulatory role in the process of implantation, particularly the cytotrophoblast invasion of the uterine endometrium.

Storage

Storage:
Store at -20°C. Stable for one year after shipment.
Storage Buffer:
PBS with 0.02% sodium azide and 50% glycerol pH 7.3.
Aliquoting is unnecessary for -20°C storage

*** 20ul sizes contain 0.1% BSA

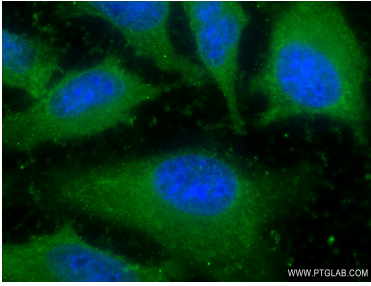
For technical support and original validation data for this product please contact:

T: 1 (888) 4PTGLAB (1-888-478-4522) (toll free in USA), or 1(312) 455-8498 (outside USA)

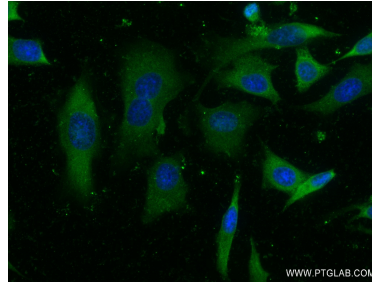
E: proteintech@ptglab.com
W: ptglab.com

This product is exclusively available under Proteintech Group brand and is not available to purchase from any other manufacturer.

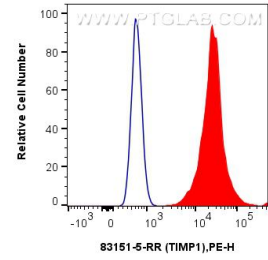
Selected Validation Data



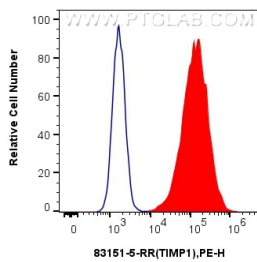
Immunofluorescent analysis of (-20°C Ethanol) fixed HeLa cells using TIMP1 antibody (83151-5-RR, Clone: 230329E7) at dilution of 1:250 and CoraLite®488-Conjugated AffiniPure Goat Anti-Mouse IgG(H+L) (SA00013-1).



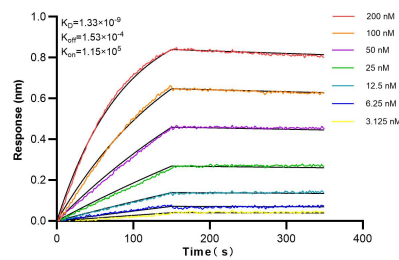
Immunofluorescent analysis of (-20°C Ethanol) fixed HeLa cells using TIMP1 antibody (83151-5-RR, Clone: 230329E7) at dilution of 1:250 and CoraLite®488-Conjugated AffiniPure Goat Anti-Mouse IgG(H+L) (SA00013-1).



1×10^6 HT-29 cells were intracellularly stained with 0.25 μ g TIMP1 Recombinant antibody (83151-5-RR, Clone:230329E7) and PE-Conjugated AffiniPure Goat Anti-Rabbit IgG(H+L)(red), or 0.25 μ g Isotype Control (blue). Cells were fixed with 4% PFA and permeabilized with Flow Cytometry Perm Buffer (PF00011-C).



1×10^6 MDA-MB-231 cells were intracellularly stained with 0.25 μ g TIMP1 Recombinant antibody (83151-5-RR, Clone:230329E7) and PE-Conjugated AffiniPure Goat Anti-Rabbit IgG(H+L)(red), or 0.25 μ g Isotype Control (blue). Cells were fixed with 4% PFA and permeabilized with Flow Cytometry Perm Buffer (PF00011-C).



Biolayer interferometry (BLI) kinetic assays of 83151-5-RR against Human TIMP1 were performed. The affinity constant is 1.33 nM.